

TOYOTA Yaris Cross 2021

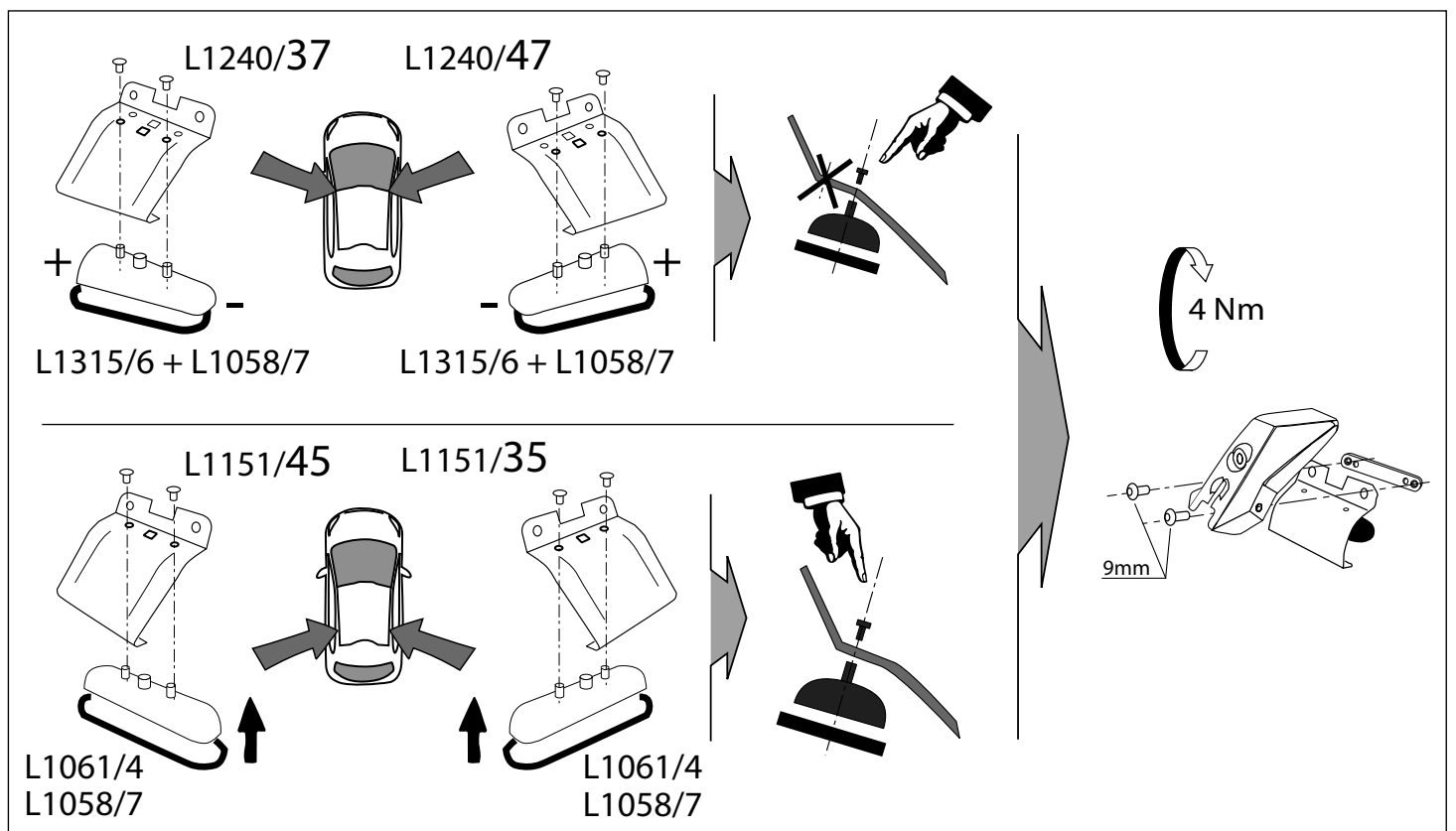
MOCSKT 0453

MOCSRR0AC010 cm 110

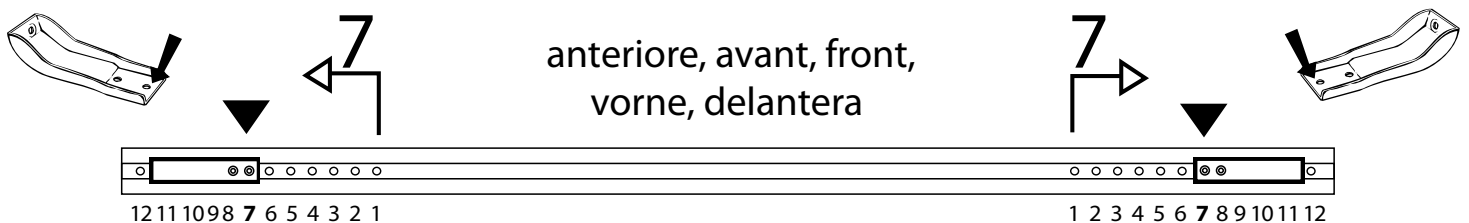
MOCSRR0AL006 cm 110

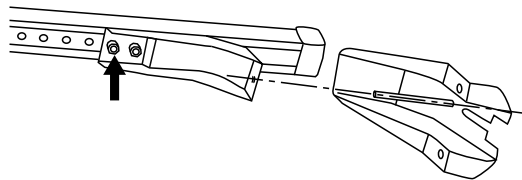
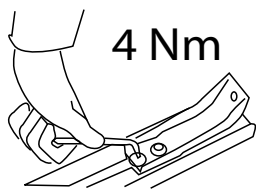


<p>1 - L1240/37 ant. sx</p> <p>1 - L1240/47 ant. dx</p> <p>2 - L1315/6</p>	<p>1 - L1151/35 post. dx</p> <p>1 - L1151/45 post. sx</p> <p>2 - L1061/4</p>	<p>4 - L1058/7</p> <p>4 - RC20200026</p>	<p>8 - RCVM6X9Q</p> <p>1 - RCBR5</p>
--	--	--	--------------------------------------

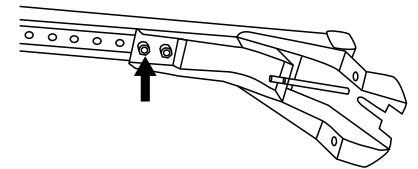


MOCSRR0AC010 cm 110
MOCSRR0AL006 cm 110

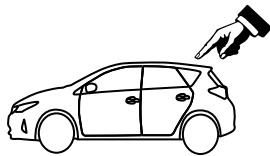




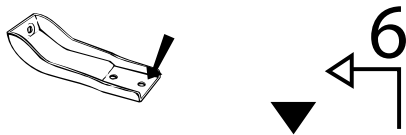
MOCSKT 0453



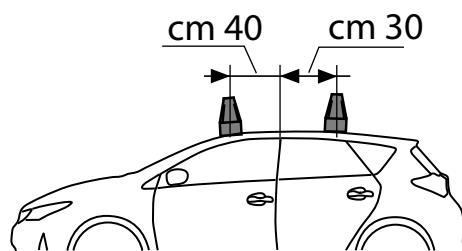
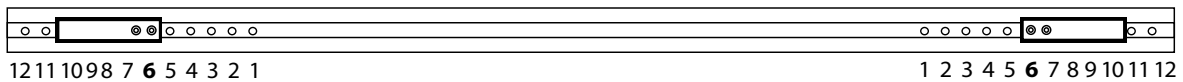
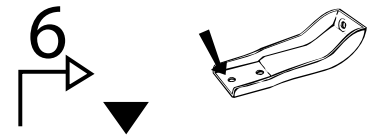
!!!



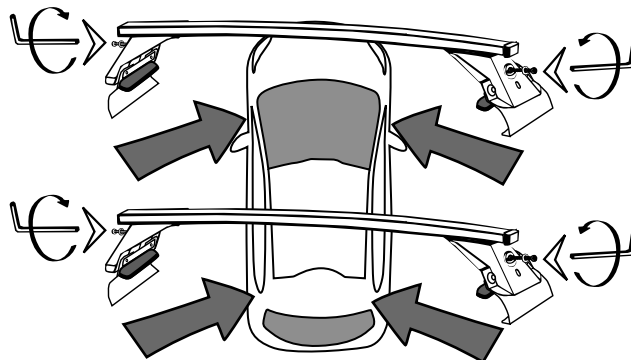
MOCSRROAC010 cm 110
MOCSRROAL006 cm 110



posteriore, arriere,
rear, hinten, trasera



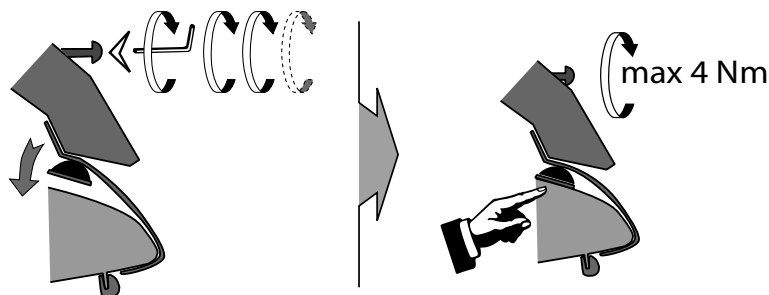
L1240/37 +
L1315/6



L1240/47 +
L1315/6

L1151/45 +
L1061/4

L1151/35 +
L1061/4



I - Per stringere, usare la chiave come indicato nel disegno. (Non si assumono responsabilità per danni causati dall'impiego di chiavi diverse da quella in dotazione al prodotto).

F - Pour serrer, utiliser la clé comme indique ci dessous.

GB - To tighten please use the wrench as per the drawing.

D - Zum Anziehen benutzen Sie bitte den Inbusschlüssel, nur wie auf dem Bild dargestellt.

E - Para el correcto ajuste, utilizar la llave fija tal y como se indica en la imagen

