

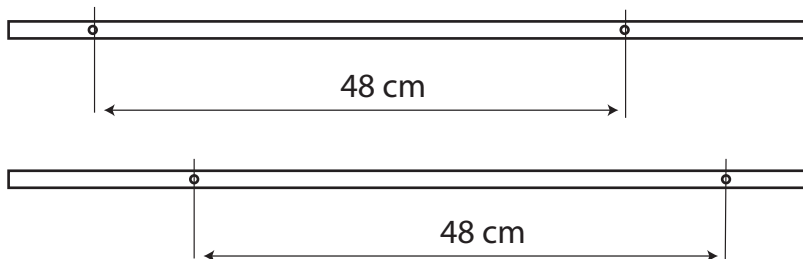
DR DR5 Evo 2017 (non per DR5 2007)

MOSKOT 0416

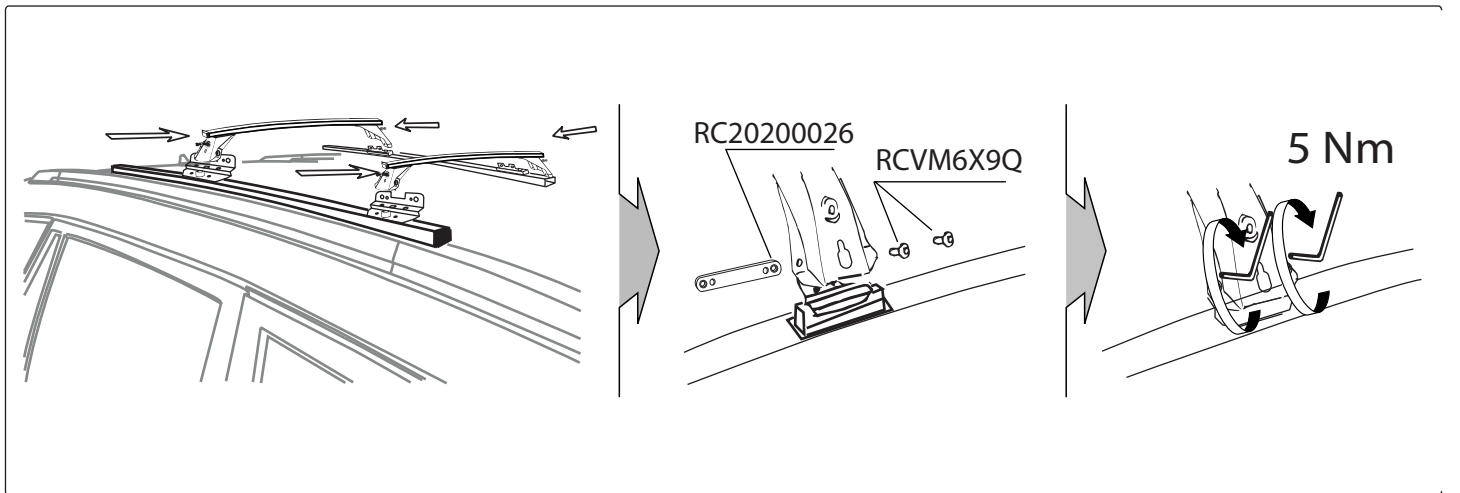
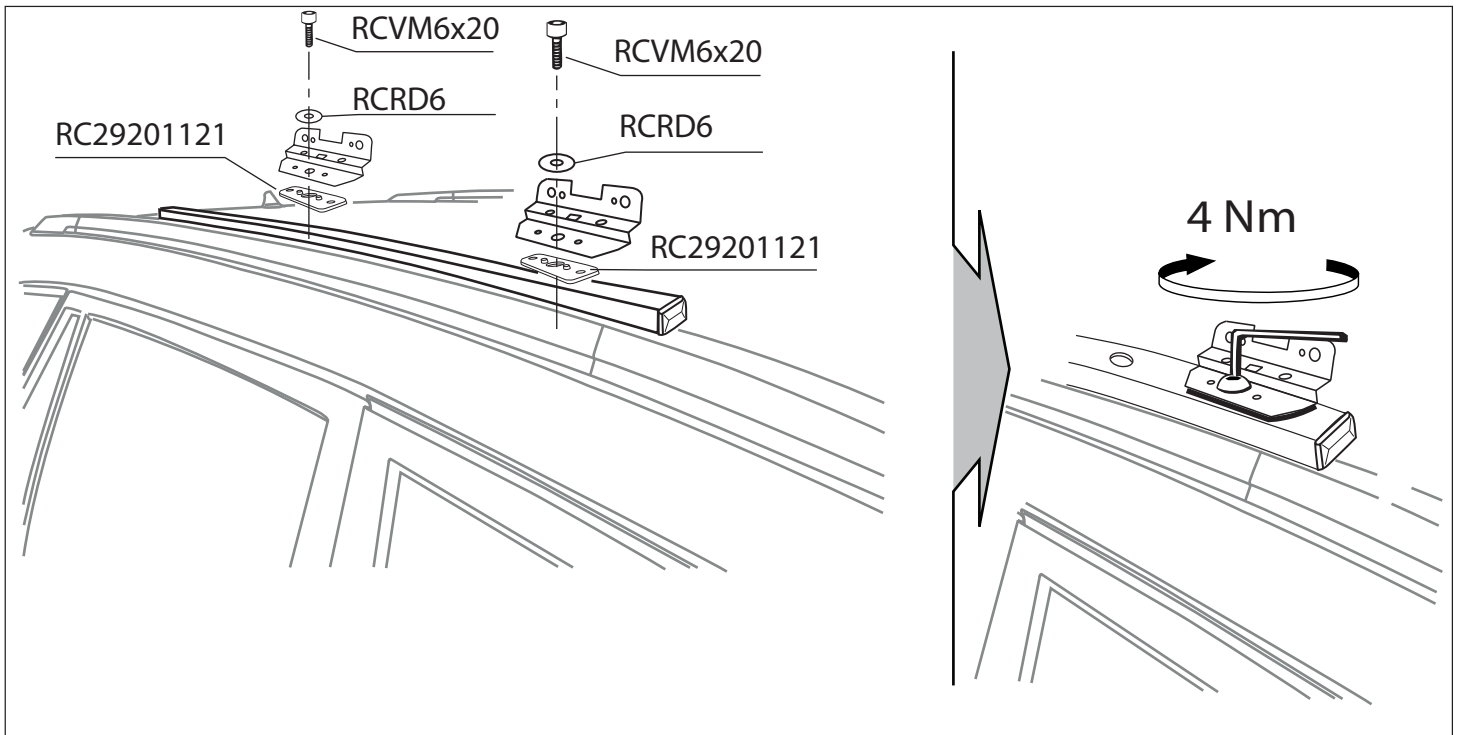


MOSKRR0AL0008 cm 110 MOSKRR0AC0012 cm 110

4 - L1055		
8 - RCVM6X9Q		
4 - RCVM6X50Q		
4 - RCVM6X20Q		
4 - RCRD6Q		
4 - RC20200026		
1 - RCBR5 normale		
2 - RC1540/2E		
4 - RC29201121		



MOCSKT 0416



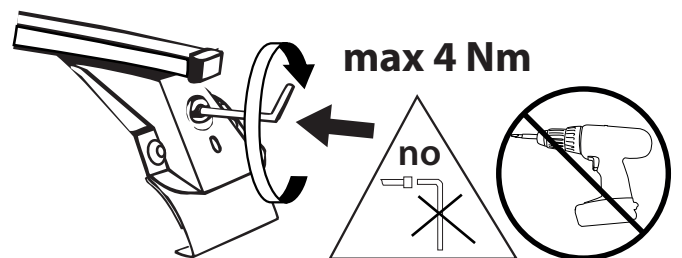
I - Per stringere, usare la chiave come indicato nel disegno. (Non si assumono responsabilità per danni causati dall'impiego di chiavi diverse da quella in dotazione al prodotto).

F - Pour serrer, utiliser la clé comme indiqué ci dessous.

GB - To tighten please use the wrench as per the drawing.

D - Zum Anziehen benutzen Sie bitte den Inbusschlüssel, nur wie auf dem Bild dargestellt.

E - Para el correcto ajuste, utilizar la llave fija tal y como se indica en la imagen



MODULA
case system

email: modulacs@modulacs.com
web site: www.modulacs.com

Modula s.r.l.
Loc. Penisola, 20/A
61026 Piandimeleto (PU) ITALY
phone +39 0722/700070
fax +39 0722/720017

14-01-2020