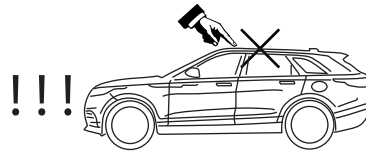


LAND ROVER Range Rover Velar MOC SKT 0401

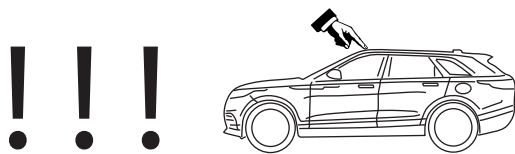
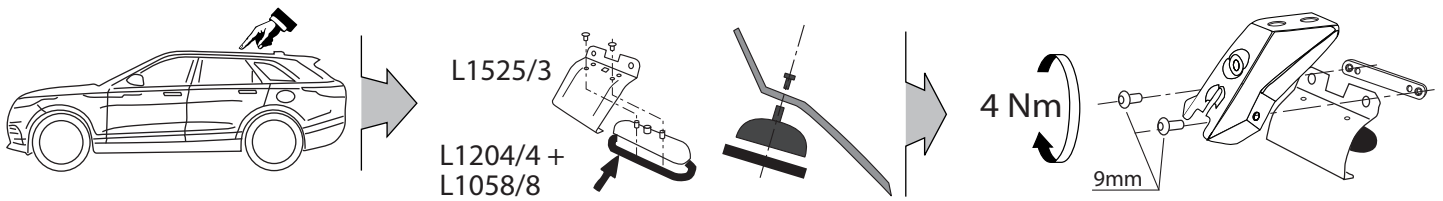
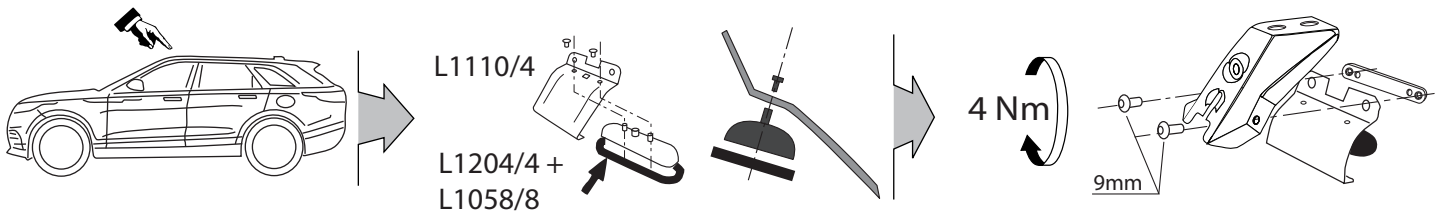
model 2017 - no rails



MOC SRR0AC0011 cm 124

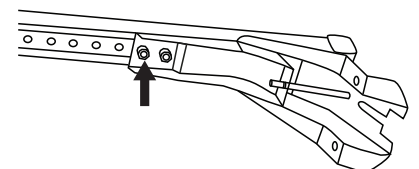
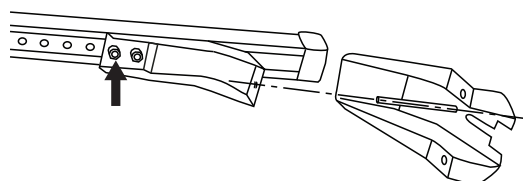
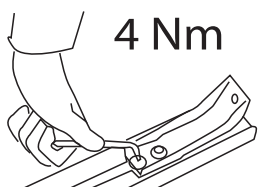
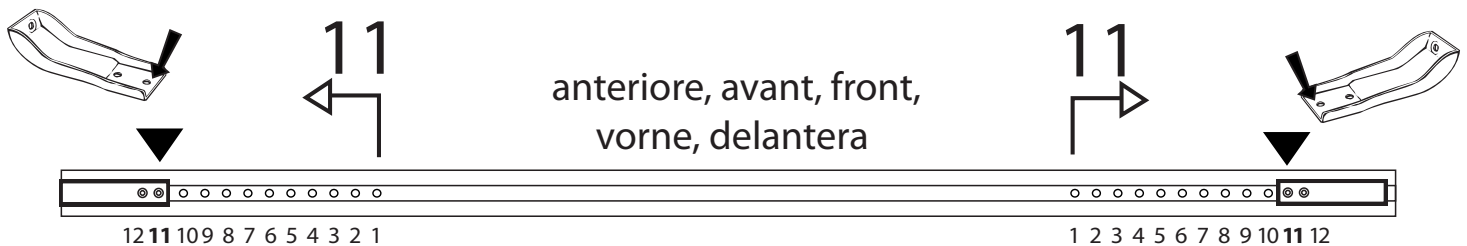
MOC SRR0AL0007 cm 124

2 - L1110/4 ant		4 - L1204/4		8 - RCVM6X9Q	
2 - L1525/3 post		4 - L1058/8		4 - RC20200026	
				1 - RCBR5	



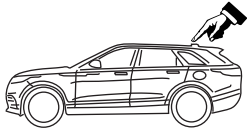
MOC SRR0AC0011 cm 124

MOC SRR0AL0007 cm 124

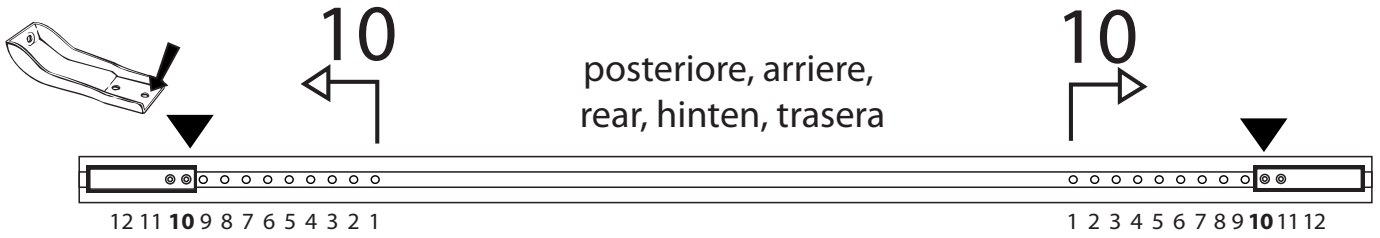


MOCSKT 0401

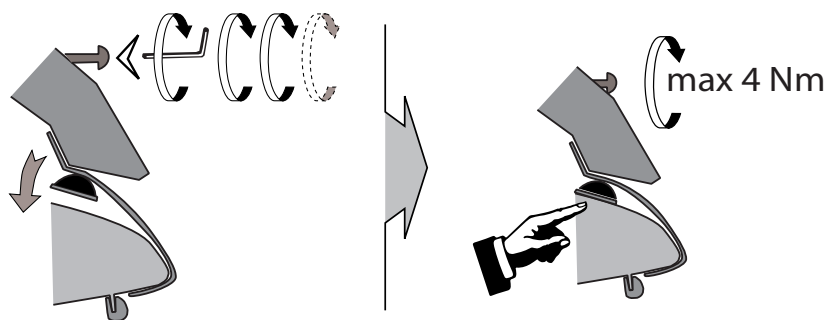
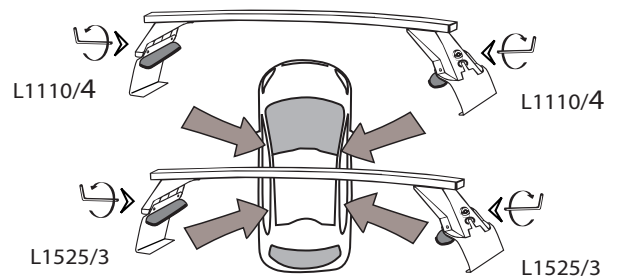
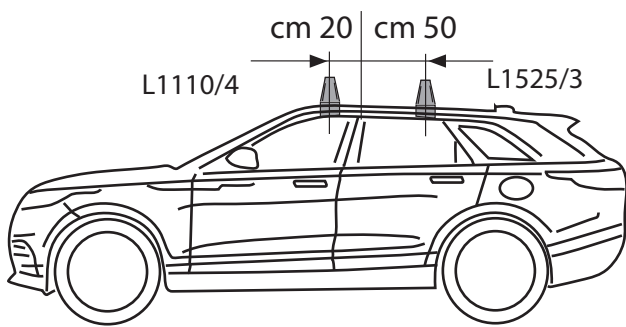
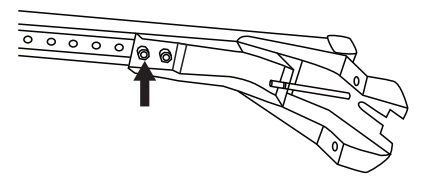
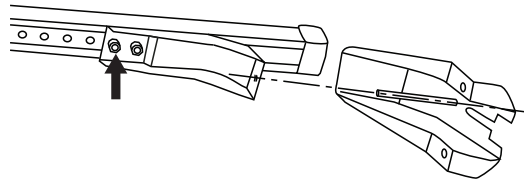
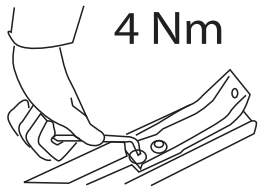
!!!



MOCSRR0AC0011 cm 124
MOCSRR0AL0007 cm 124



posteriore, arriere,
 rear, hinten, trasera



I - Per stringere, usare la chiave come indicato nel disegno. (Non si assumono responsabilità per danni causati dall'impiego di chiavi diverse da quella in dotazione al prodotto).

F - Pour serrer, utiliser la clé comme indique ci dessous.

GB - To tighten please use the wrench as per the drawing.

D - Zum Anziehen benutzen Sie bitte den Inbusschlüssel, nur wie auf dem Bild dargestellt.

E - Para el correcto ajuste, utilizar la llave fija tal y como se indica en la imagen

