

# MAZDA 3 2018

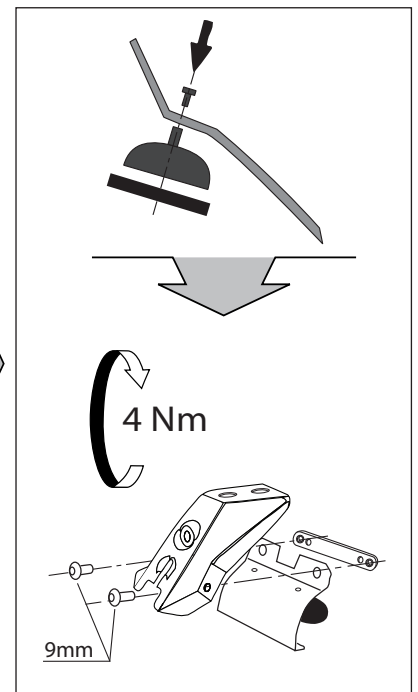
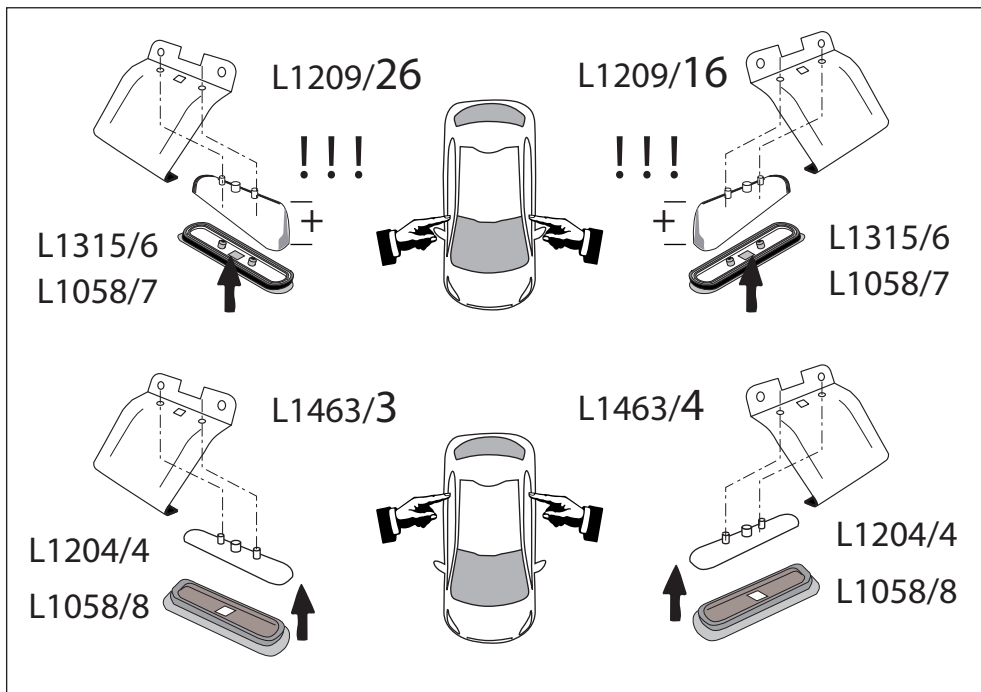
# MOCSKT 0399

**MOCSRR0AC0011 cm 124**

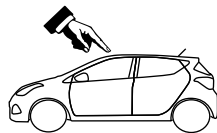
**MOCSRR0AL0007 cm 124**



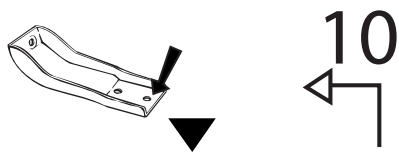
1 - L1209/16 ant. sx 	1 - L1463/3 post. dx 	2 - L1315/6 	2 - L1058/7 	2 - L1204/4 	2 - L1058/8 	8 - RCVM6X9Q 	4 - RC20200026 	1 - RCBR5 
1 - L1209/26 ant. dx 	1 - L1463/4 post. sx 	2 - L1315/6 	2 - L1058/7 	2 - L1204/4 	2 - L1058/8 	8 - RCVM6X9Q 	4 - RC20200026 	1 - RCBR5 



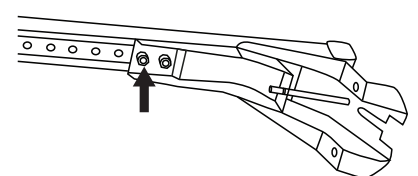
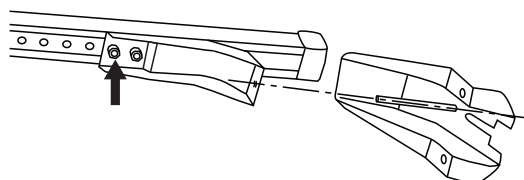
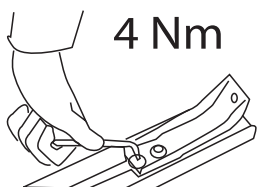
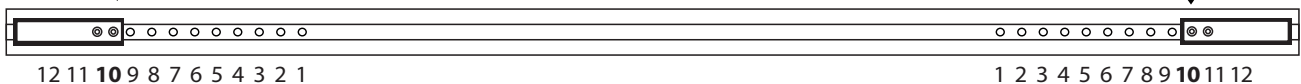
!!!



**MOCSRR0AC0011 cm 124**  
**MOCSRR0AL0007 cm 124**



anteriore, avant, front,  
vorne, delantera

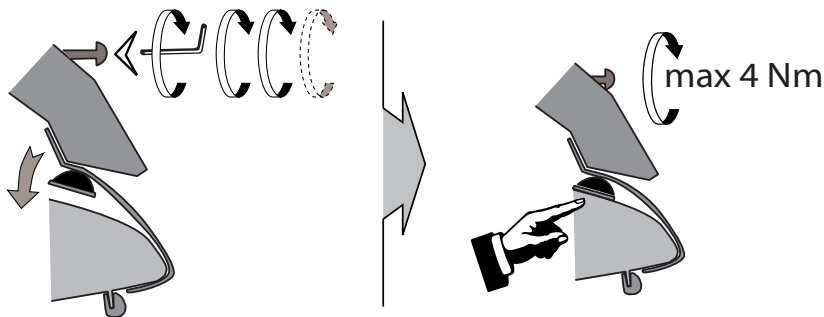
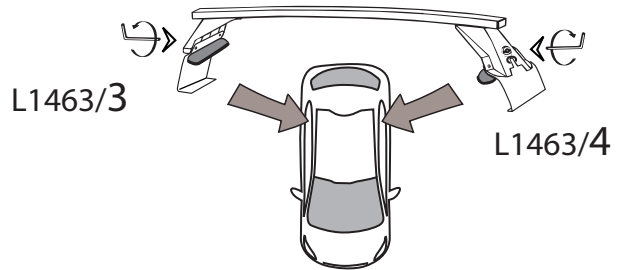
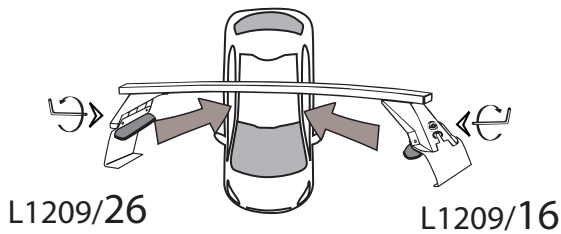
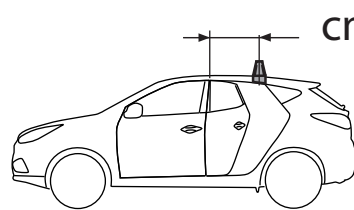
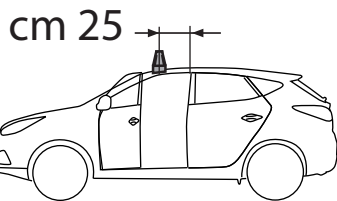
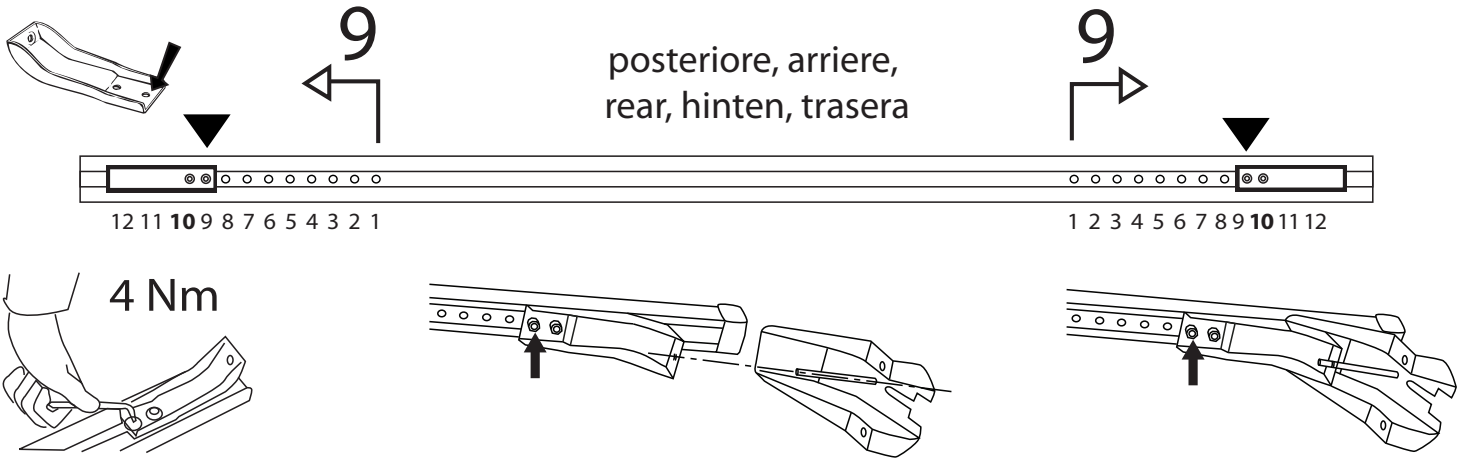


# MOCSKT 0399

!!!



**MOCSRR0AC0011 cm 124**  
**MOCSRR0AL0007 cm 124**



I - Per stringere, usare la chiave come indicato nel disegno. (Non si assumono responsabilità per danni causati dall'impiego di chiavi diverse da quella in dotazione al prodotto).

F - Pour serrer, utiliser la clé comme indique ci dessous.

GB - To tighten please use the wrench as per the drawing.

D - Zum Anziehen benutzen Sie bitte den Inbusschlüssel, nur wie auf dem Bild dargestellt.

E - Para el correcto ajuste, utilizar la llave fija tal y como se indica en la imagen

