


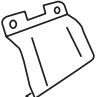

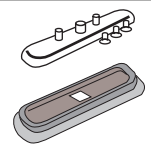
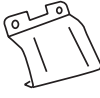
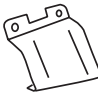

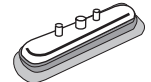


# FORD Mondeo SW no rails

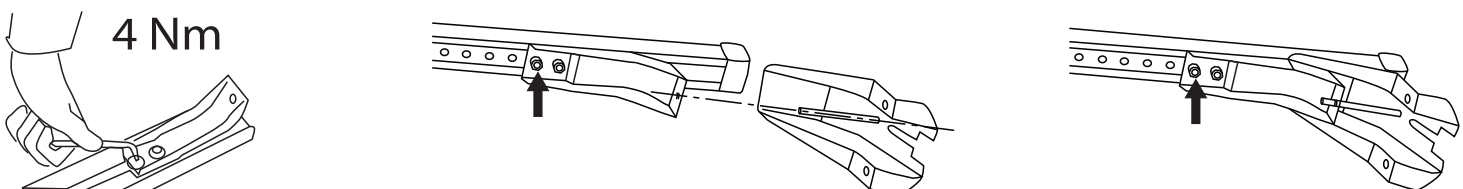
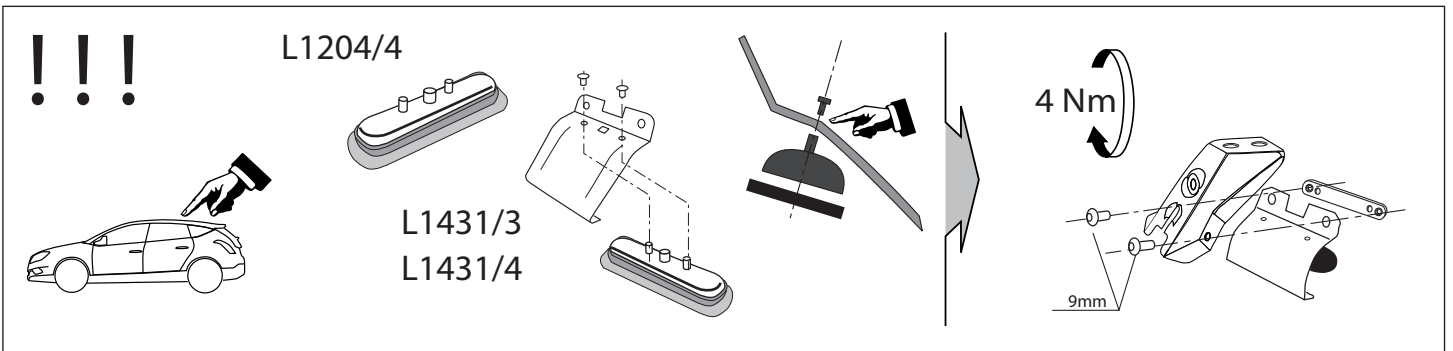
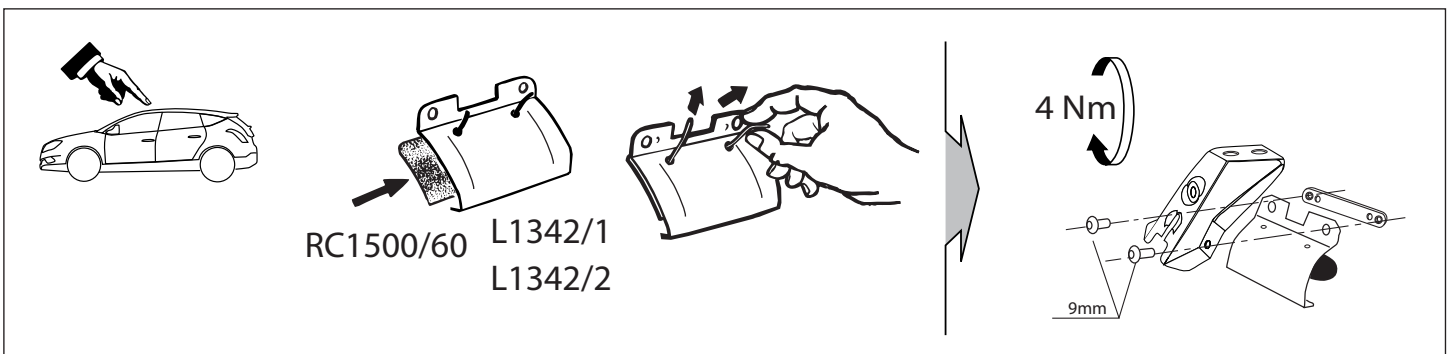
model 2015

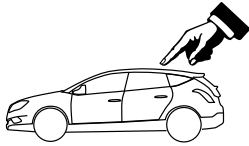
**MOCSKT 335**



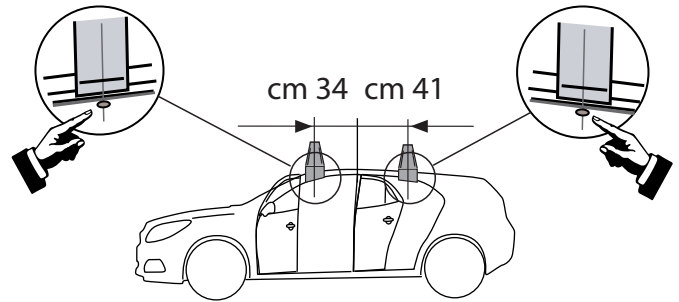
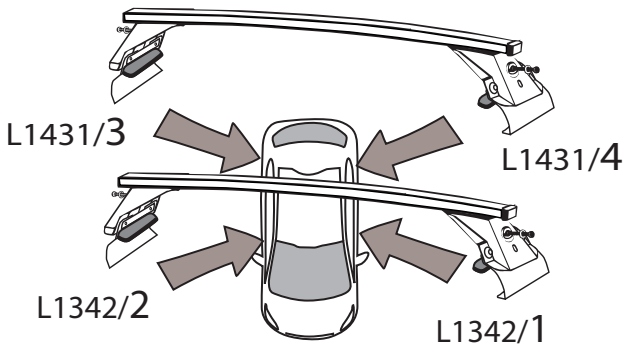
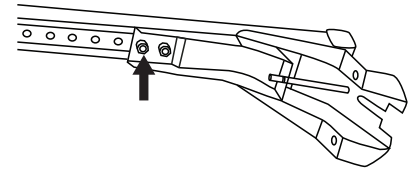
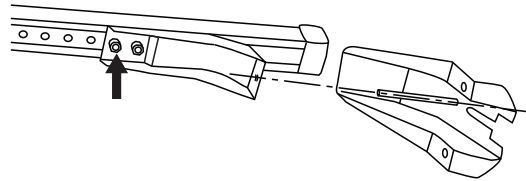
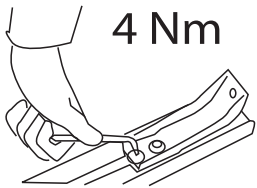
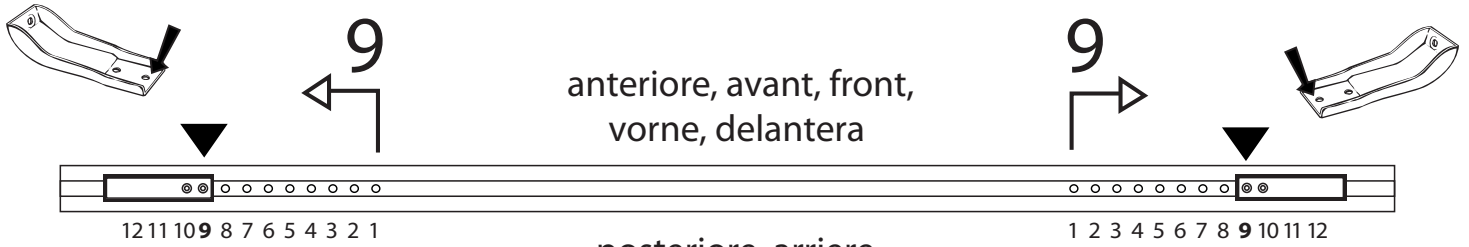
**MOCSRR0AC011 cm 124**  
**MOCSRR0AL007 cm 124**

<p>1 - L1342/1 ant. sx.</p> 	<p>1 - L1431/3 post. dx</p> 	<p>2 - RC1500/60</p> 	<p>2 - L1204/4</p> 
<p>1 - L1342/2 ant. dx</p> 	<p>1 - L1431/4 post. sx</p> 	<p>4 - RC20200026</p> 	<p>2 - L1058/8</p> 
		<p>8 - RCVM6X9Q</p> 	
		<p>1 - RCBR5</p> 	

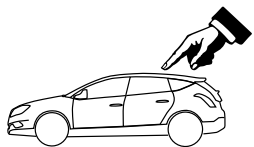
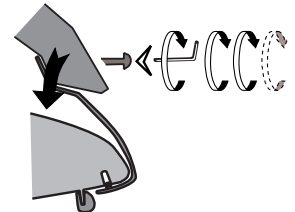
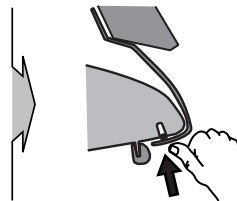
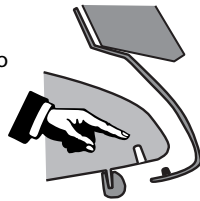




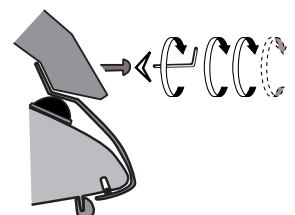
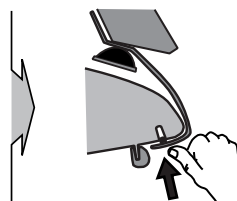
## MOCSRR0AC011 cm 124 MOCSRR0AL007 cm 124



I-sez. tetto vettura  
GB-roof section  
E-seccion del techo



I-sez. tetto vettura  
GB-roof section  
E-seccion del techo



I - Per stringere, usare la chiave come indicato nel disegno. (Non si assumono responsabilità per danni causati dall'impiego di chiavi diverse da quella in dotazione al prodotto).  
F - Pour serrer, utiliser la clé comme indiqué ci dessous.

GB - To tighten please use the wrench as per the drawing.

D - Zum Anziehen benutzen Sie bitte den Inbusschlüssel, nur wie auf dem Bild dargestellt.

E - Para el correcto ajuste, utilizar la llave fija tal y como se indica en la imagen

