

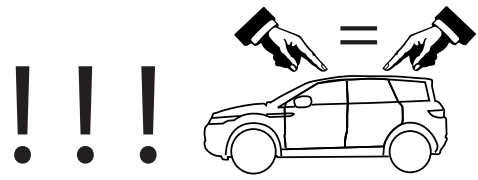
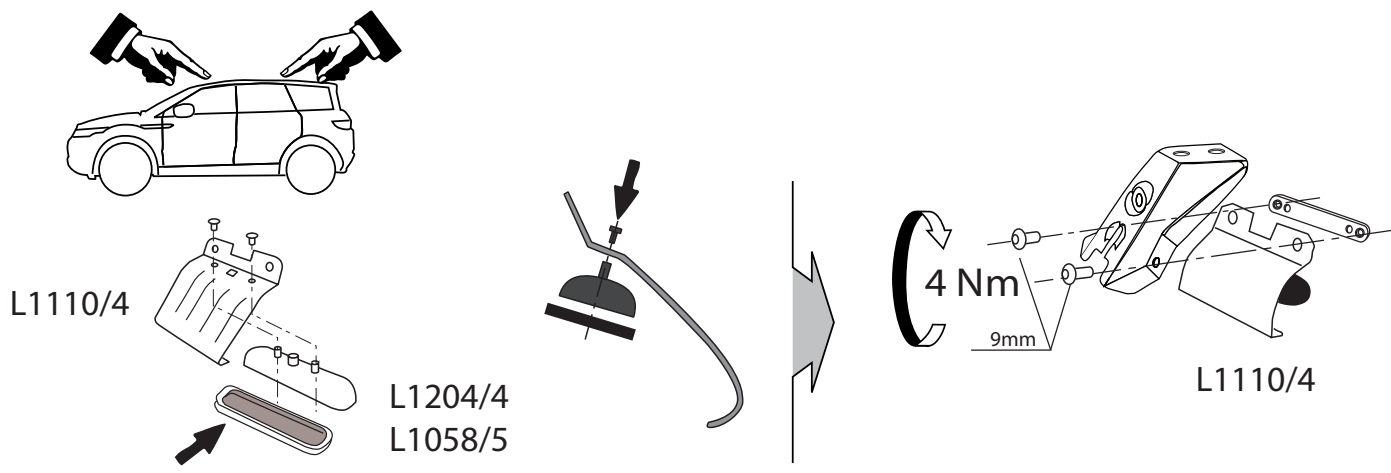
# LAND ROVER Range Rover Sport model 2013

**MOC SKT 324**

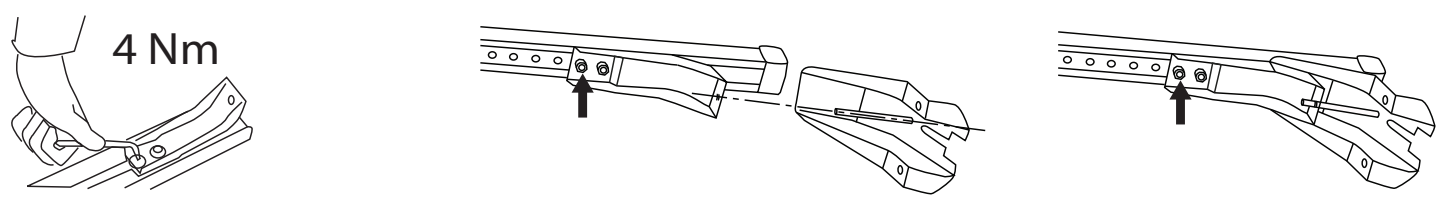
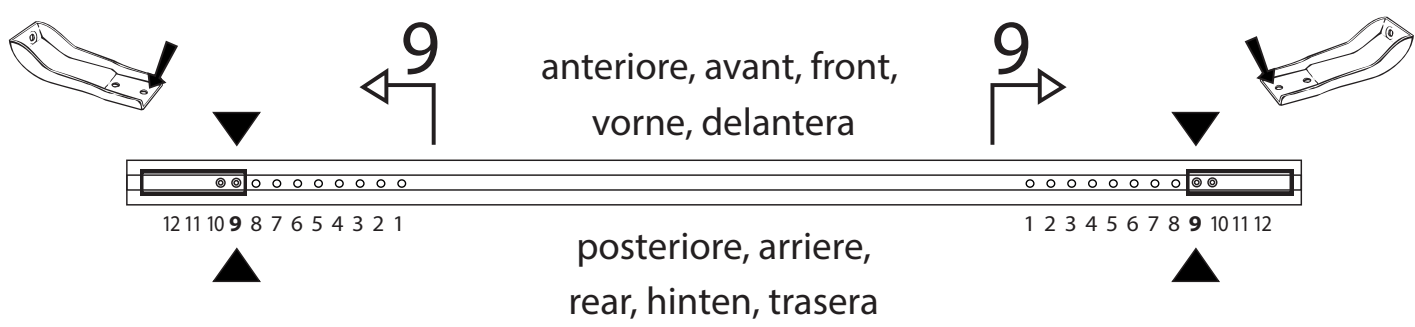


## MOC SRR0AL010 cm 142

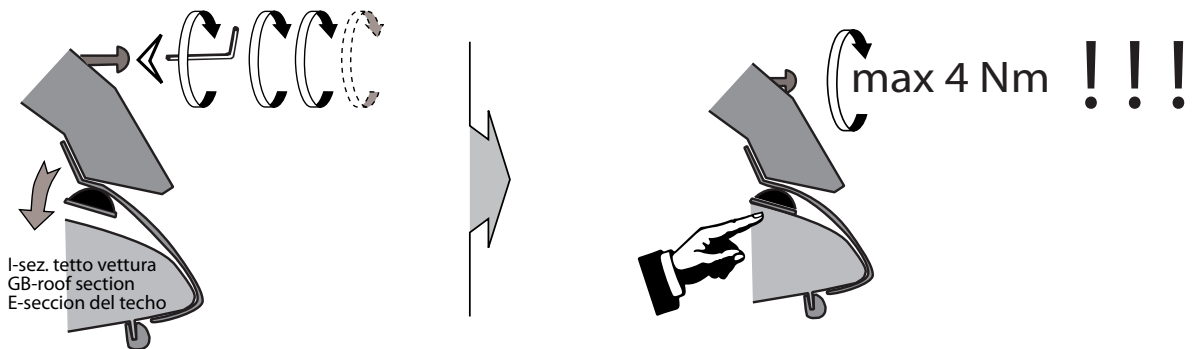
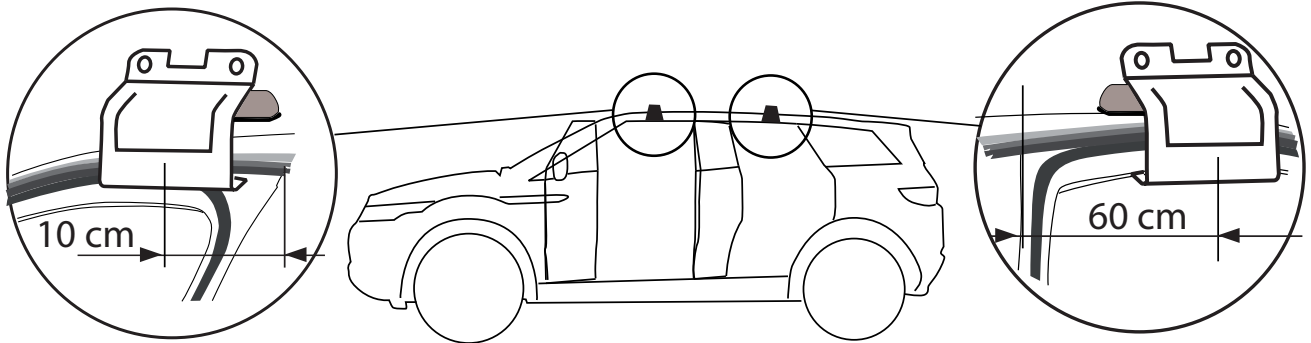
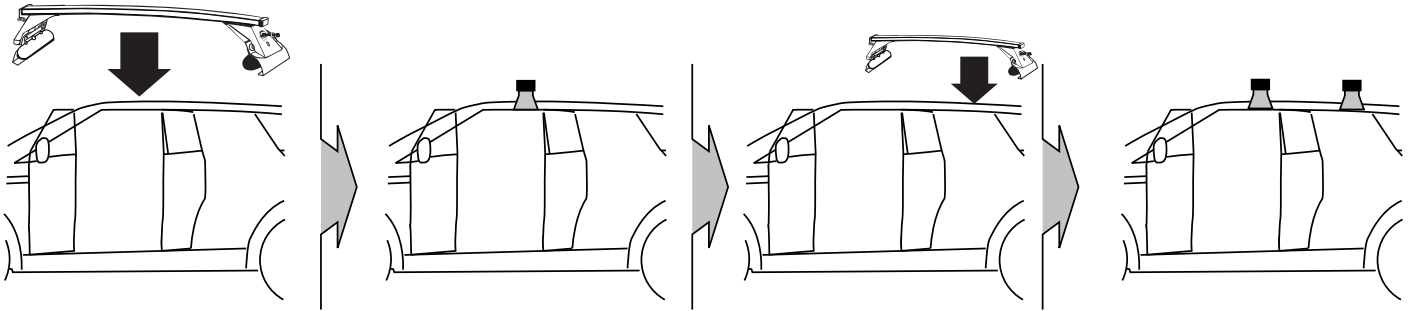
4 - L1110/4		4 - L1058/5		4 - RC20200026	
4 - L1204/4		8 - RCVM6X9Q		1 - RCBR5	



## MOC SRR0AL010 cm 142



# MOCSKT 324



I - Per stringere, usare la chiave come indicato nel disegno. (Non si assumono responsabilità per danni causati dall'impiego di chiavi diverse da quella in dotazione al prodotto).  
F - Pour serrer, utiliser la clé comme indique ci dessous.

GB - For tightening, please use the wrench as per the drawing.  
D - Zum Anziehen benutzen Sie bitte den Inbusschlüssel, nur wie auf dem Bild dargestellt.  
E - Para el correcto ajuste, utilizar la llave fija tal y como se indica en la imagen

