

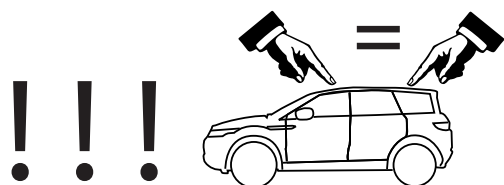
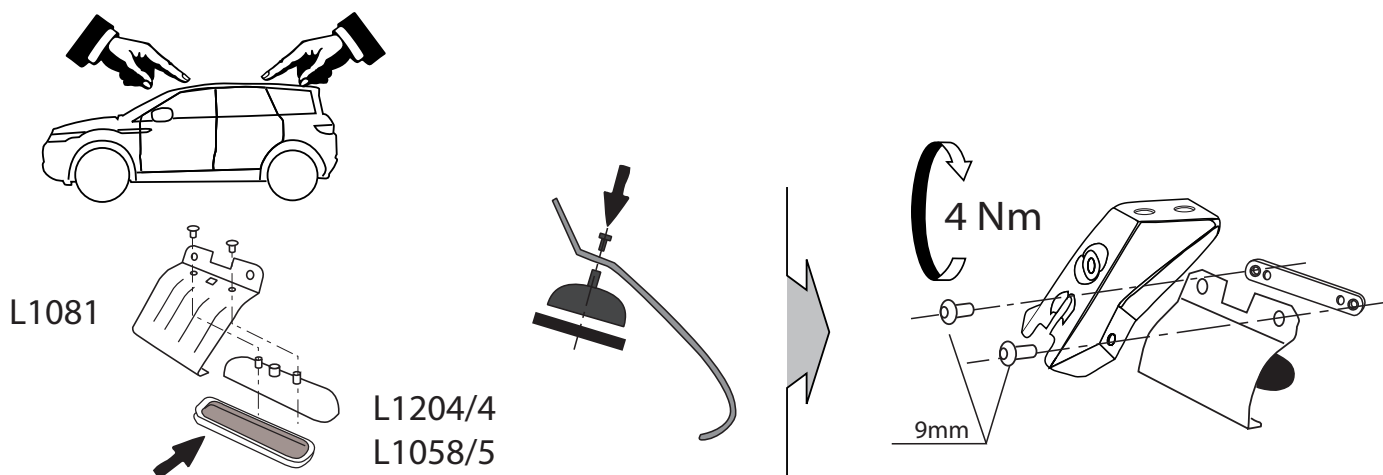
LAND ROVER Range Rover model 2012

MOCSKT 323

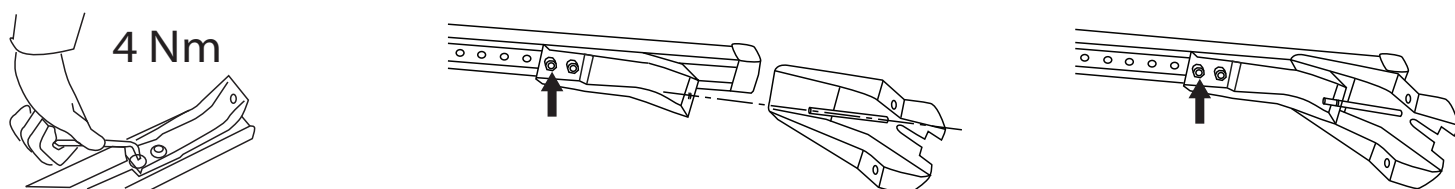
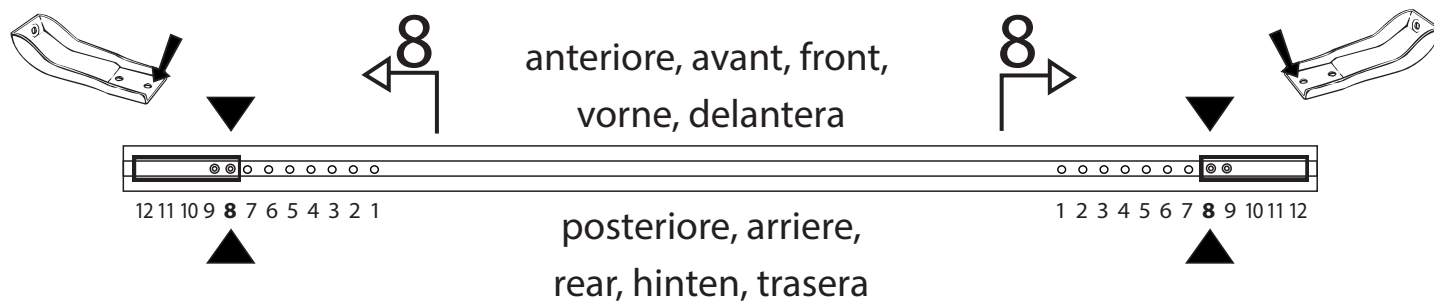


MOCSRROAL010 cm 142

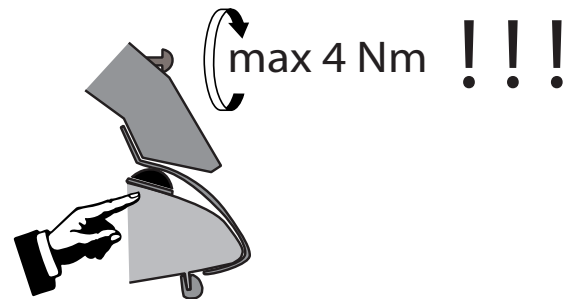
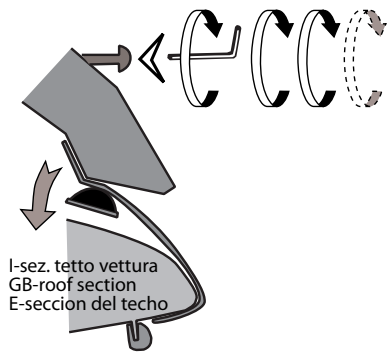
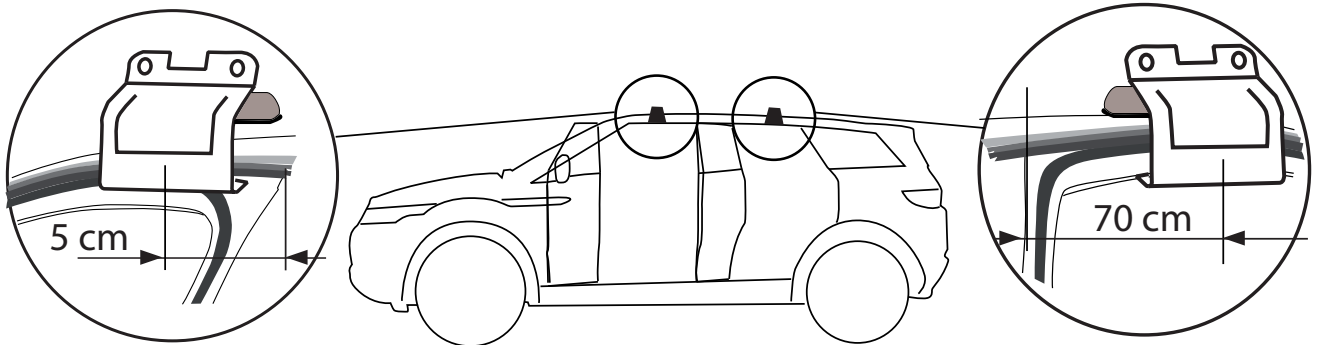
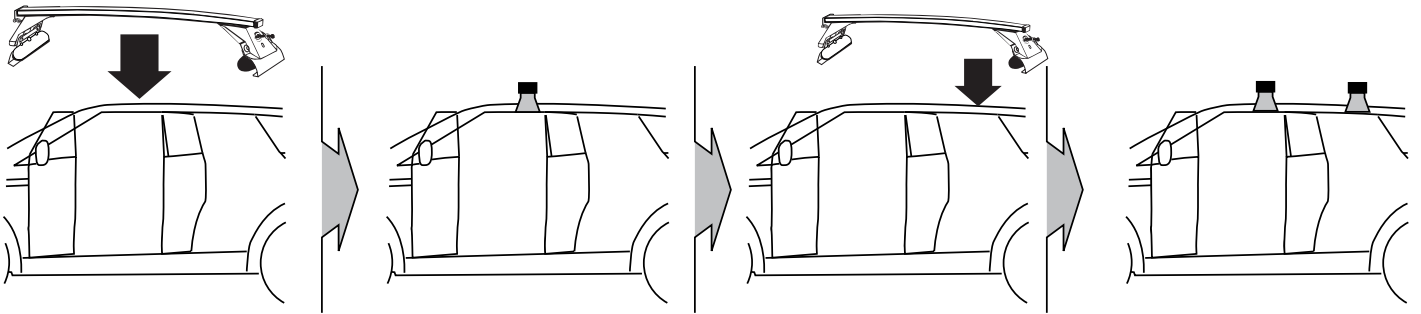
4 - L1081		4 - L1058/5		4 - RC20200026	
4 - L1204/4		8 - RCVM6X9Q		1 - RCBR5	



MOCSRROAL010 cm 142



MOCSKT 323



I - Per stringere, usare la chiave come indicato nel disegno. (Non si assumono responsabilità per danni causati dall'impiego di chiavi diverse da quella in dotazione al prodotto).
F - Pour serrer, utiliser la clé comme indique ci dessous.

GB - For tightening, please use the wrench as per the drawing.
D - Zum Anziehen benutzen Sie bitte den Inbusschlüssel, nur wie auf dem Bild dargestellt.
E - Para el correcto ajuste, utilizar la llave fija tal y como se indica en la imagen

