

MOC SKT 308

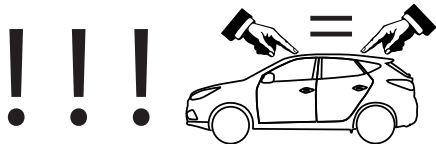
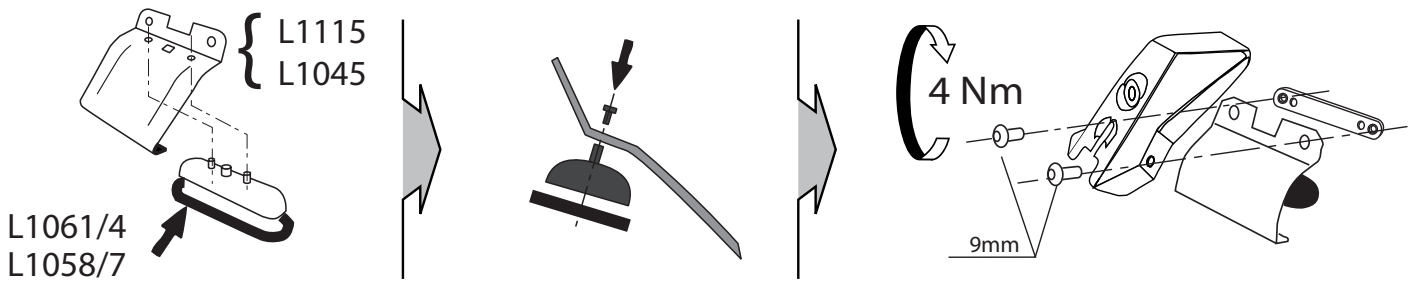
HONDA HR-V 2015 no rails

MOC SRR0AC011 cm 124

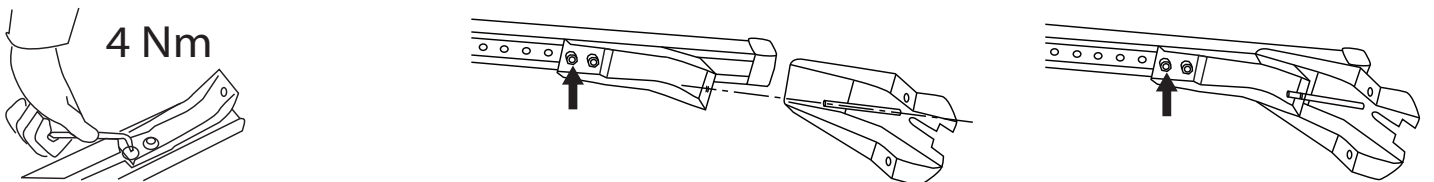
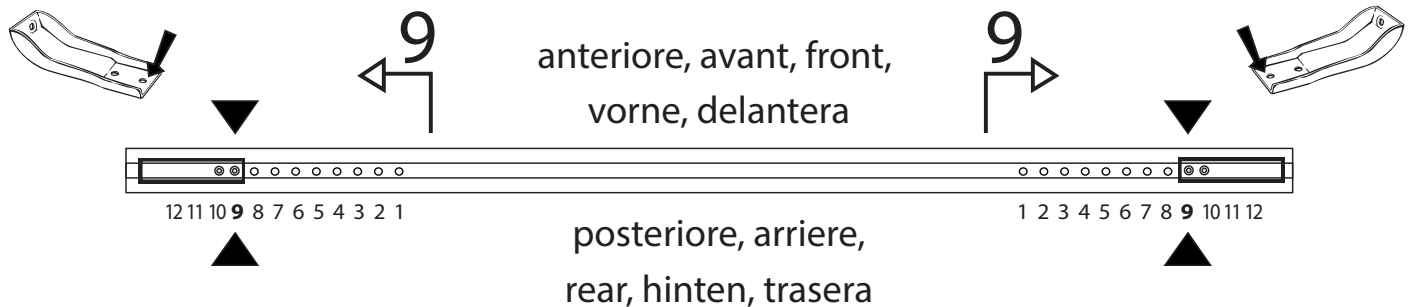
MOC SRR0AL007 cm 124



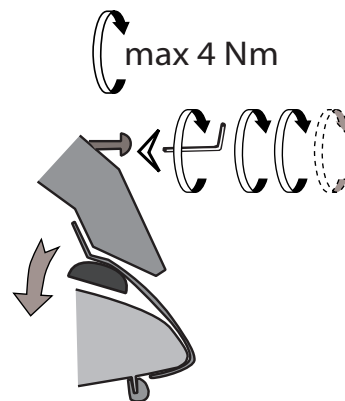
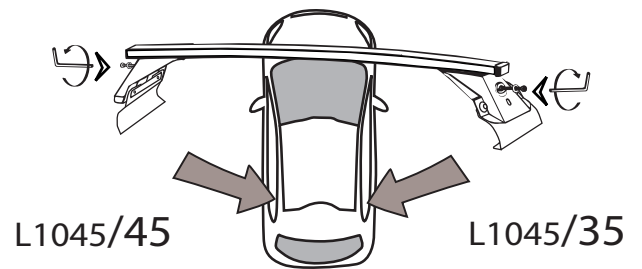
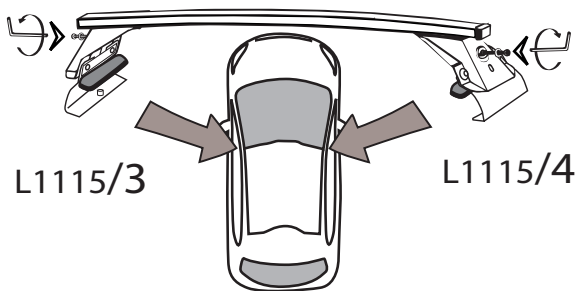
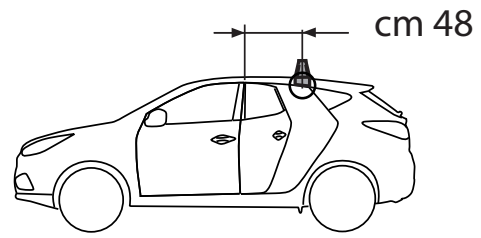
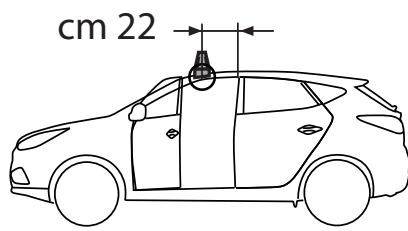
1 - L1115/3 ant. sx		1 - L1045/35 post. dx		4 - L1061/4		8 - RCVM6X9Q	
1 - L1115/4 ant. dx		1 - L1045/45 post. sx		4 - L1058/7		4 - RC20200026	
						1 - RCBR5	



MOC SRR0AC011 cm 124
MOC SRR0AL007 cm 124



MOCSKT 308



I - Per stringere, usare la chiave come indicato nel disegno. (Non si assumono responsabilità per danni causati dall'impiego di chiavi diverse da quella in dotazione al prodotto).
F - Pour serrer, utiliser la clé comme indique ci dessus.

GB - To tighten please use the wrench as per the drawing.
D - Zum Anziehen benutzen Sie bitte den Inbusschlüssel, nur wie auf dem Bild dargestellt.
E - Para el correcto ajuste, utilizar la llave fija tal y como se indica en la imagen

