





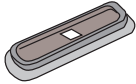


FIAT 500X no rails 2014

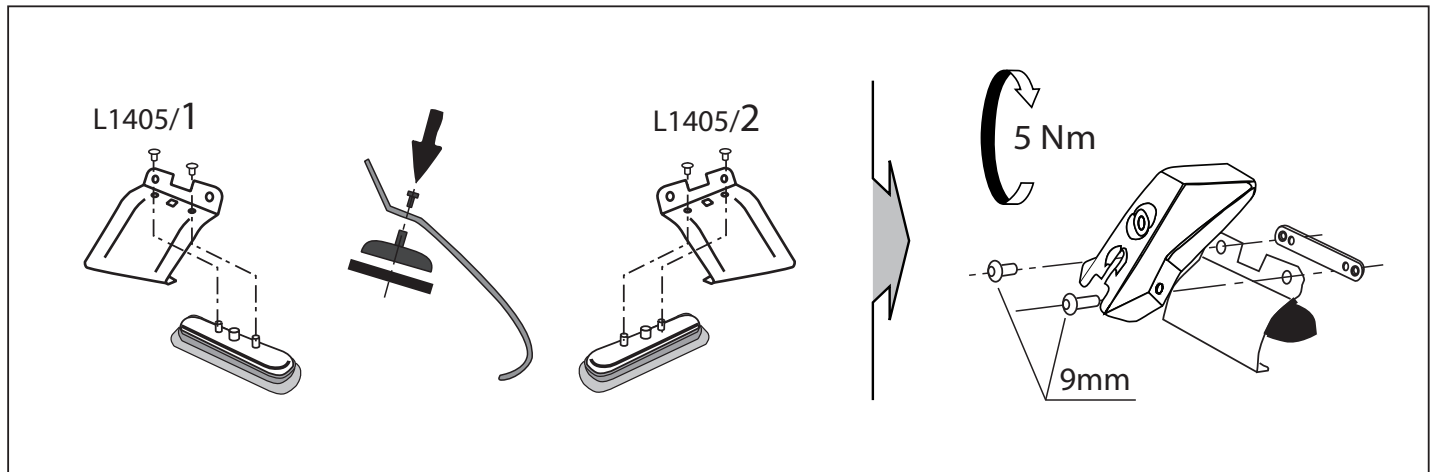
MOCSKT 289



MOCSRR0AC010 cm 110

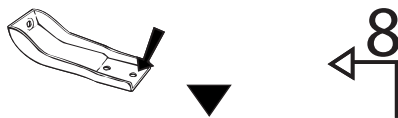
MOCSRR0AL006 cm 110

<p>2 - L1405/1 ant. sx + post. dx</p> 	<p>4 - L1204/4</p> 	<p>4 - RC20200026</p> 
<p>2 - L1405/2 ant. dx + post. sx</p> 	<p>4 - L1058/8</p> 	<p>8 - RCVM6X9Q</p> 
		<p>1 - RCBR5</p> 

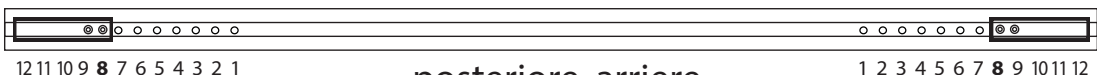
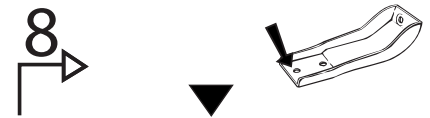


MOCSRR0AC010 cm 110

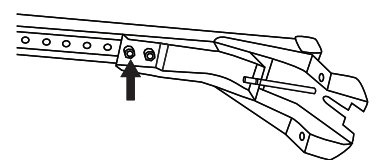
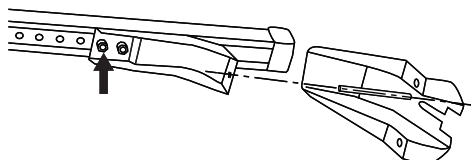
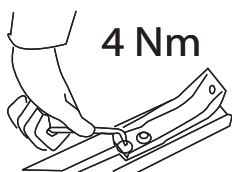
MOCSRR0AL006 cm 110



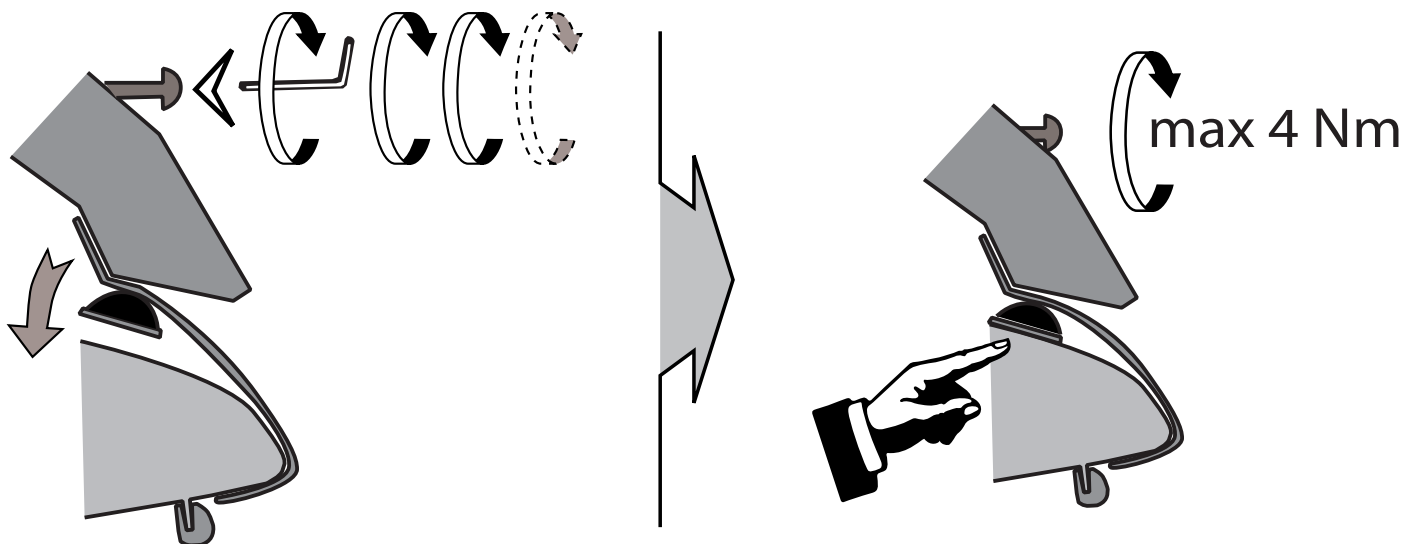
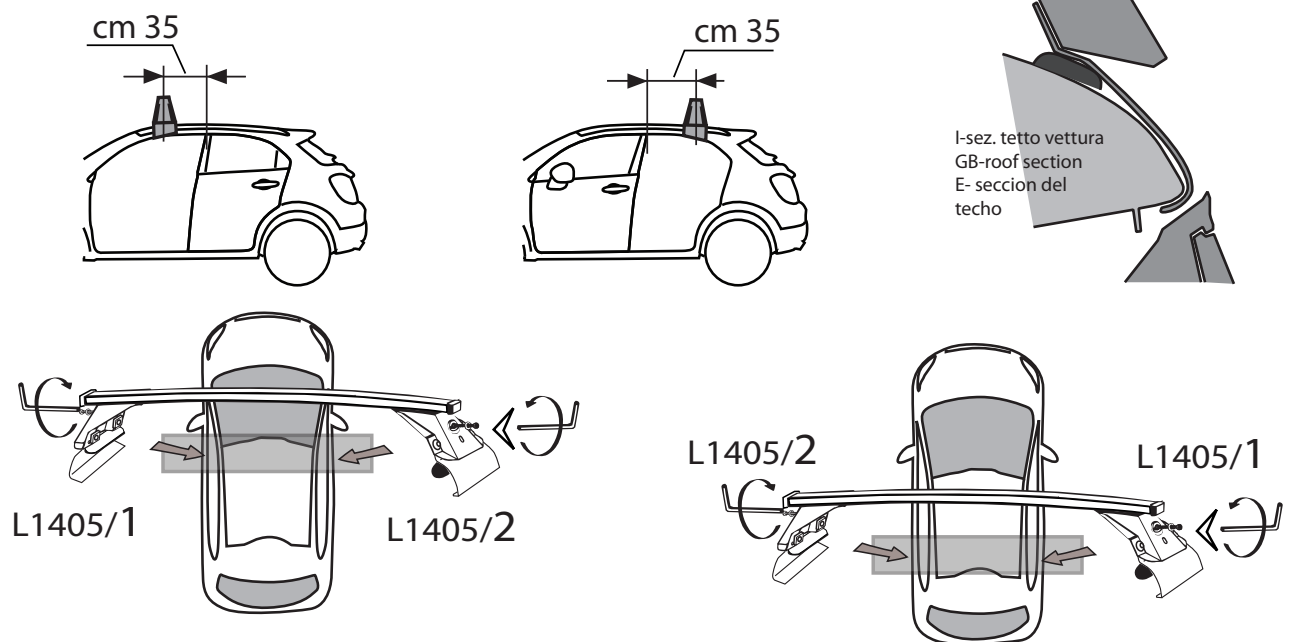
anteriore, avant, front,
vorne, delantera



posteriore, arriere,
rear, hinten, trasera



MOCSKT 289



I - Per stringere, usare la chiave come indicato nel disegno. (Non si assumono responsabilità per danni causati dall' impiego di chiavi diverse da quella in dotazione al prodotto).

F - Pour serrer, utiliser la clé comme indique ci dessous.

GB - To tighten please use the wrench as per the drawing.

D - Zum Anziehen benutzen Sie bitte den Inbusschlüssel, nur wie auf dem Bild dargestellt.

E - Para el correcto ajuste, utilizar la llave fija tal y como se indica en la imagen



MODULA
case system

email: modulacs@modulacs.com
web site: www.modulacs.com

Modula s.r.l.
Loc. Penisola, 20/A
61026 Piandimeleto (PU) ITALY
phone +39 0722/700070
fax +39 0722/720017

18-01-2016