


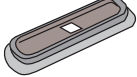







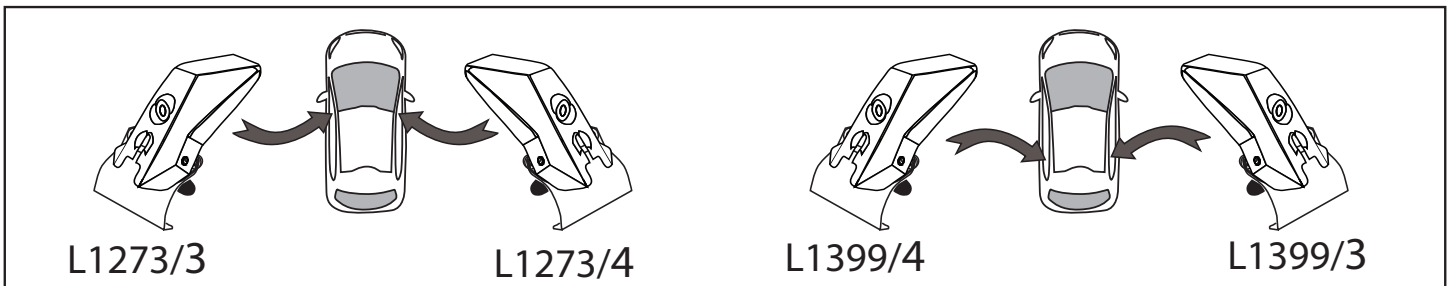
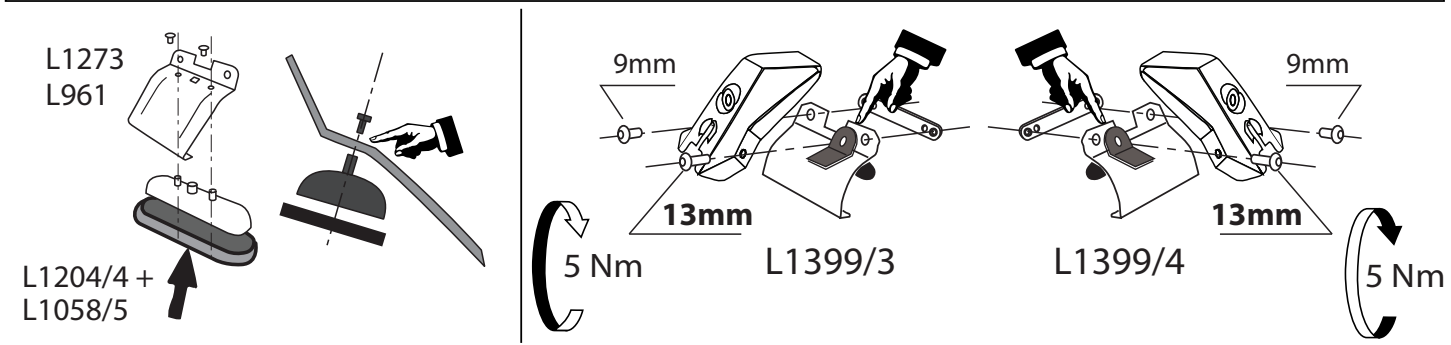
NISSAN Pulsar 2014

MOCSKT 284

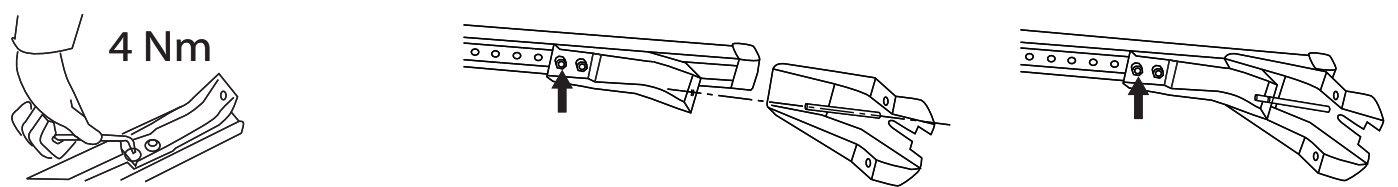
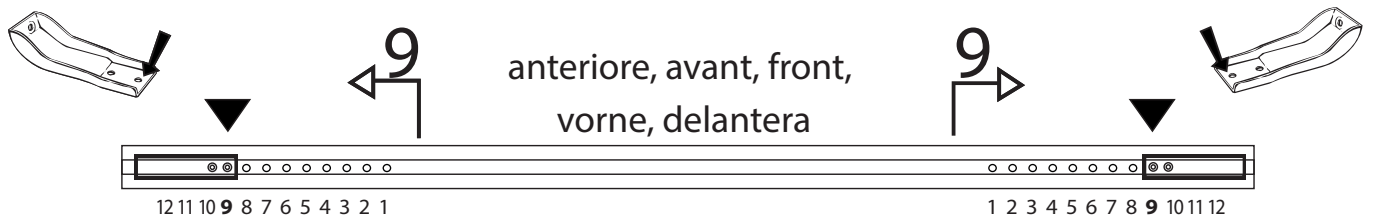


MOCSRROAC011 cm 124 MOCSRROAL007 cm 124

1 - L1273/3 ant. sx 	1 - L1399/3 post. dx 	4 - L1204/4  4 - L1058/5  2 - RC20011935 	2 - RCVM6X13Q  6 - RCVM6X9Q  4 - RC20200026  1 - RCBR5 
---	--	---	--



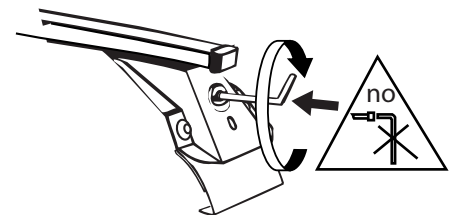
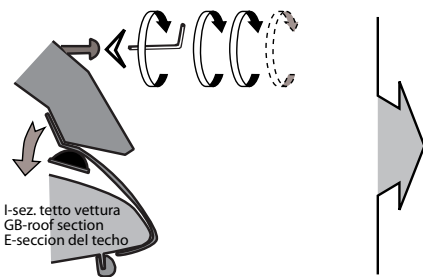
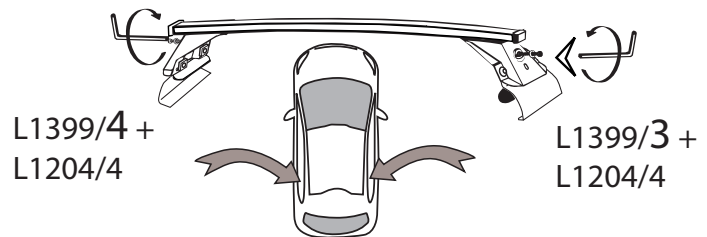
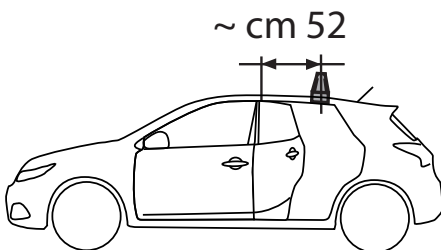
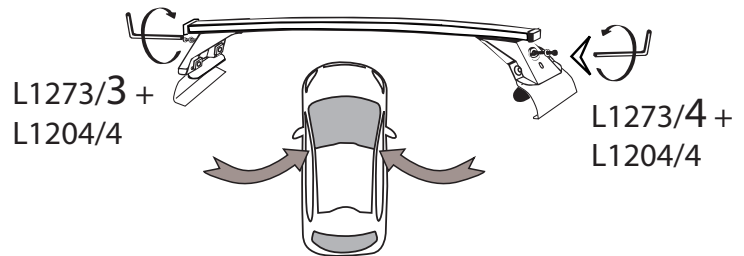
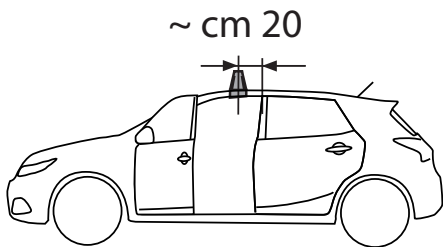
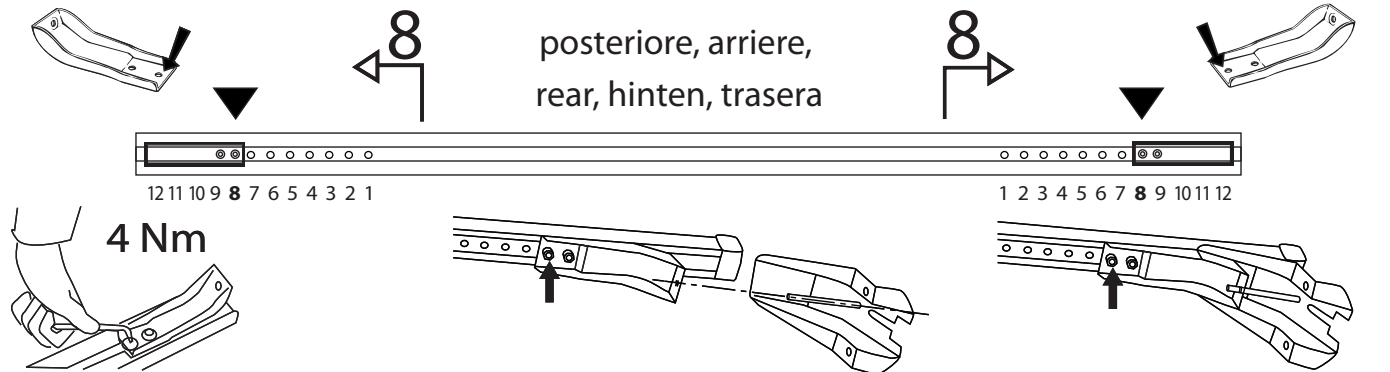
MOCSRROAC011 cm 124 MOCSRROAL007 cm 124



MOCSKT 284



MOCSRR0AC011 cm 124
MOCSRR0AL007 cm 124



I - Per stringere, usare la chiave come indicato nel disegno.
 (Non si assumono responsabilità per danni causati dall'impiego di chiavi diverse da quella in dotazione al prodotto).
 F - Pour serrer, utiliser la clé comme indiqué ci dessus.

GB - To tighten please use the wrench as per the drawing.
 D - Zum Anziehen benutzen Sie bitte den Inbusschlüssel, nur wie auf dem Bild dargestellt.
 E - Para el correcto ajuste, utilizar la llave fija tal y como se indica en la imagen