

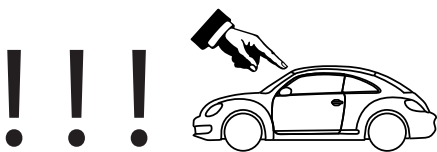
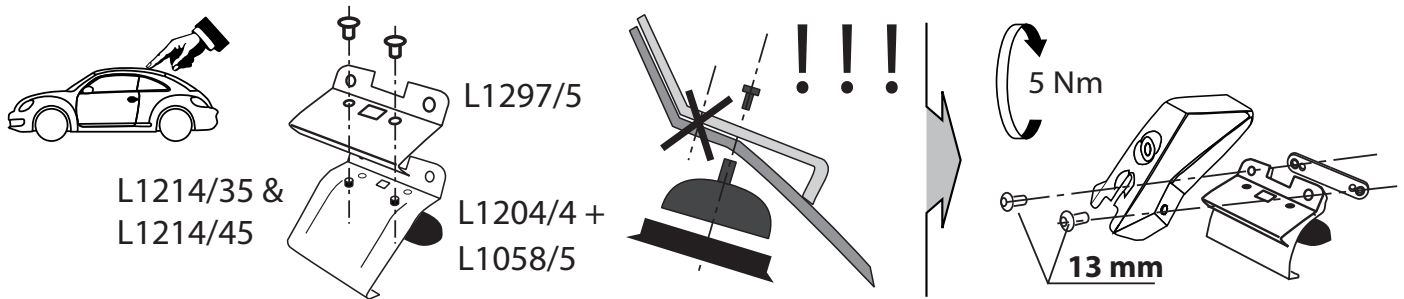
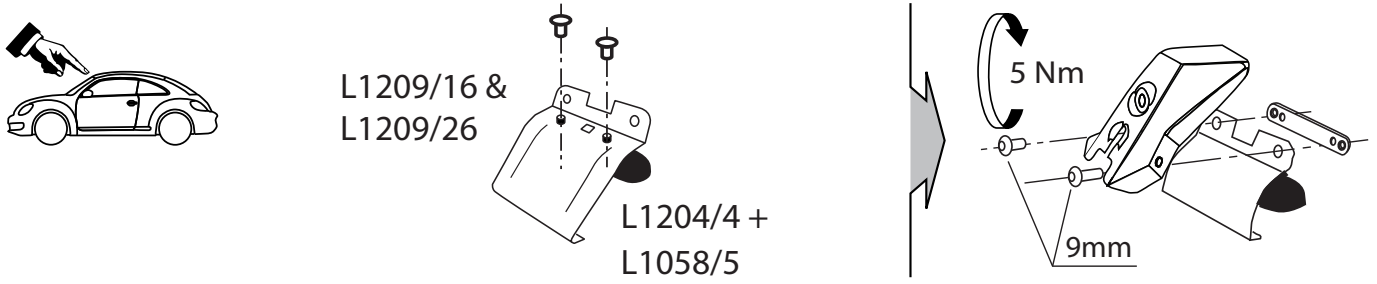
VW Maggiolino 2011 (model A5) MOCSKT 273

(Beetle - Coccinelle)

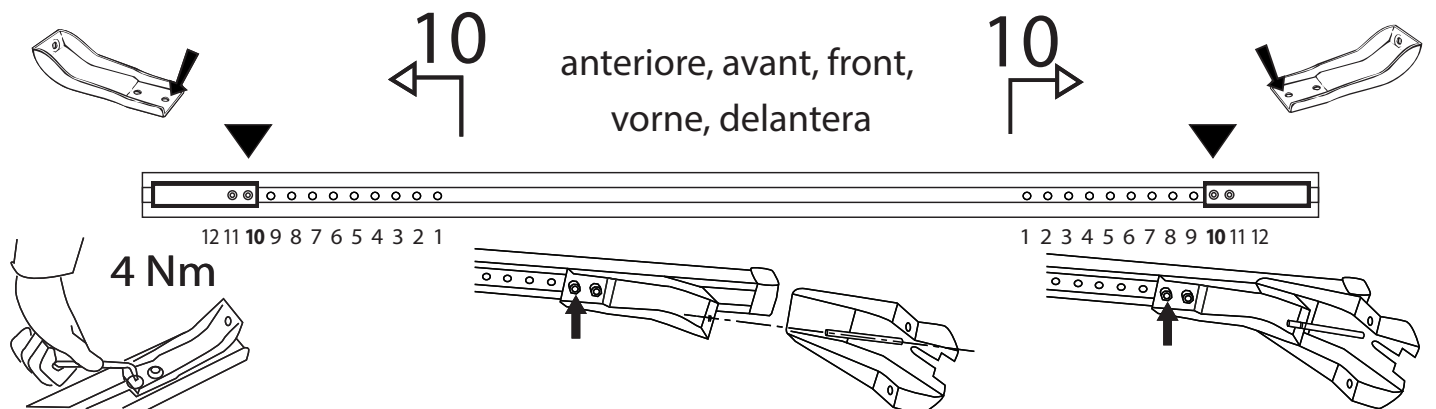


MOCSRR0AC011 cm 124
MOCSRR0AL007 cm 124

1 - L1209/16 ant. sx	1 - L1214/35 post. dx	2 - L1297/5	4 - RCVM6X13Q
1 - L1209/26 ant. dx	1 - L1214/45 post. sx	4 - L1204/4	4 - RCVM6X19Q
		4 - L1058/5	4 - RC20200026
		1 - inseritore	1 - RCBR5



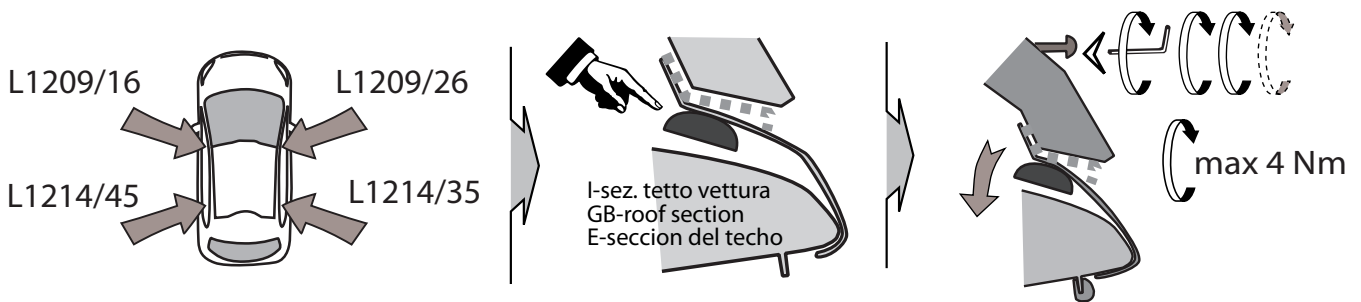
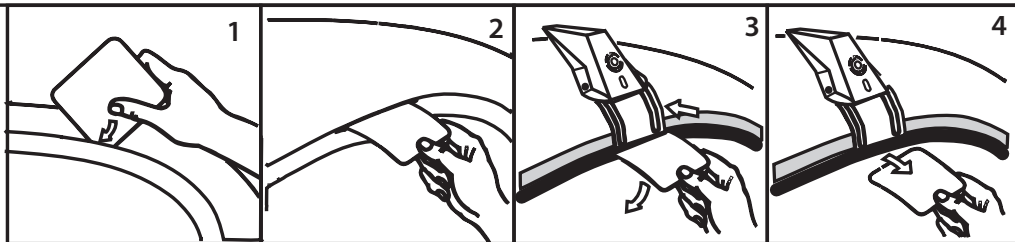
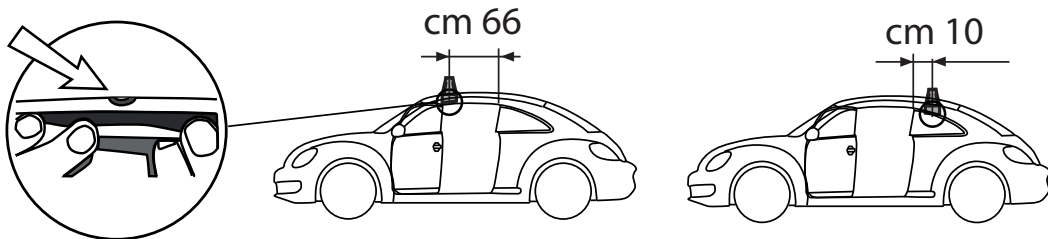
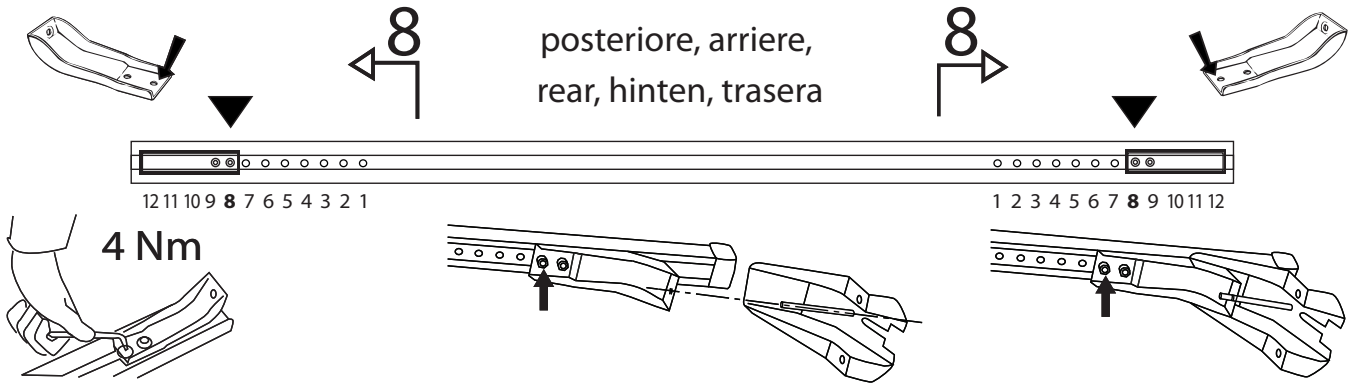
MOCSRR0AC011 cm 124
MOCSRR0AL007 cm 124





MOCSRR0AC011 cm 124
MOCSRR0AL007 cm 124

MOCSKT 273



I - Per stringere, usare la chiave come indicato nel disegno. (Non si assumono responsabilità per danni causati dall'impiego di chiavi diverse da quella in dotazione al prodotto).
 F - Pour serrer, utiliser la clé comme indique ci dessous.

GB - To tighten please use the wrench as per the drawing.
 D - Zum Anziehen benutzen Sie bitte den Inbusschlüssel, nur wie auf dem Bild dargestellt.
 E - Para el correcto ajuste, utilizar la llave fija tal y como se indica en la imagen

