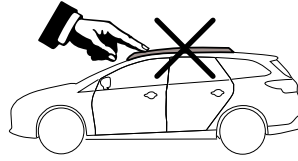


FORD Focus Wagon

model 2011 - no roof rails

!!!



MOCSKT 261



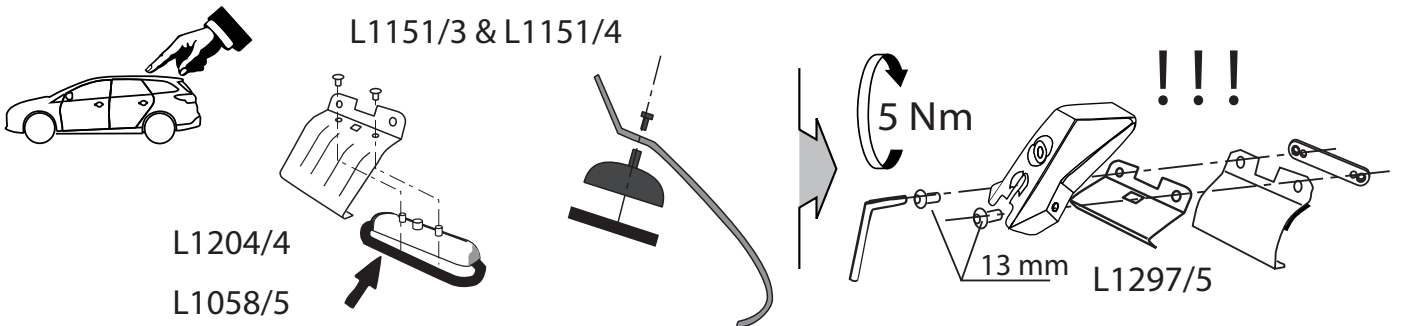
MOCSRROAC011 cm 124

MOCSRROAL007 cm 124

1 - L1289/1 ant. sx		1 - L1151/3 post. dx		2 - RC1500/95		4 - RCVM6X13Q	
1 - L1289/2 ant. dx		1 - L1151/4 post. sx		2 - L1204/4		4 - RCVM6X9Q	
		2 - L1297/5		2 - L1058/5		4 - RC20200026	
						1 - RCBR5	



L1289/1 & L1289/2



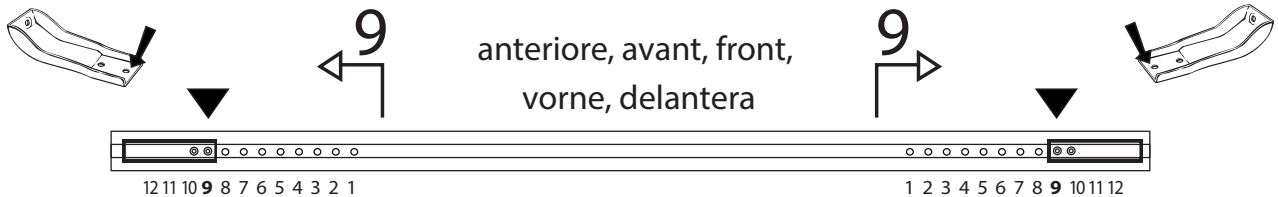
L1204/4
L1058/5

L1297/5

!!!

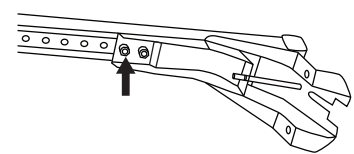
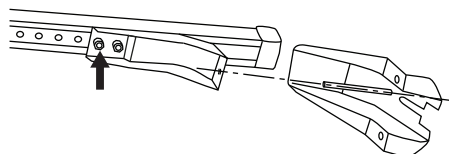
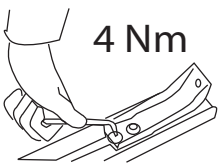


MOCSRROAC011 cm 124
MOCSRROAL007 cm 124



anteriore, avant, front,
vorne, delantera

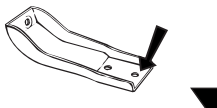
4 Nm



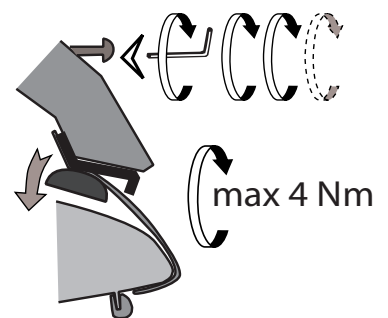
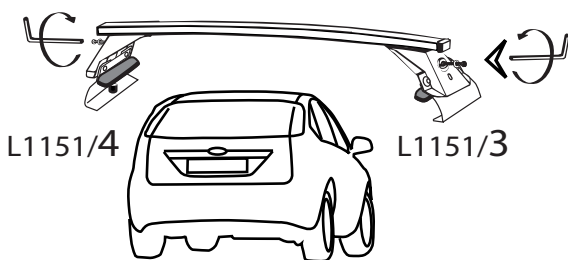
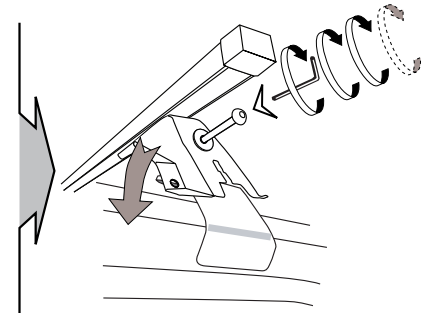
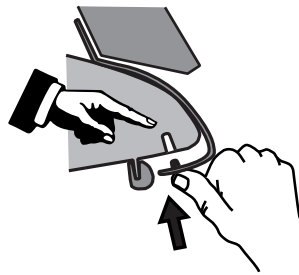
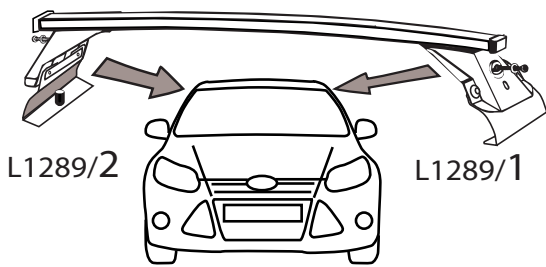
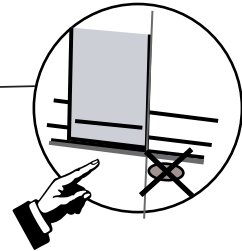
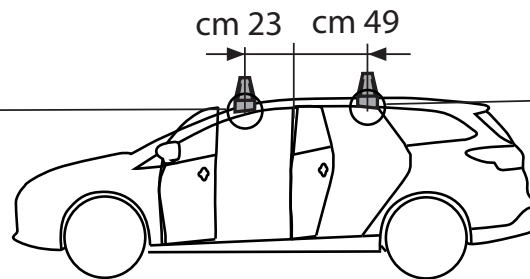
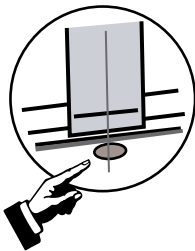
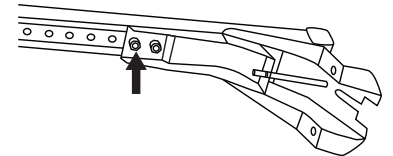
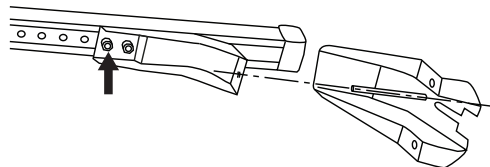
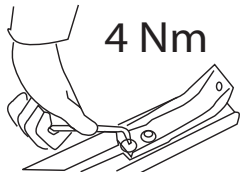
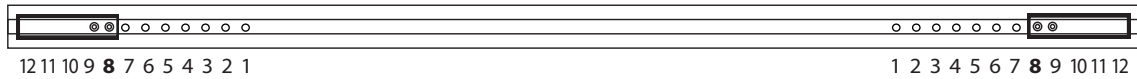
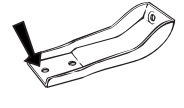
MOCSKT 261



MOCSRR0AC011 cm 124
MOCSRR0AL007 cm 124



posteriore, arriere,
 rear, hinten, trasera



I - Per stringere, usare la chiave come indicato nel disegno. (Non si assumono responsabilità per danni causati dall'impiego di chiavi diverse da quella in dotazione al prodotto).
 F - Pour serrer, utiliser la clé comme indique ci dessous.

GB - To tighten please use the wrench as per the drawing.
 D - Zum Anziehen benutzen Sie bitte den Inbusschlüssel, nur wie auf dem Bild dargestellt.
 E - Para el correcto ajuste, utilizar la llave fija tal y como se indica en la imagen

