

MAZDA 6 sedan 2012

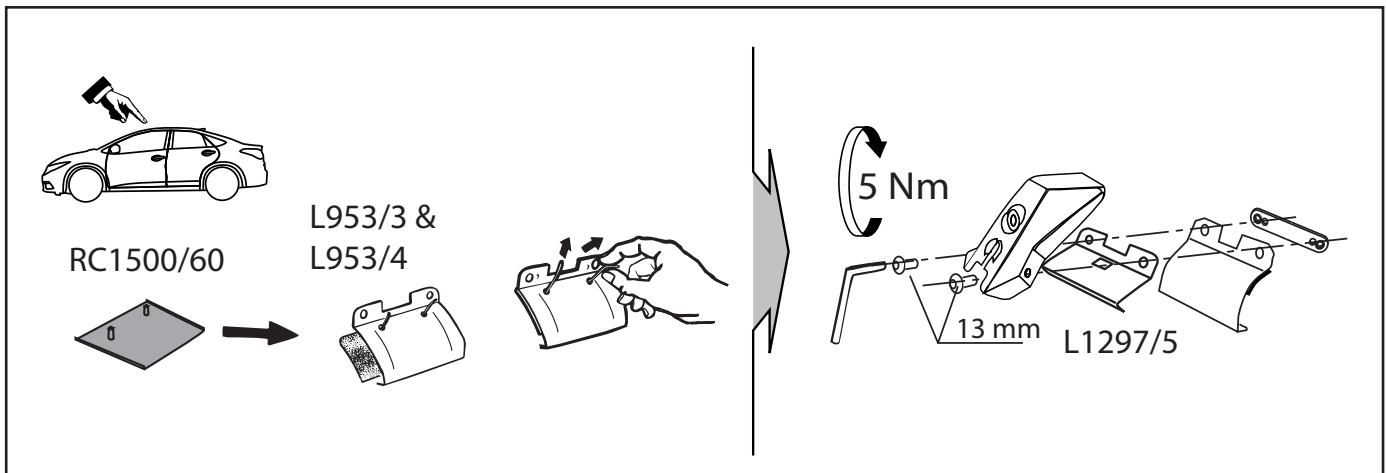
MOCSKT 252



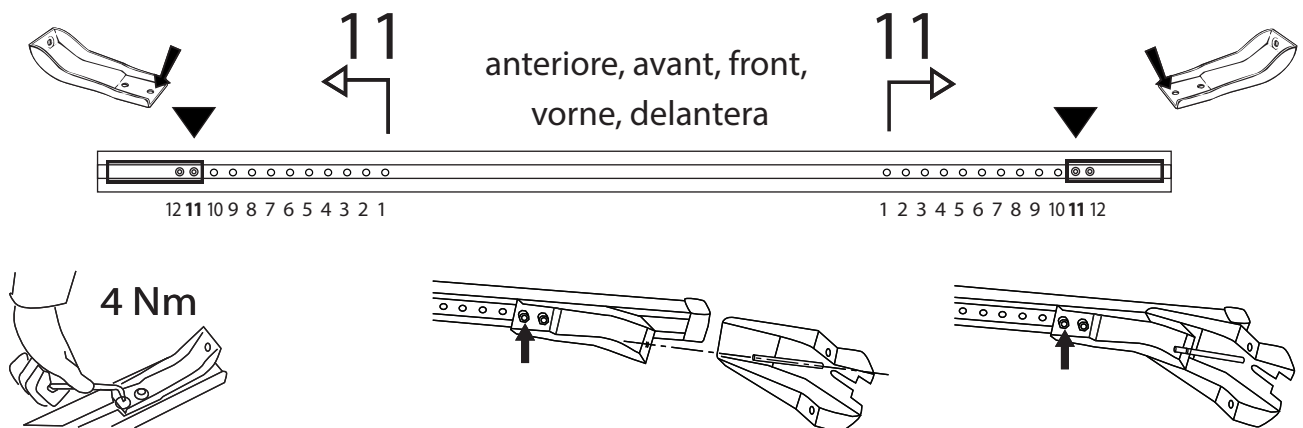
MOCSRR0AC011 cm 124

MOCSRR0AL007 cm 124

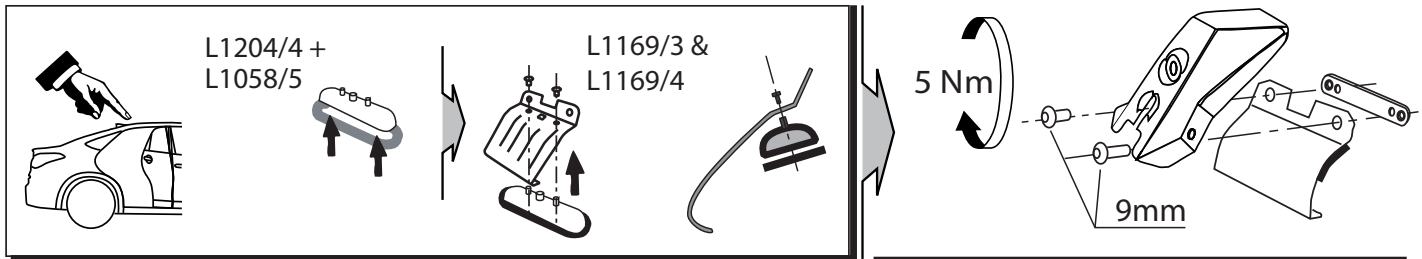
1 - L953/3 ant sx		1 - L1169/3 post dx		2 - L1204/4		4 - RCVM6X9Q	
1 - L953/4 ant dx		1 - L1169/4 post sx		2 - RC1500/60		4 - RCVM6X13Q	
2 - L1297/5		2 - L1058/5		4 - RC20200026		1 - RCBR5	



!!! **MOCSRR0AC011 cm 124 - MOCSRR0AL007 cm 124**



MOCSKT 252



!!!

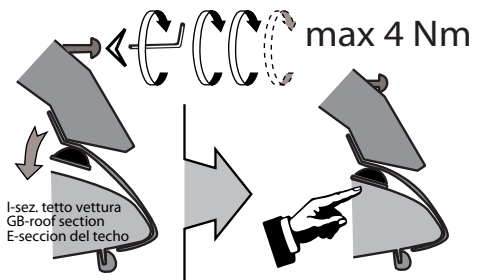
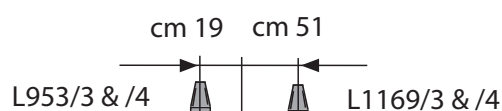
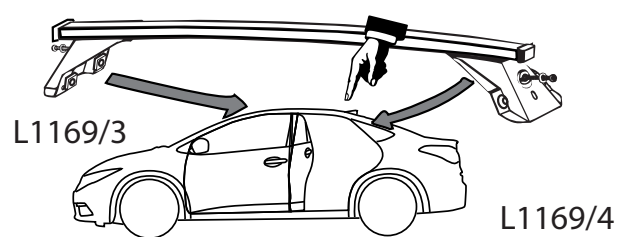
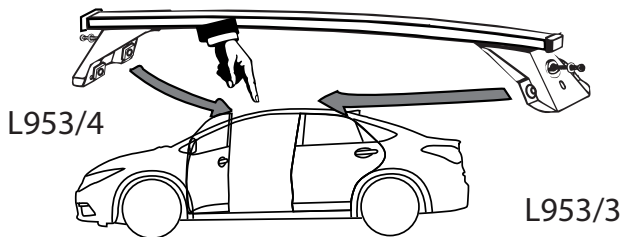
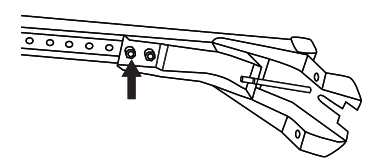
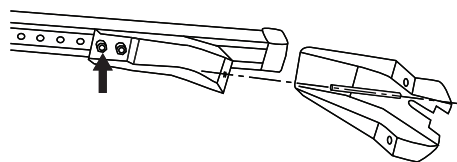
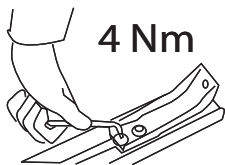
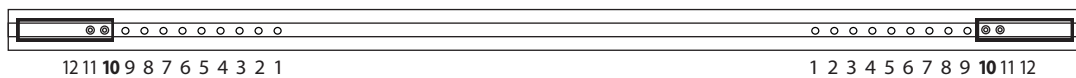


MOCSRR0AC011 cm 124

MOCSRR0AL007 cm 124



posteriore, arriere,
rear, hinten, trasera



I - Per stringere, usare la chiave come indicato nel disegno. (Non si assumono responsabilità per danni causati dall'impiego di chiavi diverse da quella in dotazione al prodotto).
F - Pour serrer, utiliser la clé comme indique ci dessus.

GB - To tighten please use the wrench as per the drawing.
D - Zum Anziehen benutzen Sie bitte den Inbusschlüssel, nur wie auf dem Bild dargestellt.
E - Para el correcto ajuste, utilizar la llave fija tal y como se indica en la imagen

