

MOCSKT 250

HONDA CR-V model 2012

MOCSRR0AC011 cm 124

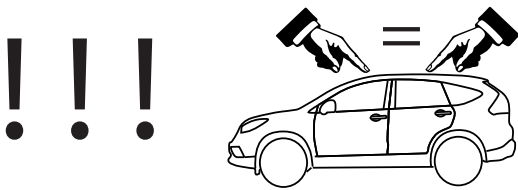
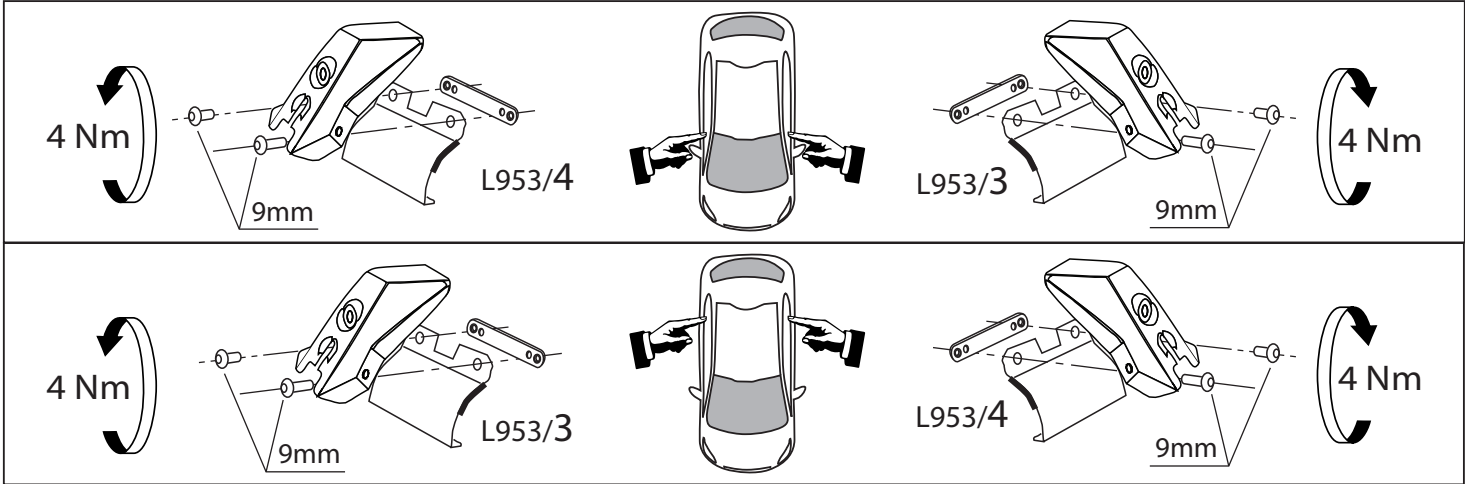
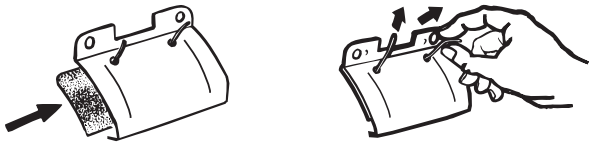
MOCSRR0AL007 cm 124



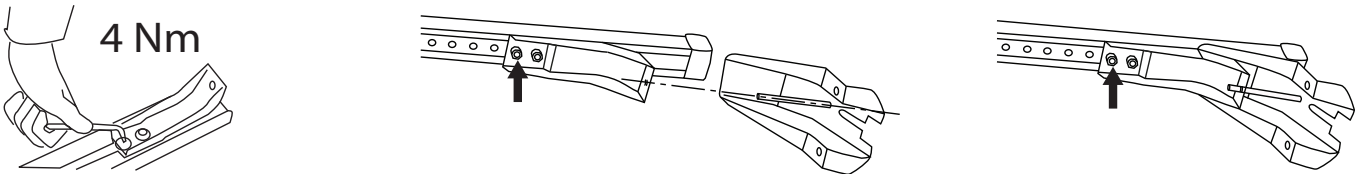
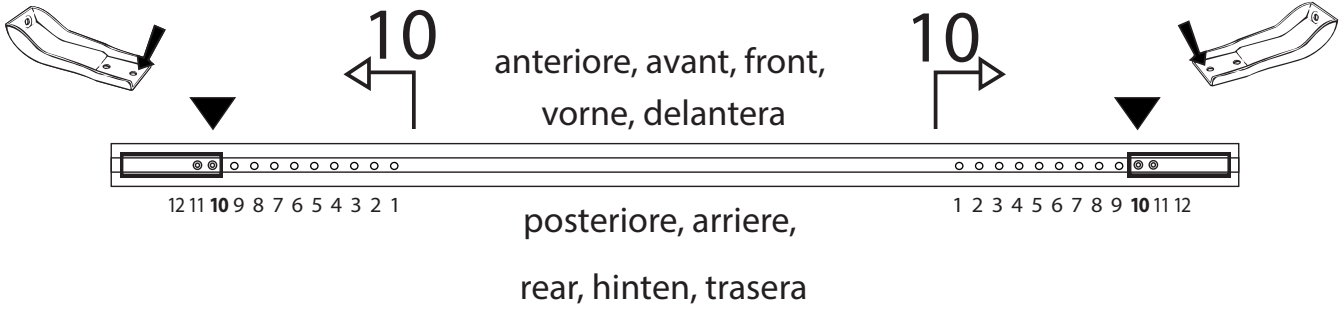
2 - L953/3 ant sx + post dx 2 - L953/4 ant dx + post sx		4 - RC1500/95 8 - RCVM6X9Q		4 - R20200026 1 - RCBR5	
--	--	-----------------------------------	--	--------------------------------	--

I - montare le guarnizioni
F - monter les joints
GB - fit the gaskets

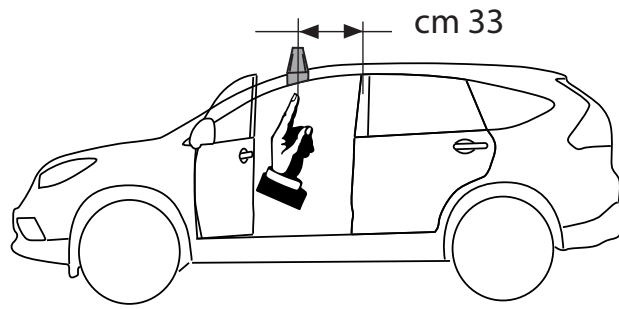
D - Die Dichtungen einsetzen
E - montar las juntas



MOCSRR0AC011 cm 124
MOCSRR0AL007 cm 124



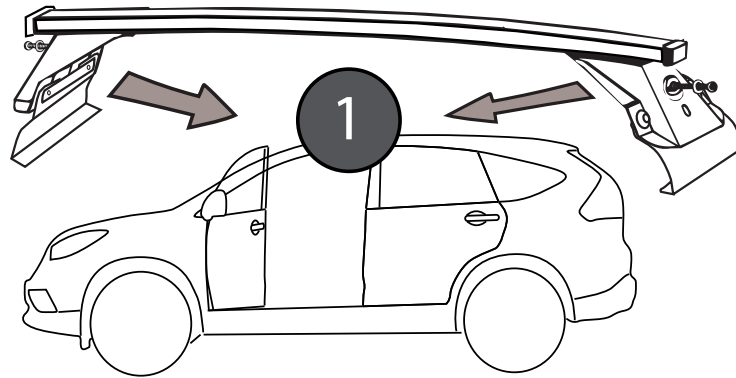
MOCSKT 250



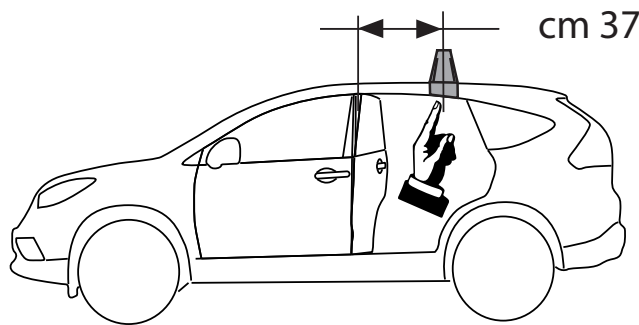
I-sez. tetto vettura
GB-roof section
E-seccion del techo



L953/4



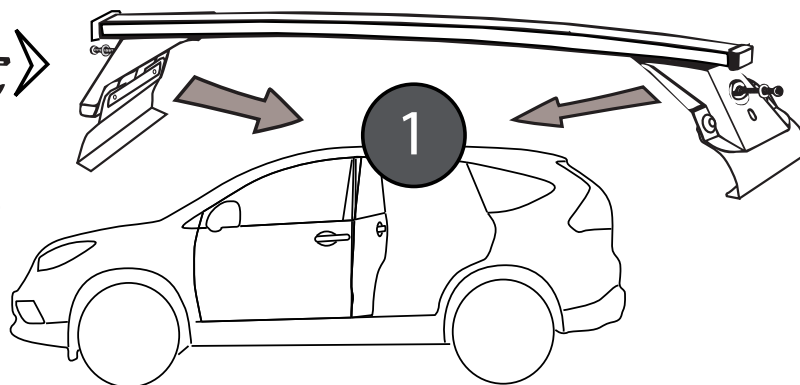
L953/3



I-sez. tetto vettura
GB-roof section
E-seccion del techo



L953/3



L953/4

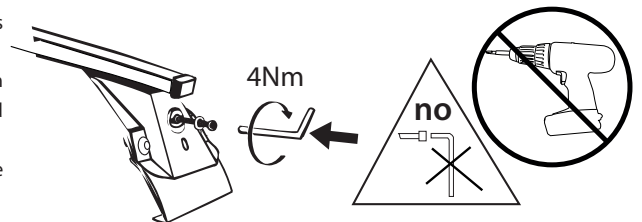
I - Per stringere, usare la chiave come indicato nel disegno. (Non si assumono responsabilità per danni causati dall'impiego di chiavi diverse da quella in dotazione al prodotto).

F - Pour serrer, utiliser la clé comme indique ci dessous.

GB - To tighten please use the wrench as per the drawing.

D - Zum Anziehen benutzen Sie bitte den Inbusschlüssel, nur wie auf dem Bild dargestellt.

E - Para el correcto ajuste, utilizar la llave fija tal y como se indica en la imagen



MODULA
case system

email: modulacs@modulacs.com
web site: www.modulacs.com

Modula s.r.l.
Loc. Penisola, 20/A
61026 Piandimeleto (PU) ITALY
phone +39 0722/700070
fax +39 0722/720017

18-01-2016