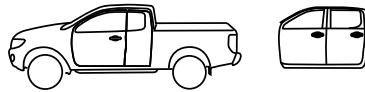


FORD Ranger (T6) 2012

Extended Cab / Double Cab



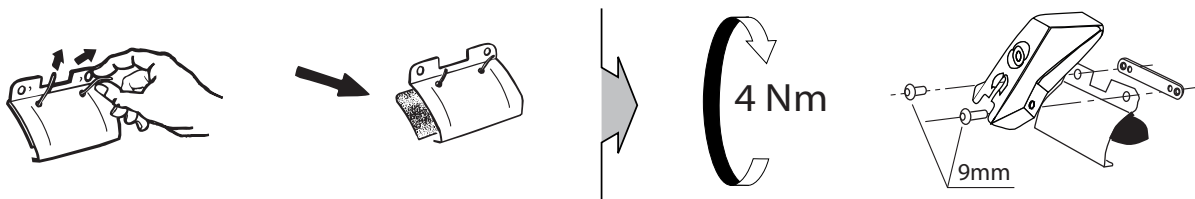
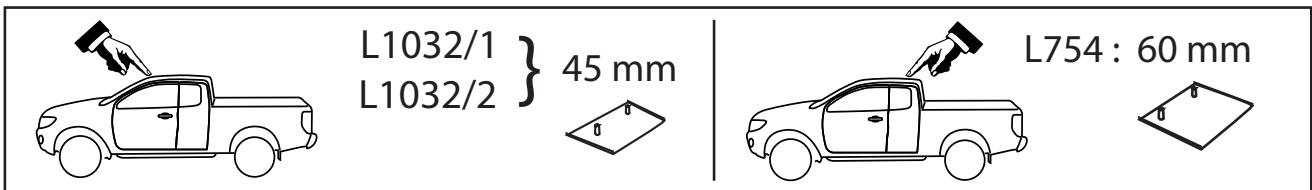
MOCSKT 242



MOCSRR0AC011 cm 124

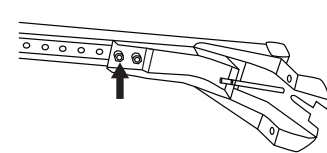
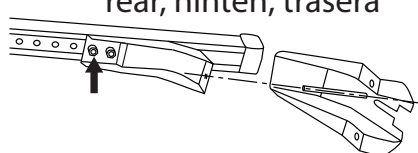
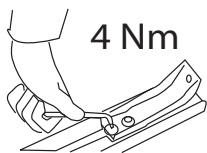
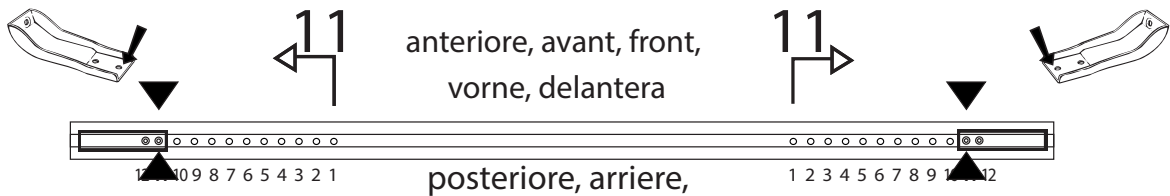
MOCSRR0AL007 cm 124

1 - L1032/1 ant sx		2 - L754 post		4 - RC20200026	
1 - L1032/2 ant dx		2 - RC1500/45		8 - RCVM6X9Q	
		2 - RC1500/60		1 - RCBR5	

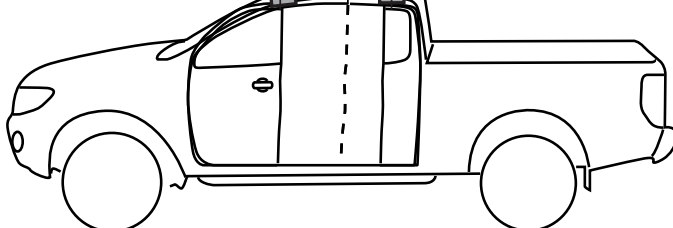
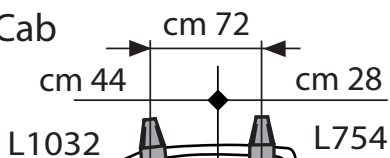


MOCSRR0AC011 cm 124

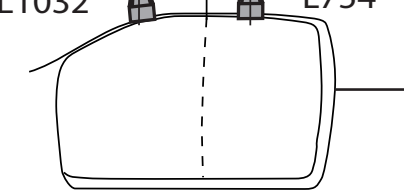
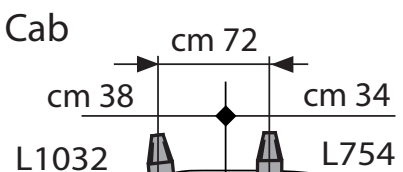
MOCSRR0AL007 cm 124



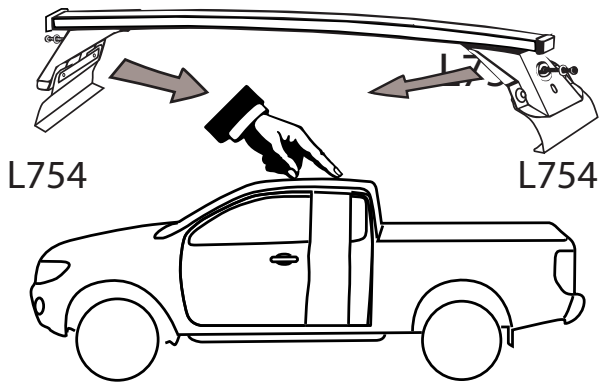
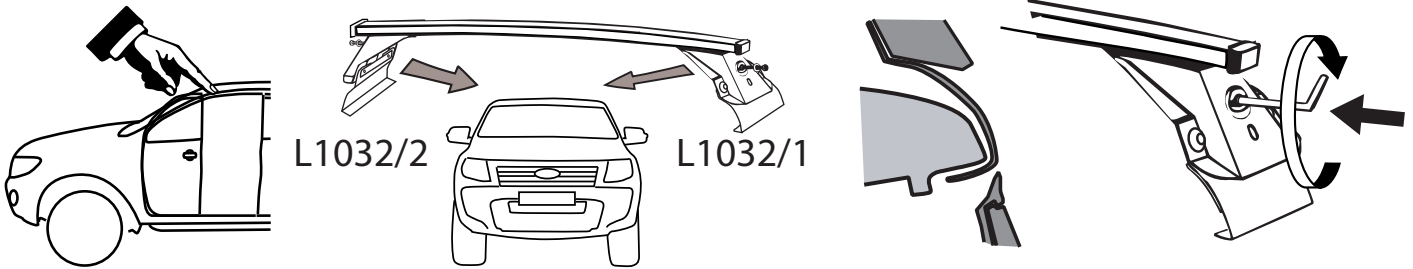
Extended Cab



Double Cab



MOCSKT 242



I - Per stringere, usare la chiave come indicato nel disegno. (Non si assumono responsabilità per danni causati dall' impiego di chiavi diverse da quella in dotazione al prodotto).
F - Pour serrer, utiliser la clé comme indique ci dessus.

GB - For tightening, please use the wrench as per the drawing.
D - Zum Anziehen benutzen Sie bitte den Inbusschlüssel, nur wie auf dem Bild dargestellt.
E - Para el correcto ajuste, utilizar la llave fija tal y como se indica en la imagen

