

# AUDI A1 Sportback 5 porte model 2012

**MOC SKT 219**

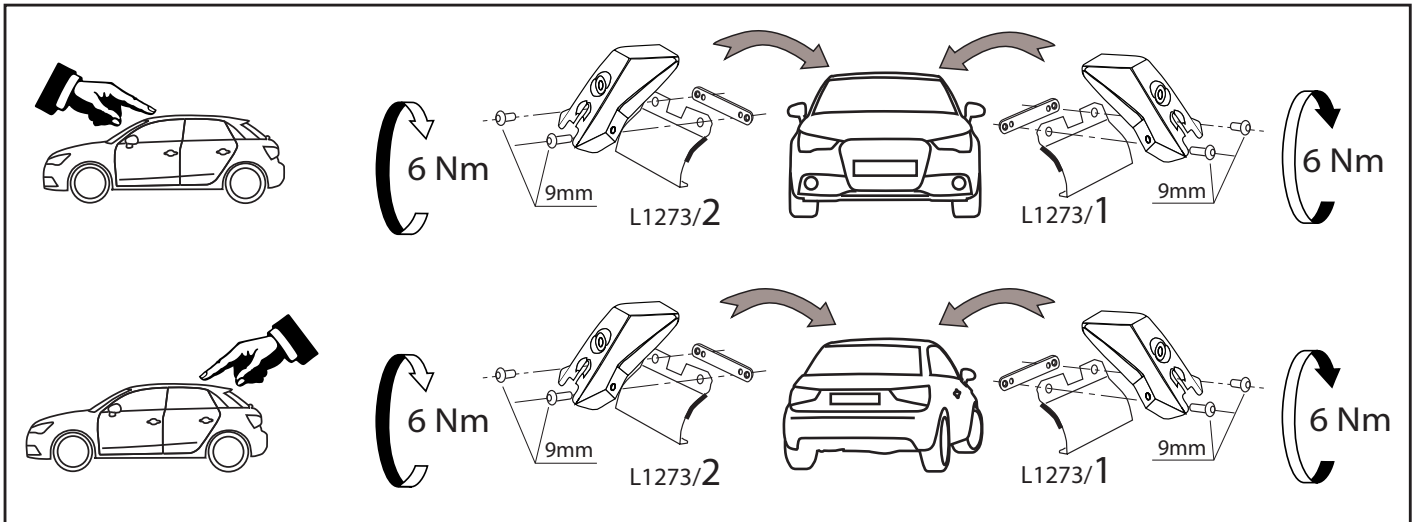
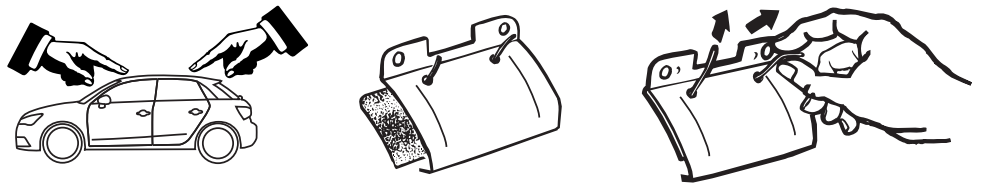
**MOC SRR0AC010 cm 110**

**MOC SRR0AL006 cm 110**

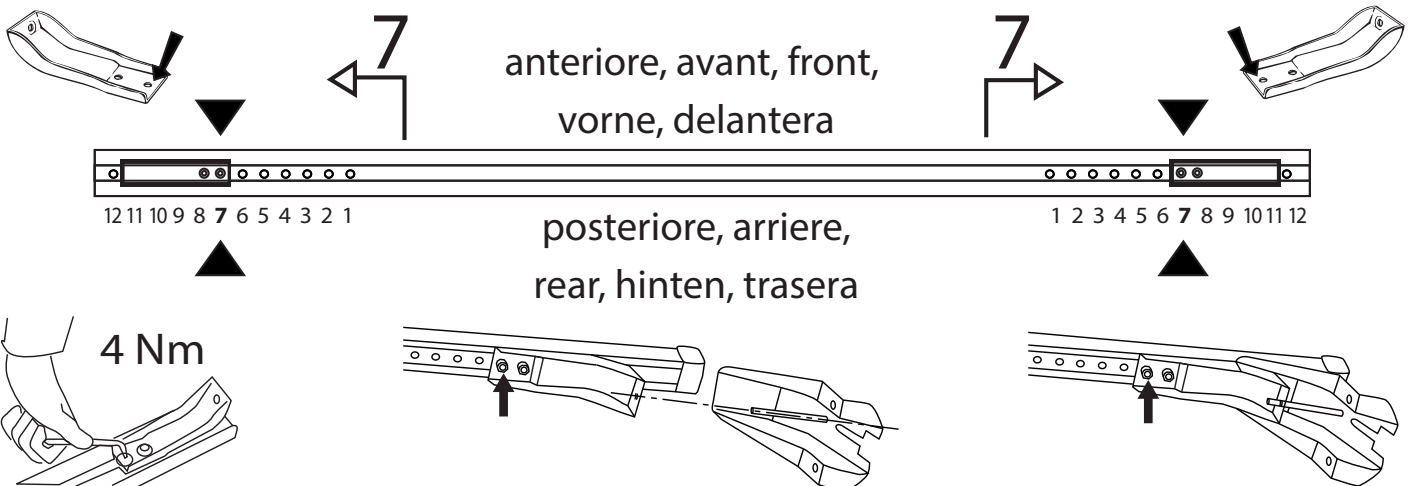


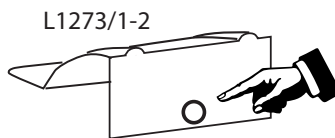
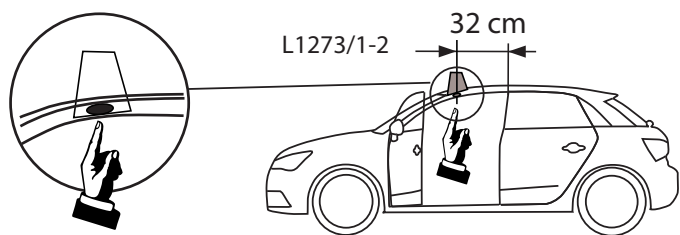
2 - L1273/1 ant sx post dx		4 - RC1500/45		4 - RC20200026	
2 - L1273/2 ant dx post sx		4 - RCVM6X12Q	12 mm	1 - RCBR5	
		8 - RCVM6X9Q	9 mm	1 - RCRB4	

I - montare le guarnizioni  
F - monter les joints  
GB - fit the gaskets  
D - Die Dichtungen einsetzen  
E - montar las juntas



**MOC SRR0AC010 cm 110**  
**MOC SRR0AL006 cm 110**



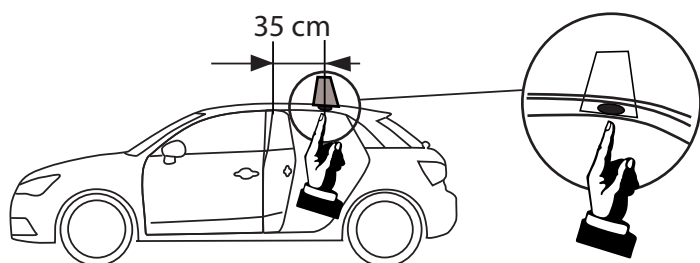
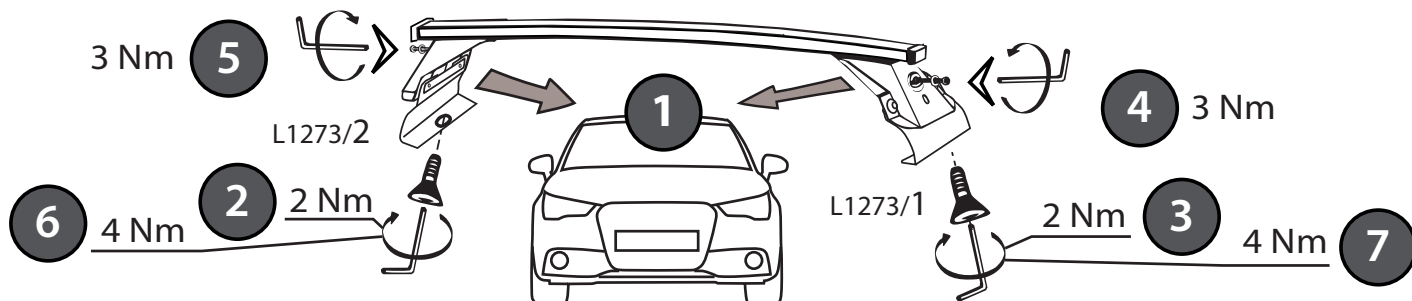


# MOCSKT 219

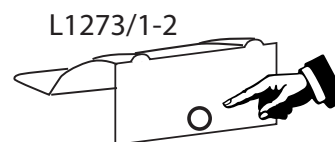


I-sez. tetto vettura  
GB-roof section  
E- seccion del  
techo

RCVM6X12Q

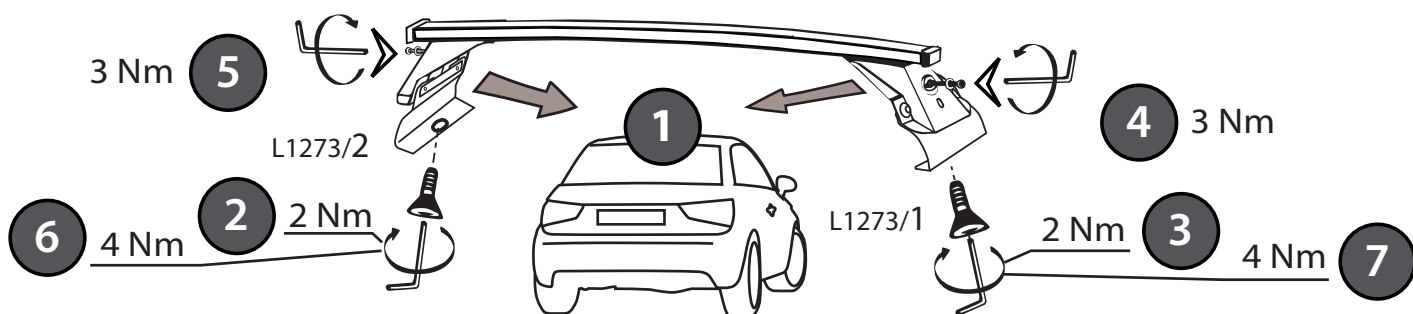


L1273/1-2



I-sez. tetto vettura  
GB-roof section  
E- seccion del  
techo

RCVM6X12Q



I - Per stringere, usare la chiave come indicato nel disegno. (Non si assumono responsabilità per danni causati dall'impiego di chiavi diverse da quella in dotazione al prodotto).

F - Pour serrer, utiliser la clé comme indique ci dessous.

GB - To tighten please use the wrench as per the drawing.

D - Zum Anziehen benutzen Sie bitte den Inbusschlüssel, nur wie auf dem Bild dargestellt.

E - Para el correcto ajuste, utilizar la llave fija tal y como se indica en la imagen

