

CHEVROLET Aveo 2011

MOCSKT 210

MOCRR0AC010 cm 110

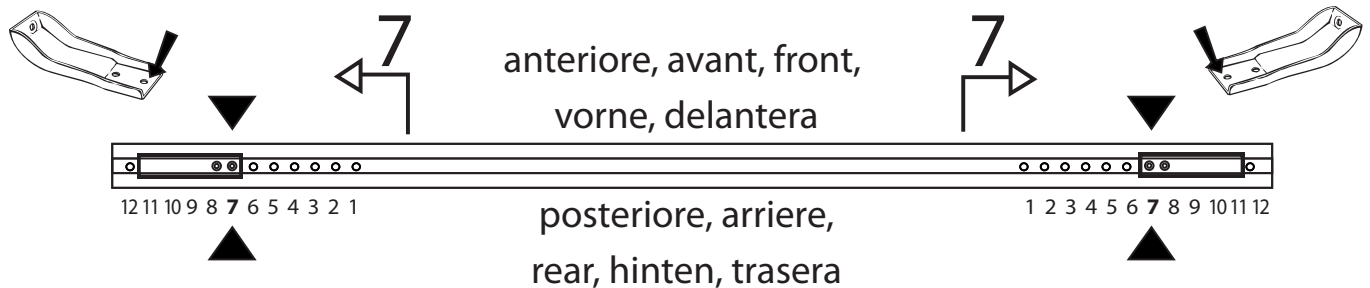
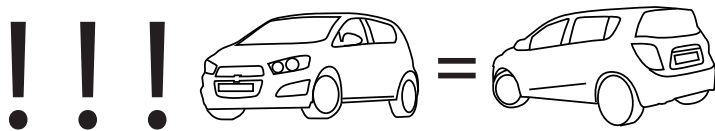
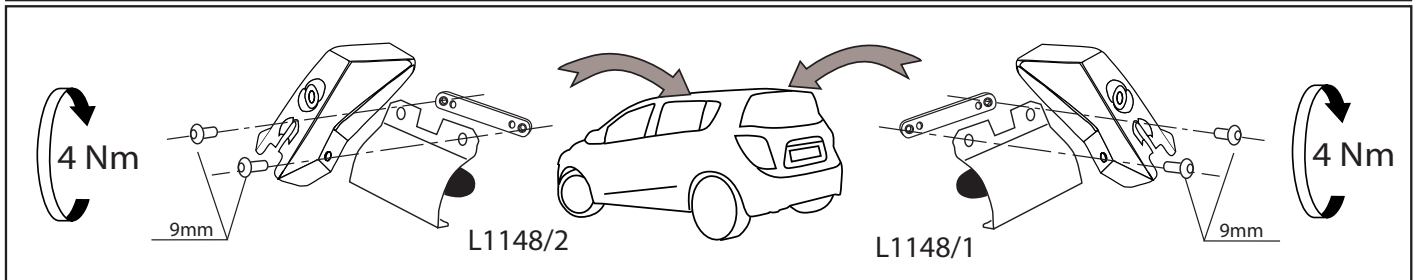
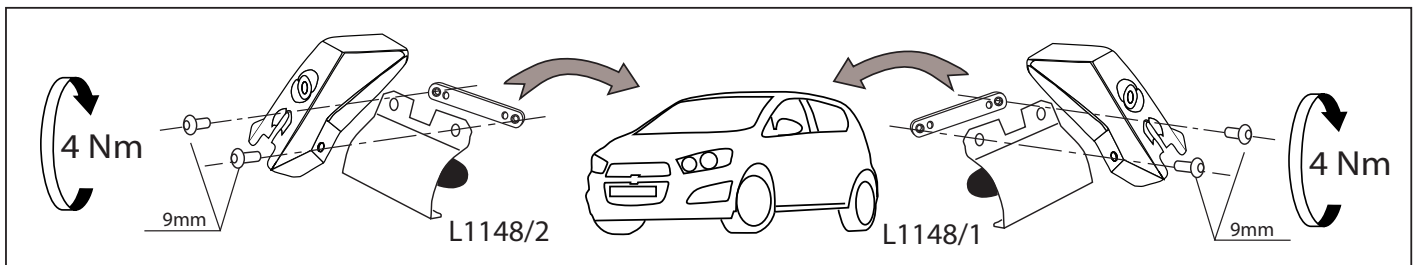
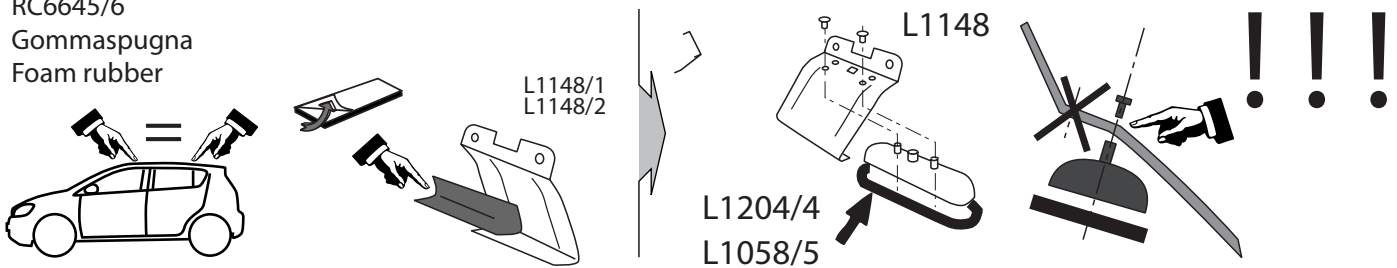
MOCRR0AL006 cm 110



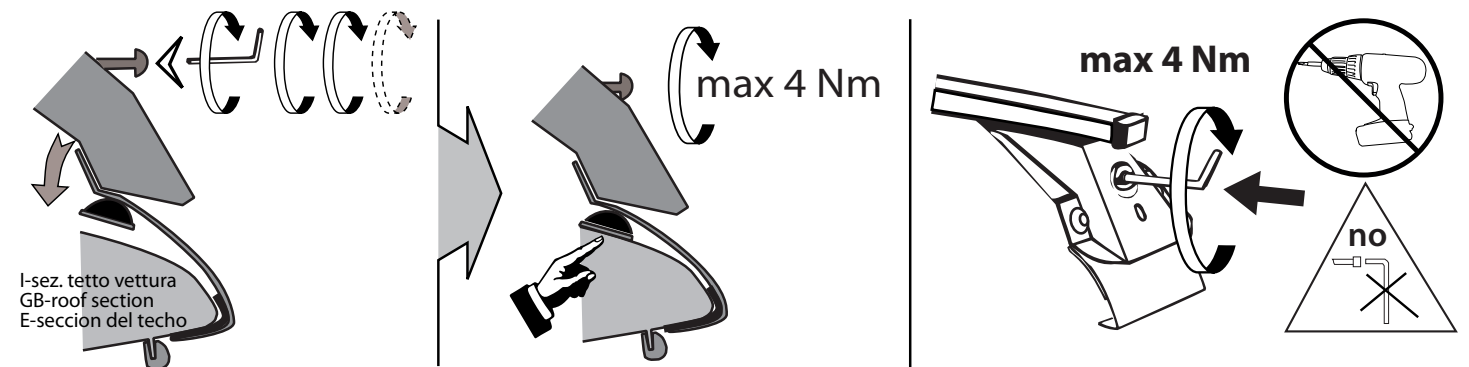
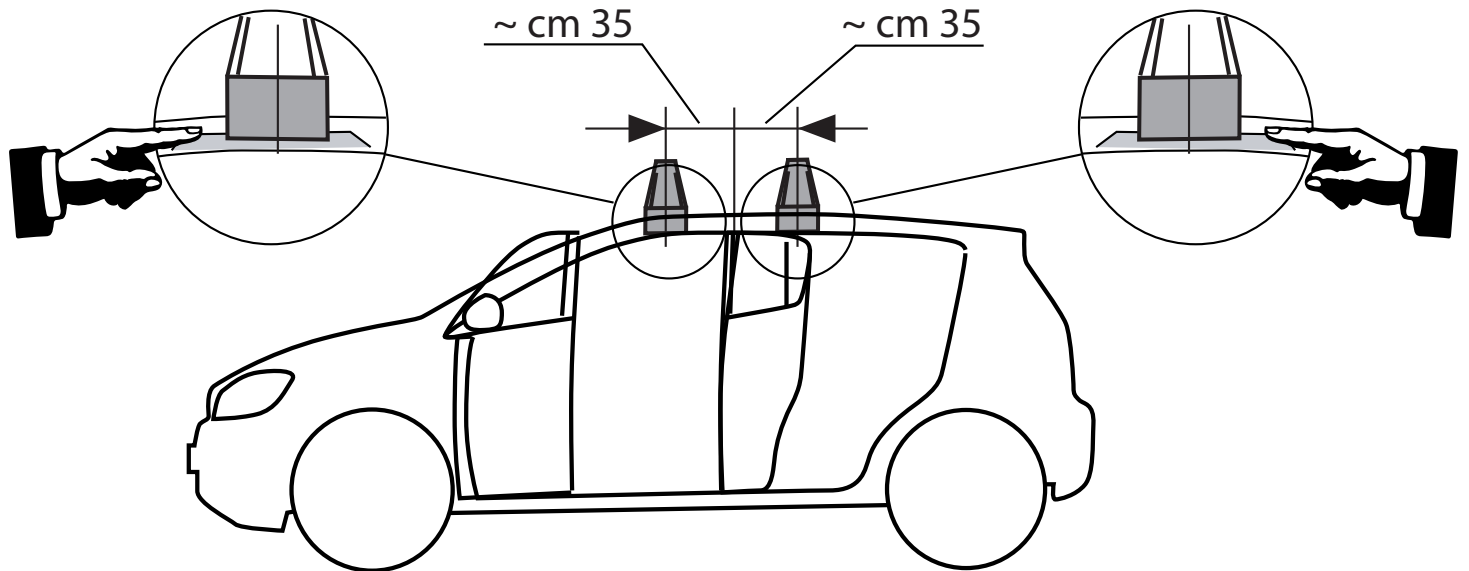
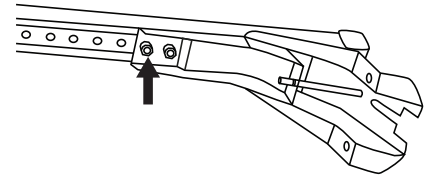
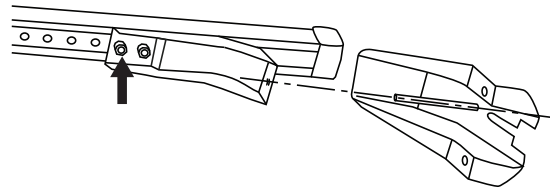
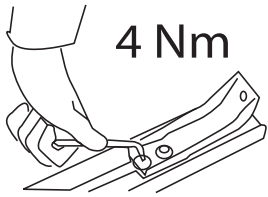
| | | | | | |
|---------------------------------|--|--------------|--|----------------|--|
| 2 - L1148/1 ant. sx post. dx | | 4 - L1204/4 | | 8 - RCVM6X9Q | |
| 2 - L1148/2 ant. dx post. sx | | 4 - L1058/5 | | 4 - RC20200026 | |
| | | 4 - RC6645/6 | | 1 - RCBR5 | |

RC6645/6

Gommaspugna
Foam rubber



MOCSKT 210



I - Per stringere, usare la chiave come indicato nel disegno. (Non si assumono responsabilità per danni causati dall' impiego di chiavi diverse da quella in dotazione al prodotto).

F - Pour serrer, utiliser la clé comme indique ci dessous.

GB - To tighten please use the wrench as per the drawing.

D - Zum Anziehen benutzen Sie bitte den Inbuschlüssel, nur wie auf dem Bild dargestellt.

E - Para el correcto ajuste, utilizar la llave fija tal y como se indica en la imagen