

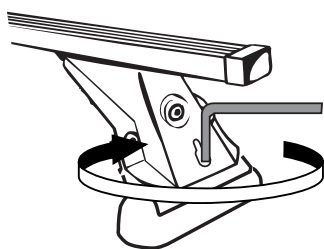
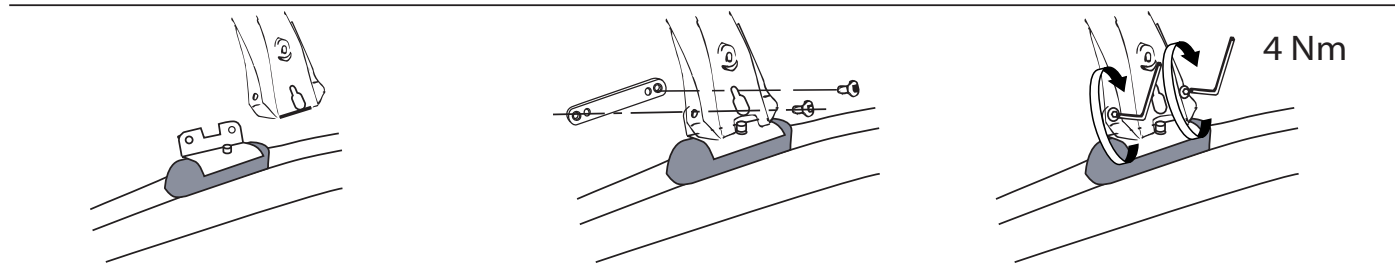
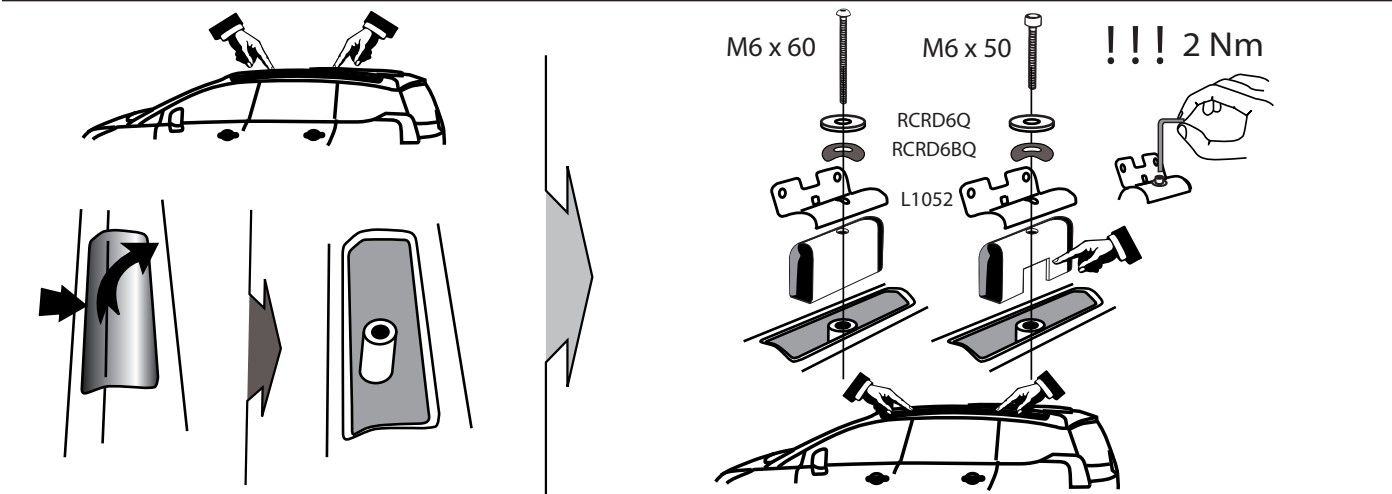
# PEUGEOT 5008 rails, modanature model 2009 MOCSKT 171

**MOCSRR0AL007 cm 124**

**MOCSRR0AC013 cm 124**



componenti:				
4 - L1052/2		8 - RCVM6X9Q		2 - RC29110107 M6 x 50
2 - L1269/5 ant		4 - RC20200026		2 - RCVM6X60Q
2 - L1269/6 post		4 - RCRD6Q		1 - RCBR5 normale
		4 - RCRD6BQ		



**!!!  
4 Nm**

- I- Stringere le viti utilizzando la chiave in dotazione come indicato; serrare a 4 Nm.
- F- Serrer les vis en utilisant la clé dans le sens indiqué; serrer a 4 Nm.
- GB- Tighten the allen key head screws using the allen key provided, tighten at 4 Nm.
- D- Drehen Sie die Gewindestange nur mit dem mitgelieferten Schlüssel mit 4Nm fest.
- E- Apriete los tornillos cabeza allen utilizando la llave allen suministrada. Apretar a 4 Nm.



**MODULA**  
case system

email: modulacs@modulacs.com  
web site: www.modulacs.com

Modula s.r.l.  
Loc. Penisola, 20/A  
61026 Piandimeleto (PU) ITALY  
phone +39 0722/700070  
fax +39 0722/720017

18-01-2016