

OPEL Meriva II 2010

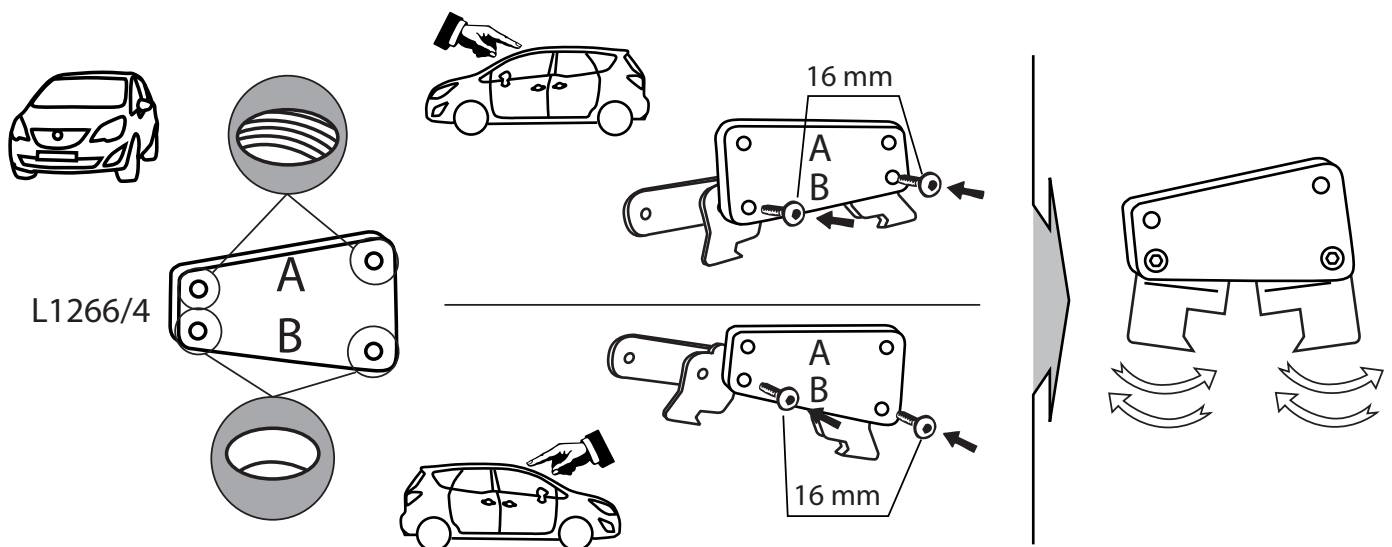
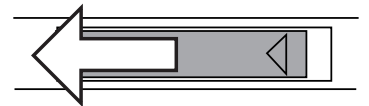
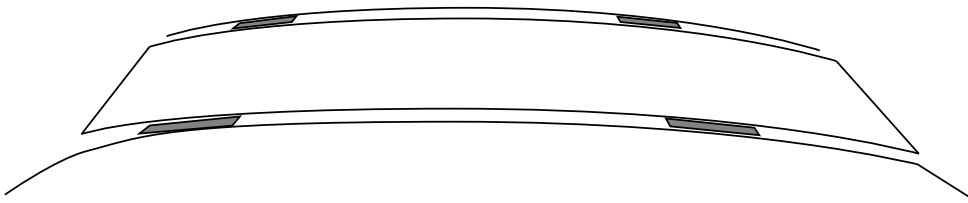
MOCSKT 168

MOCSRROAL008 cm 110

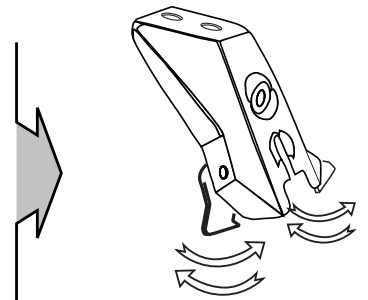
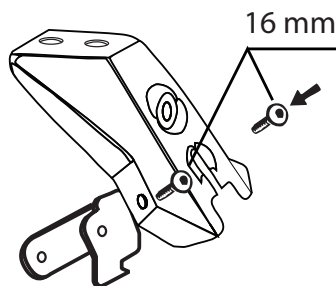
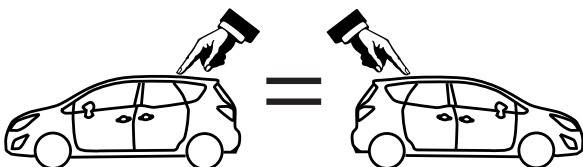
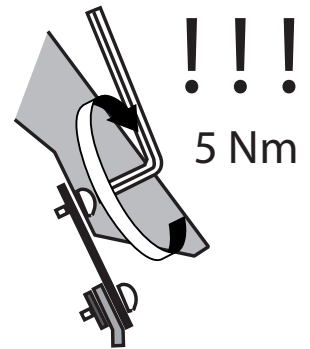
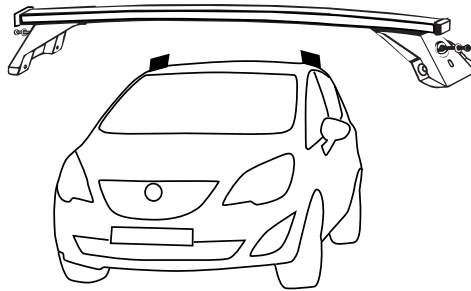
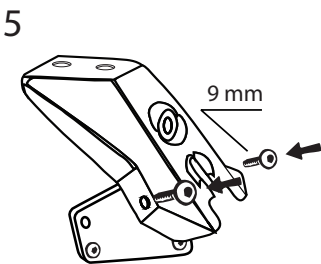
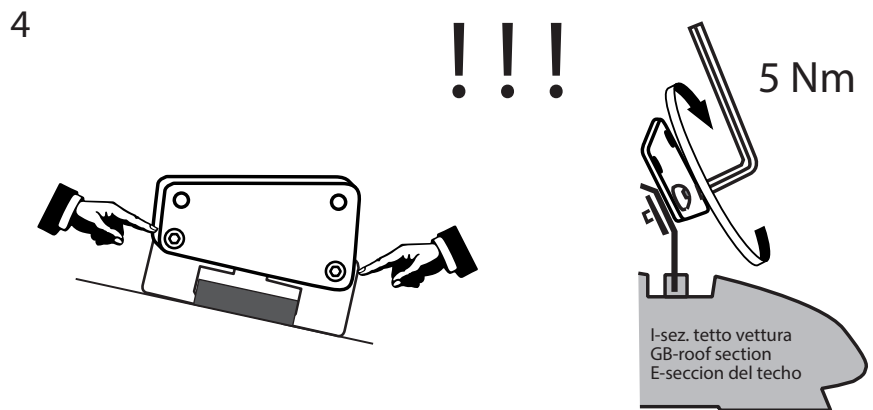
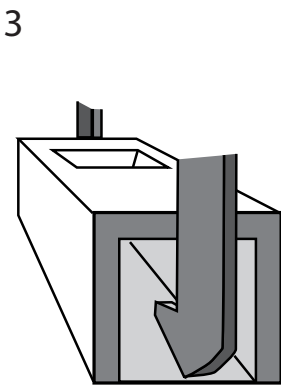
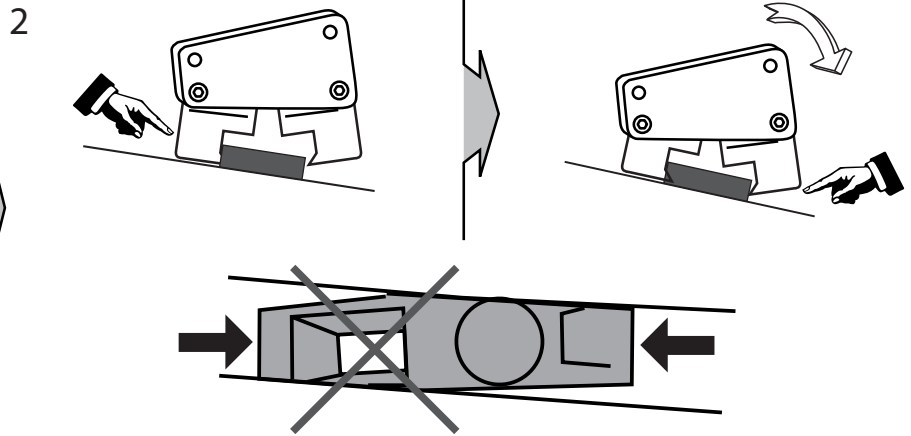
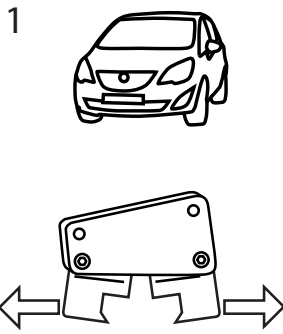
MOCSRROAC012 cm 110



4 - L1259/3		4 - RC20200022		4 - RCVM6X9		9 mm
4 - L1259/4		2 - L1266/4		8 - RCVM6X16		16 mm
				1 - RCBR5 normale		



# MOCSKT 168

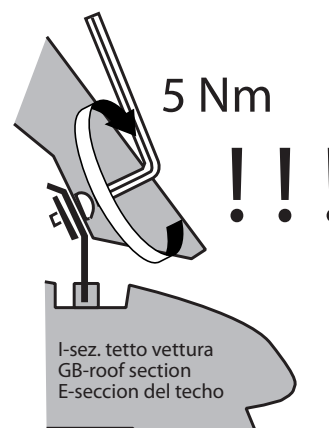
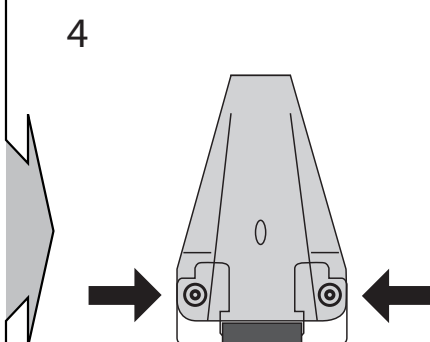
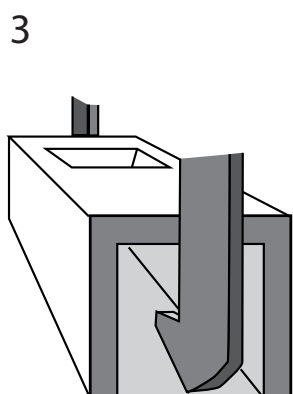
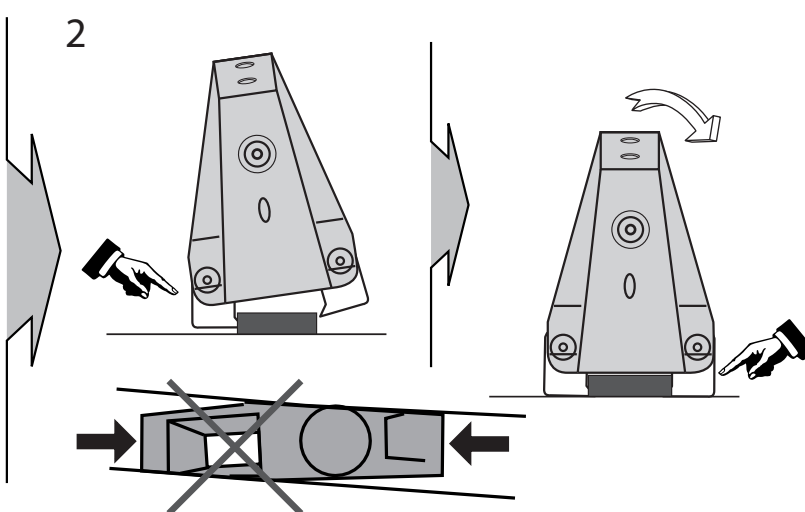
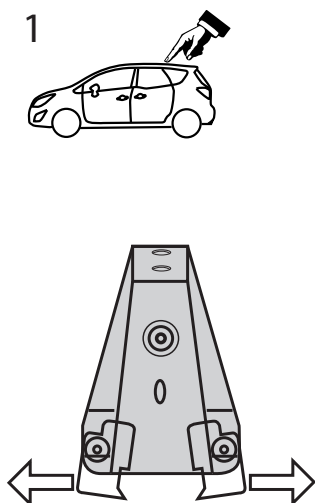
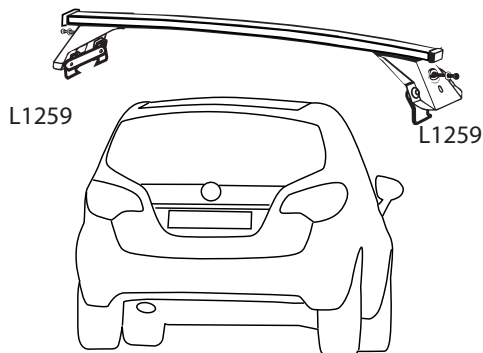


I - utilizzare un panno su cui appoggiare la barra durante le operazioni preliminari, al fine di non danneggiare la carrozzeria  
 GB - use a rag onto which lay the bars during the mounting operations in order to avoid damages.  
 E - utilizar un paño durante el montaje de la barra alfin de evitar daños

# MOCSKT 168



!!!



I-sez. tetto vettura  
 GB-roof section  
 E-seccion del techo



**MODULA**  
 case system

email: modulacs@modulacs.com  
 web site: www.modulacs.com

Modula s.r.l.  
 Loc. Penisola, 20/A  
 61026 Piandimeleto (PU) ITALY  
 phone +39 0722/700070  
 fax +39 0722/720017

18-01-2016