

RENAULT Scénic 09 7 posti (GRAND SCENIC 09 7 posti)











RENAULT Scénic XMod 09 5 posti (SCENIC 09 5 posti)

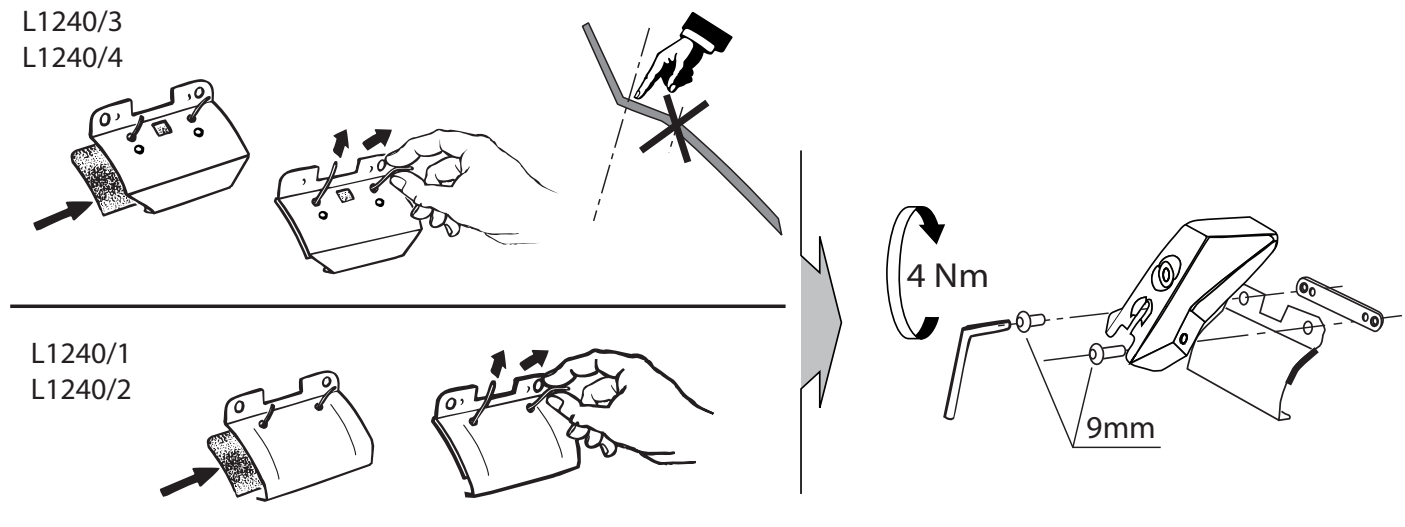
MOCSKT 146



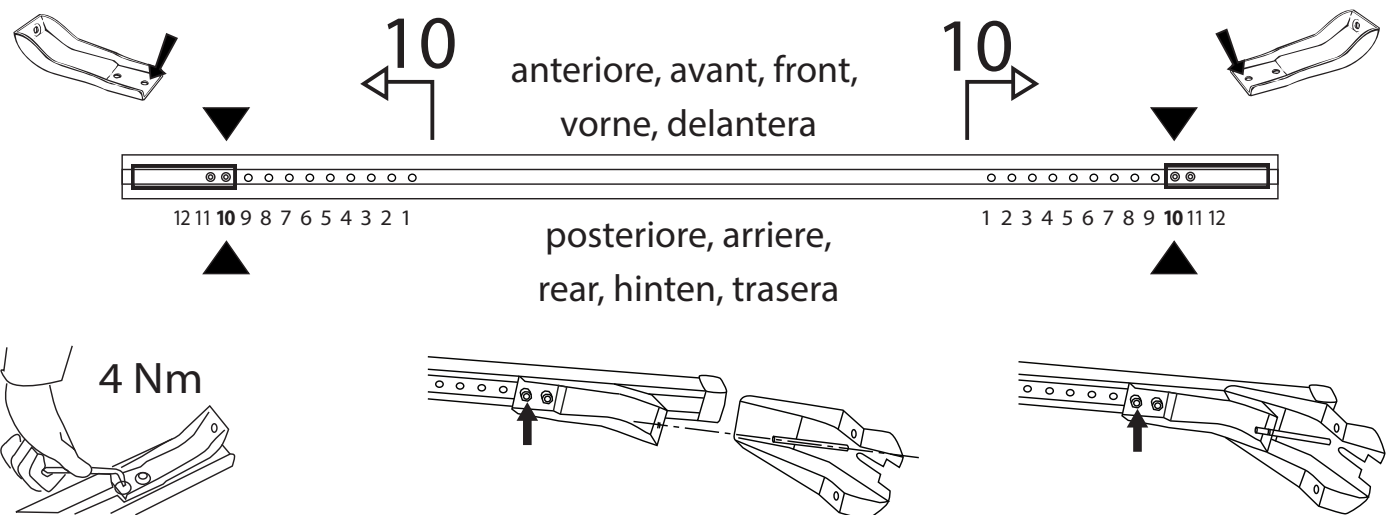
MOCSRR0AC011 cm 124

MOCSRR0AL007 cm 124

| | | | |
|--|---|---|--|
| componenti: | | | |
| 1 - L1240/3 ant sx  | 1 - L1240/1 post dx  | 4 - RC1500/60  | 4 - RC20200026  |
| 1 - L1240/4 ant dx  | 1 - L1240/2 post sx  | 8 - RCVM6X9Q  | 1 - RCBR5  |
| | | 4 - RCVM6X12Q  | 1 - RCBR4  |

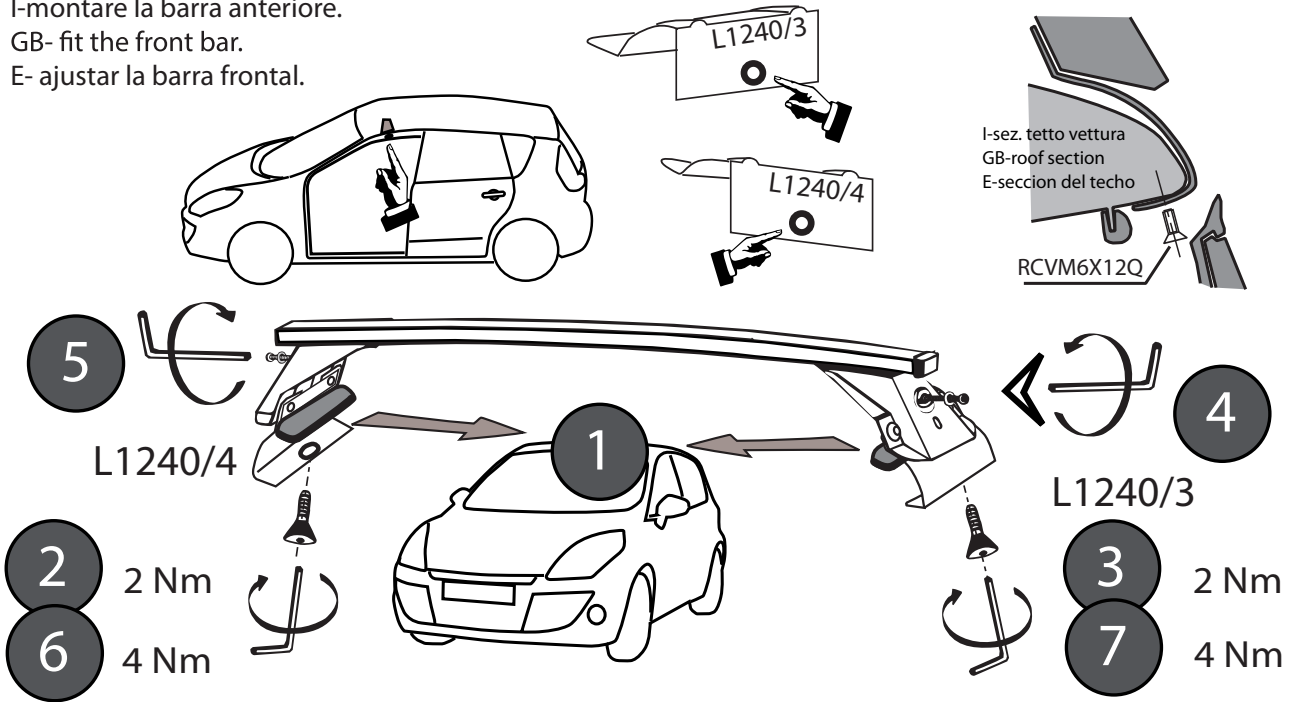


MOCSRR0AC011 cm 124
MOCSRR0AL007 cm 124

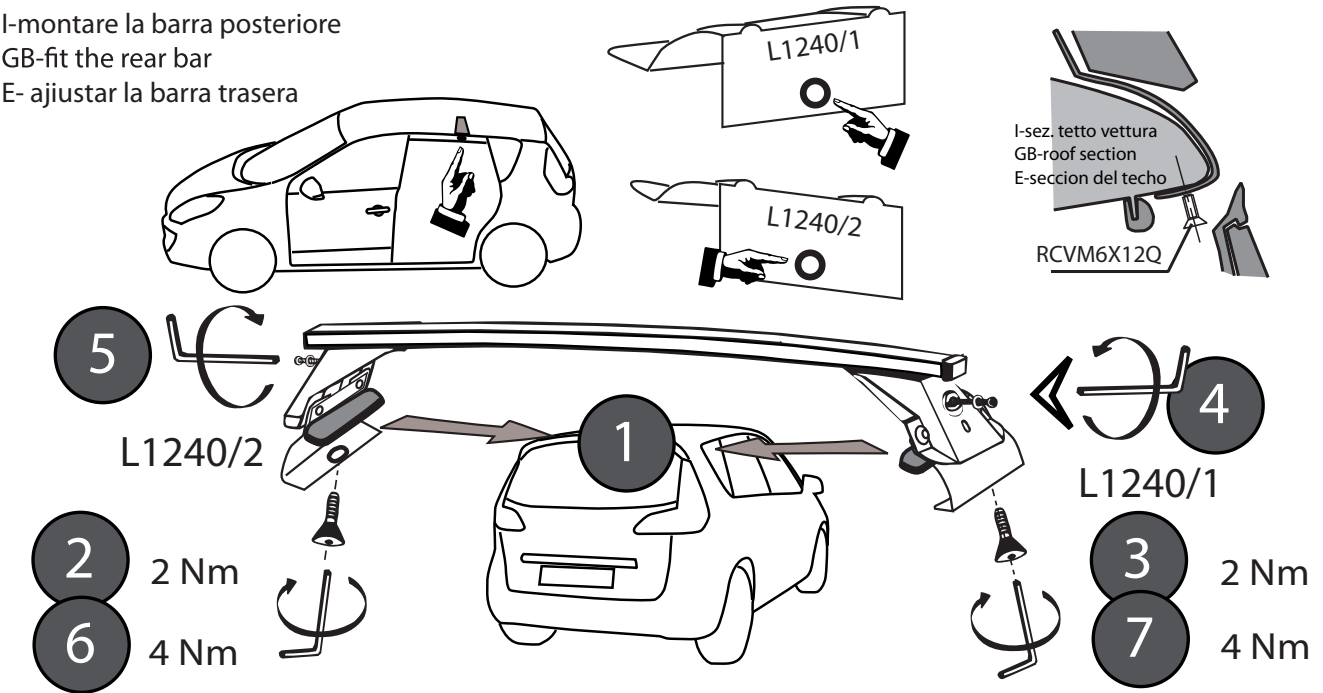


MOCSKT 146

I-montare la barra anteriore.
 GB- fit the front bar.
 E- ajustar la barra frontal.



I-montare la barra posteriore
 GB-fit the rear bar
 E- ajustar la barra trasera



I - Per stringere, usare la chiave come indicato nel disegno. (Non si assumono responsabilità per danni causati dall'impiego di chiavi diverse da quella in dotazione al prodotto).
 F - Pour serrer, utiliser la clé comme indique ci dessous.

GB - To tighten please use the wrench as per the drawing.
 D - Zum Anziehen benutzen Sie bitte den Inbusschlüssel, nur wie auf dem Bild dargestellt.
 E - Para el correcto ajuste, utilizar la llave fija tal y como se indica en la imagen

