

ŠKODA Octavia berlina modello 2008

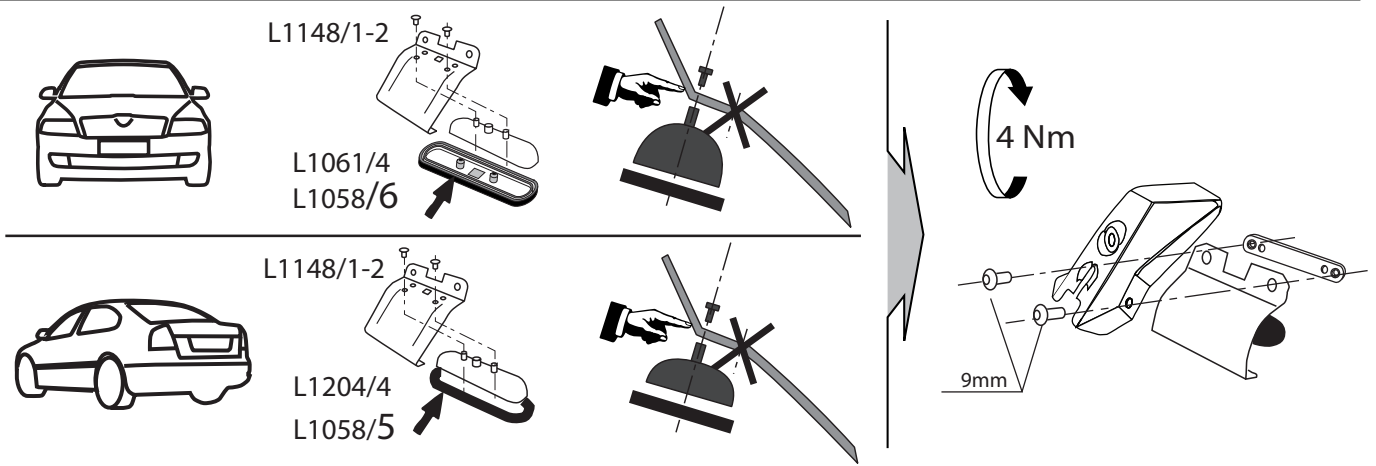
MOCSKT 132

MOCSRR0AC010 cm 110

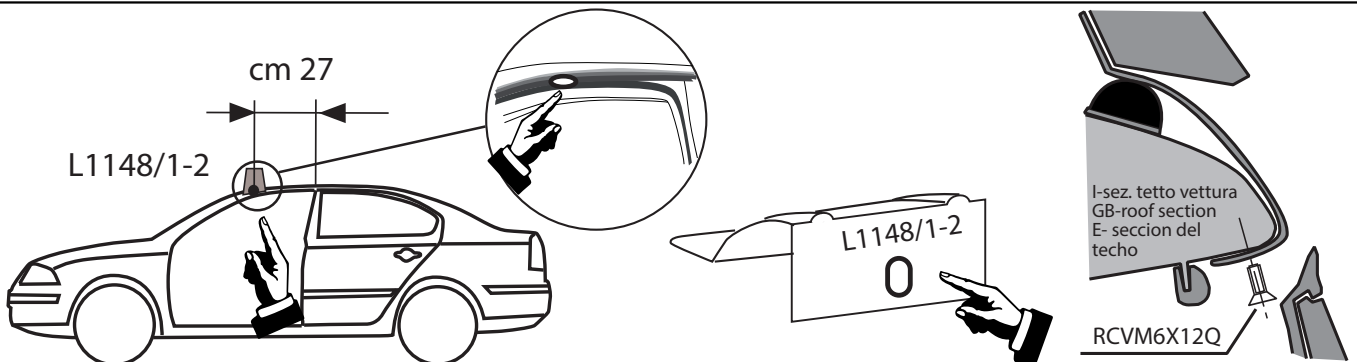
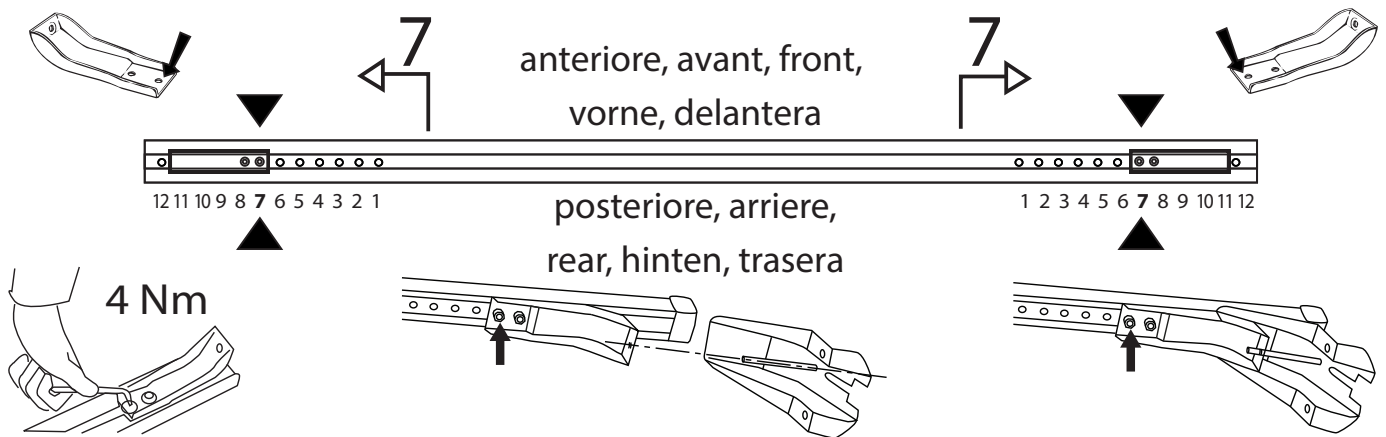
MOCSRR0AL006 cm 110



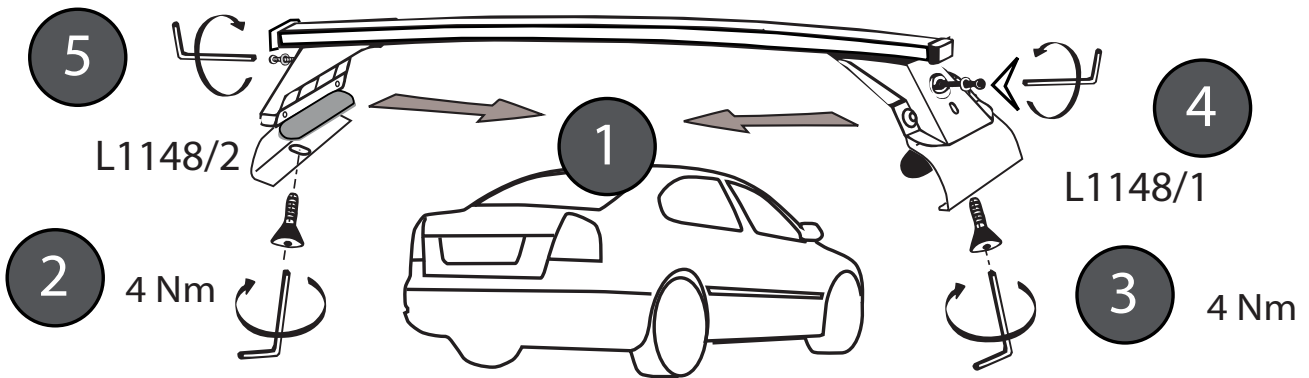
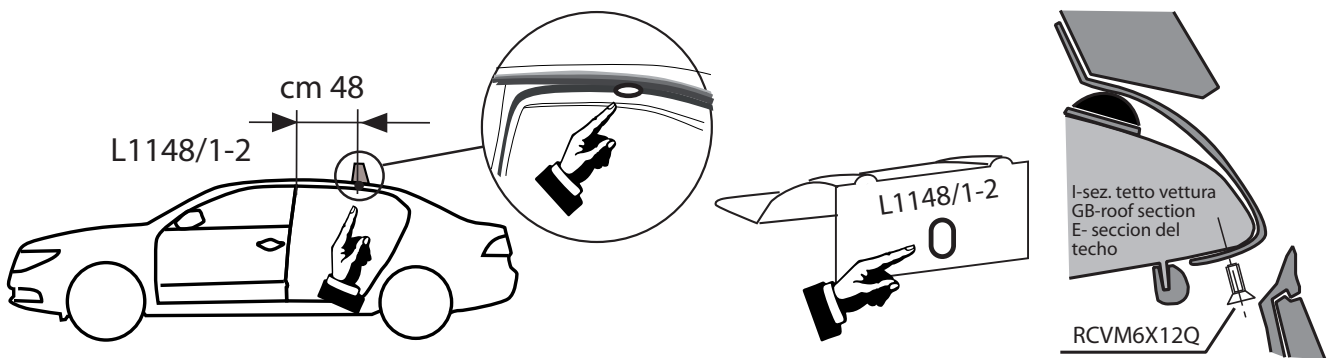
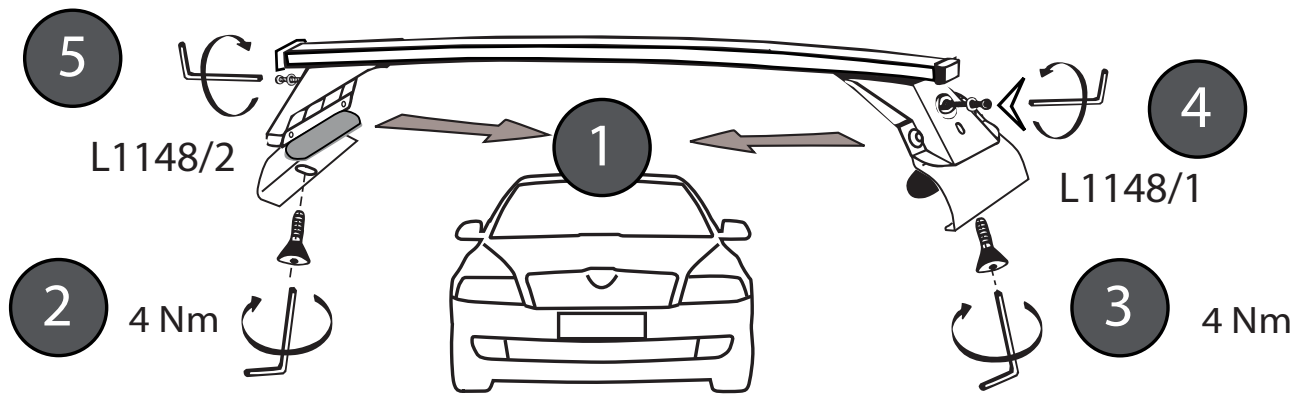
2 - L1148/1 ant. sx post. dx	2 - L1061/4	2 - L1058/6	4 - RC20200026
2 - L1148/2 ant. dx post. sx	2 - L1204/4	4 - RCVM6X12Q	1 - RCBR5
	2 - L1058/5	8 - RCVM6X9Q	1 - RCBR4



MOCSRR0AC010 cm 110
MOCSRR0AL006 cm 110



MOCSKT 132



I - Per stringere, usare la chiave come indicato nel disegno. (Non si assumono responsabilità per danni causati dall'impiego di chiavi diverse da quella in dotazione al prodotto).

F - Pour serrer, utiliser la clé comme indique ci dessous.

GB - To tighten please use the wrench as per the drawing.

D - Zum Anziehen benutzen Sie bitte den Inbusschlüssel, nur wie auf dem Bild dargestellt.

E - Para el correcto ajuste, utilizar la llave fija tal y como se indica en la imagen

