

# FORD Fiesta 2008 3 porte, 5 porte

# MOCSKT 117

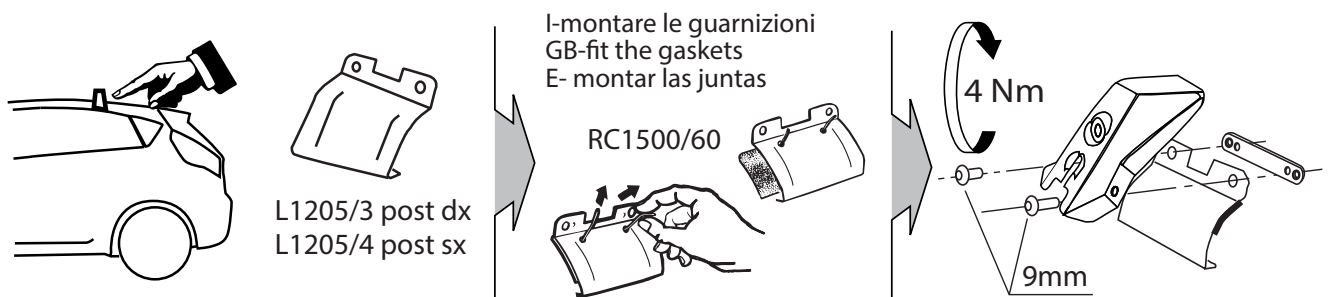
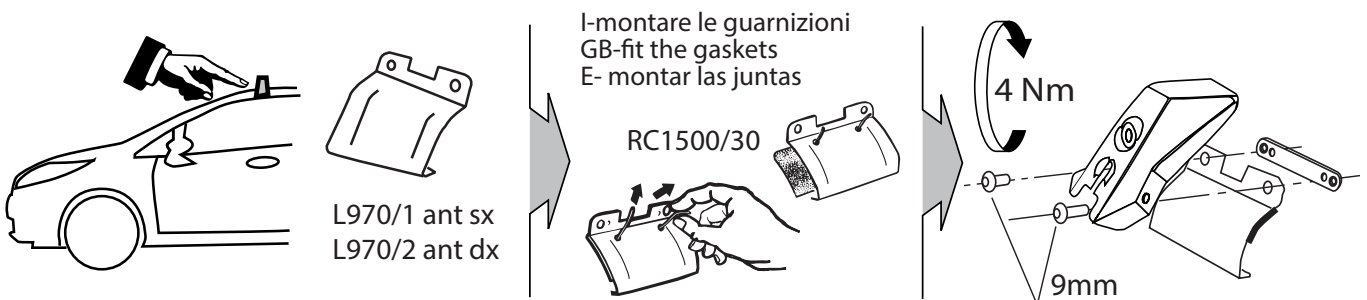
**MOCSRR0AC010 cm 110**

**MOCSRR0AL006 cm 110**



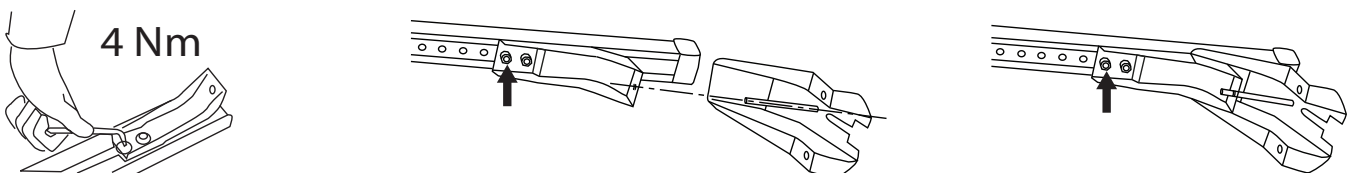
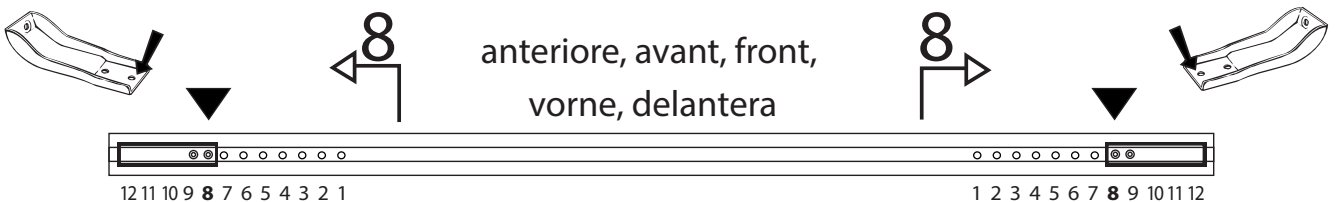
componenti:

1 - L970/1 ant sx		1 - L1205/3 post dx		2 - RC1500/35		8 - RCVM6X9Q	
1 - L970/2 ant dx		1 - L1205/4 post sx		2 - RC1500/60		4 - RC20200026	
				1 - inseritore		1 - RCBR5	

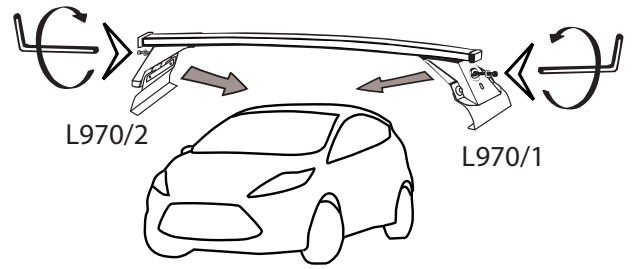
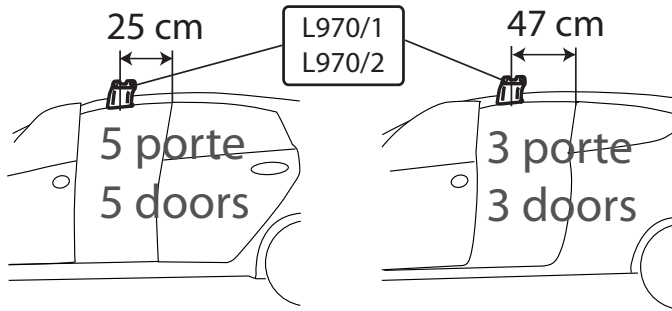


**MOCSRR0AC010 cm 110**

**MOCSRR0AL006 cm 110**

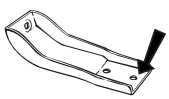


# MOCSKT 117



**MOCSRROAC010 cm 110**

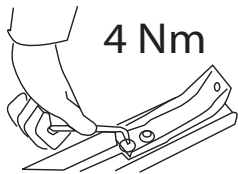
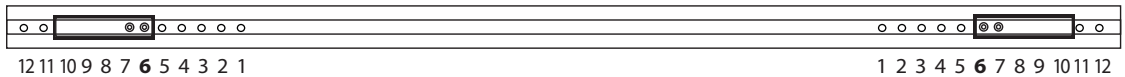
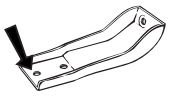
**MOCSRROAL006 cm 110**



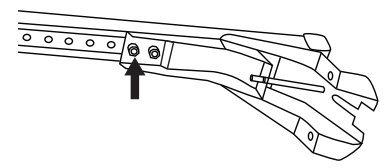
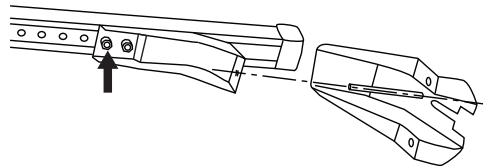
6

posteriore, arriere,  
rear, hinten, trasera

6

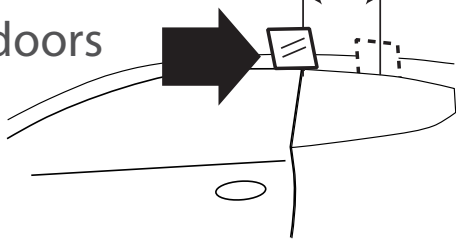


4 Nm



3 porte  
3 doors

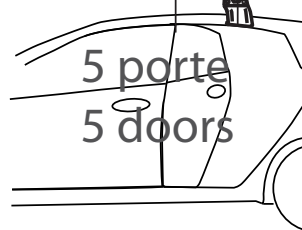
28 cm



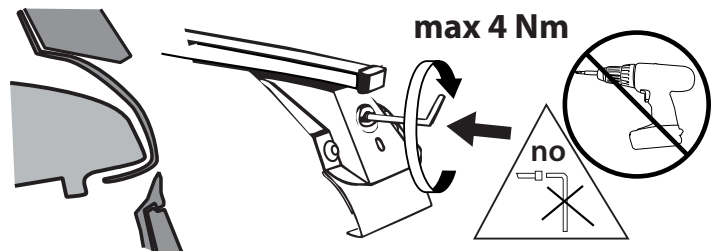
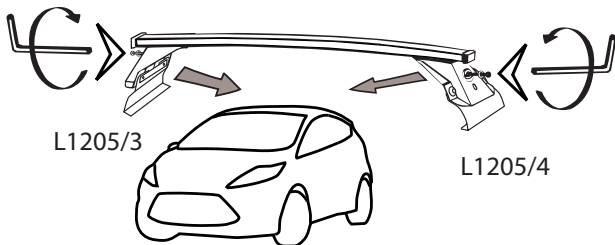
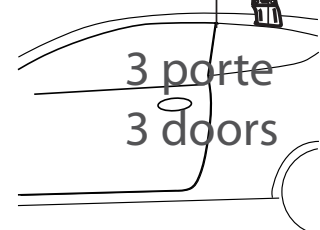
50 cm

L1205/3  
L1205/4

28 cm



3 porte  
3 doors



**MODULA**  
case system

email: [modulacs@modulacs.com](mailto:modulacs@modulacs.com)  
web site: [www.modulacs.com](http://www.modulacs.com)

Modula s.r.l.  
Loc. Penisola, 20/A  
61026 Piandimeleto (PU) ITALY  
phone +39 0722/700070  
fax +39 0722/720017

18-01-2016