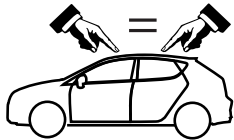
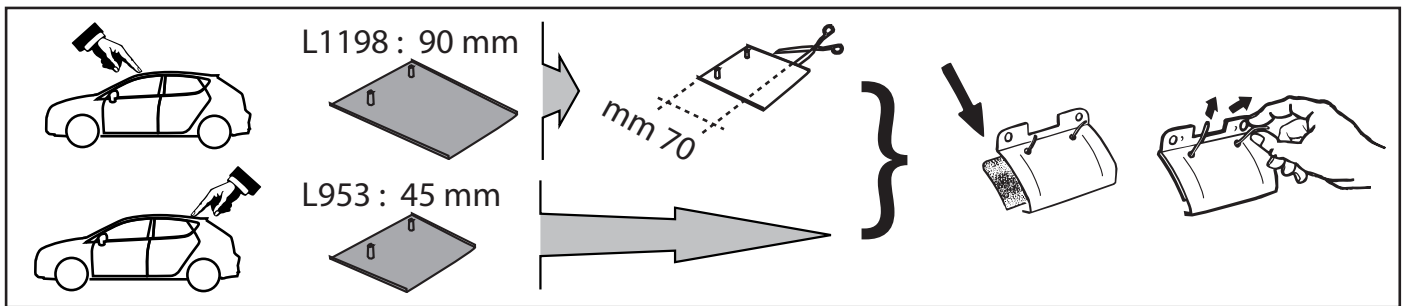


**MOCSRR0AC010 cm 110**

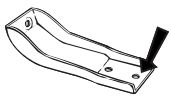
**MOCSRR0AL006 cm 110**



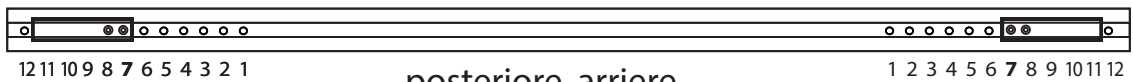
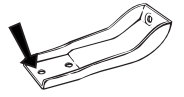
1 - L1198/1 ant sx		2 - L1297/5		4 - RC20200026	
1 - L1198/2 ant dx		2 - RC1500/45		2 - RCRD10Q	
1 - L953/3 post dx		2 - RC1500/95		1 - RCBR5 normale	
1 - L953/4 post sx		4 - RCVM6X9Q		2 - RCVM6X16Q	
		4 - RCVM6X13Q		1 - RCBR4	



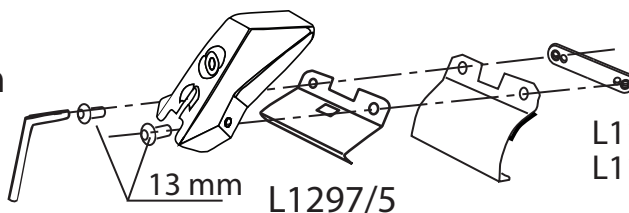
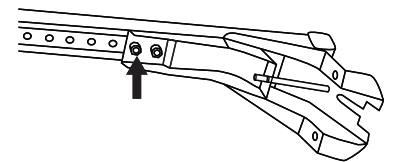
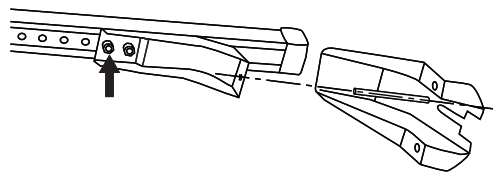
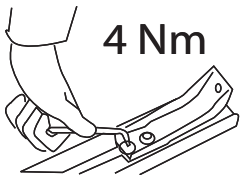
**MOCSRR0AC010 cm 110**  
**MOCSRR0AL006 cm 110**



anteriore, avant, front,  
vorne, delantera



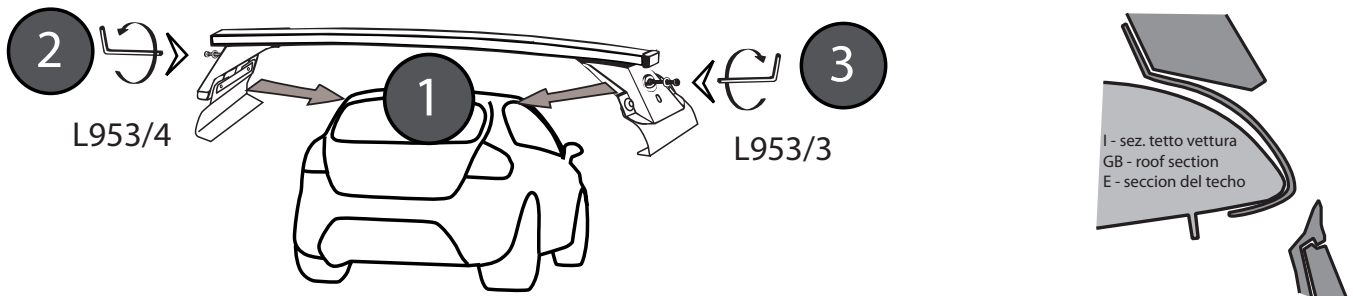
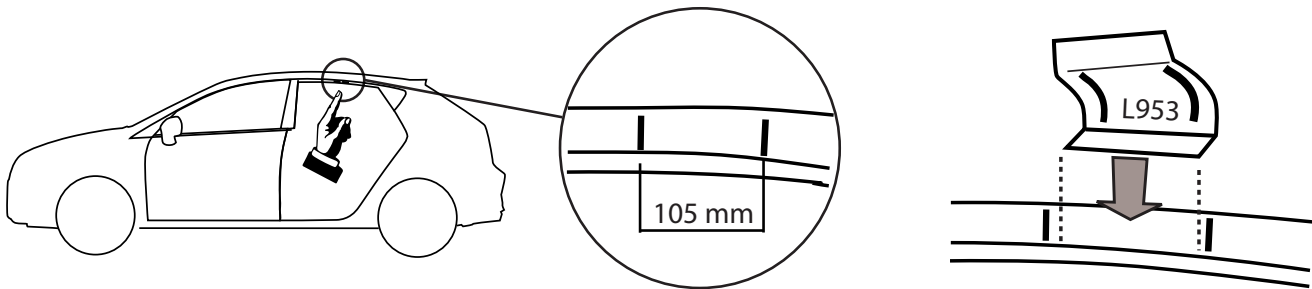
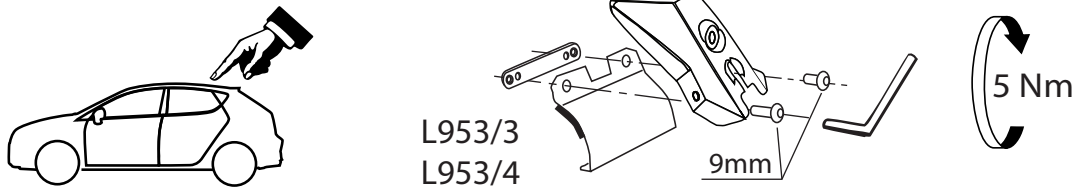
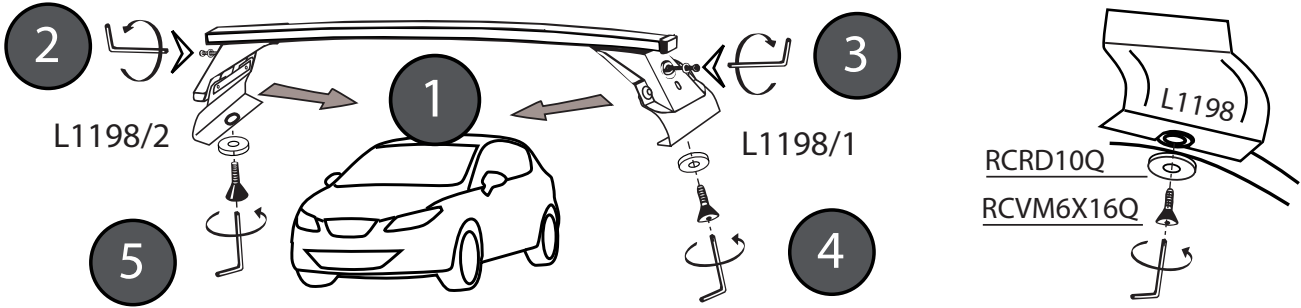
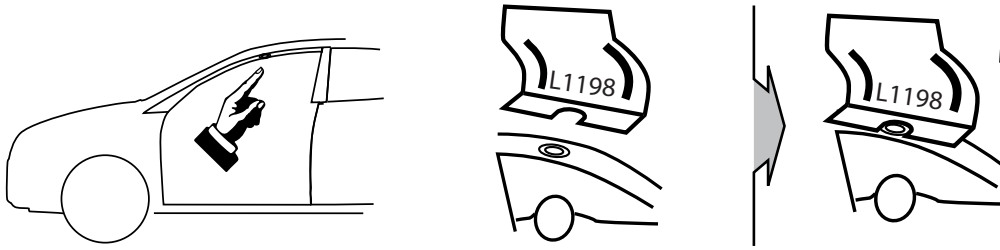
posteriore, arriere,  
rear, hinten, trasera



L1198/1  
L1198/2

L1297/5

# MOCSKT 111



I - Per stringere, usare la chiave come indicato nel disegno. (Non si assumono responsabilità per danni causati dall'impiego di chiavi diverse da quella in dotazione al prodotto).  
F - Pour serrer, utiliser la clé comme indiqué ci dessous.

GB - For tightening, please use the wrench as per the drawing.  
D - Zum Anziehen benutzen Sie bitte den Inbusschlüssel, nur wie auf dem Bild dargestellt.  
E - Para el correcto ajuste, utilizar la llave fija tal y como se indica en la imagen

