

FIAT 500 model 2007

FIAT 500C (cabrio) model 2009

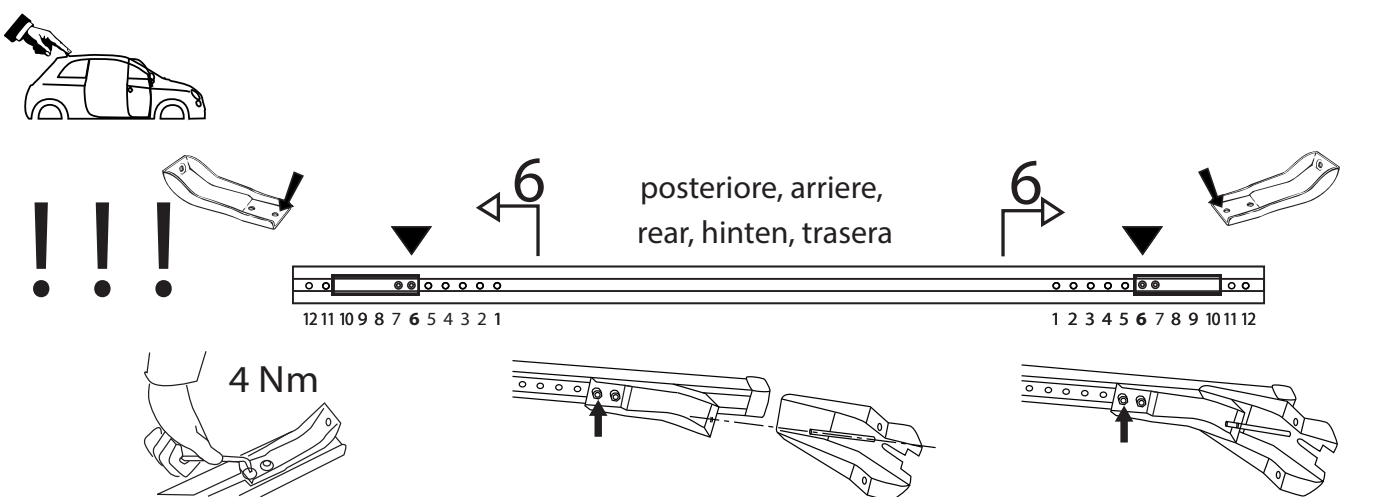
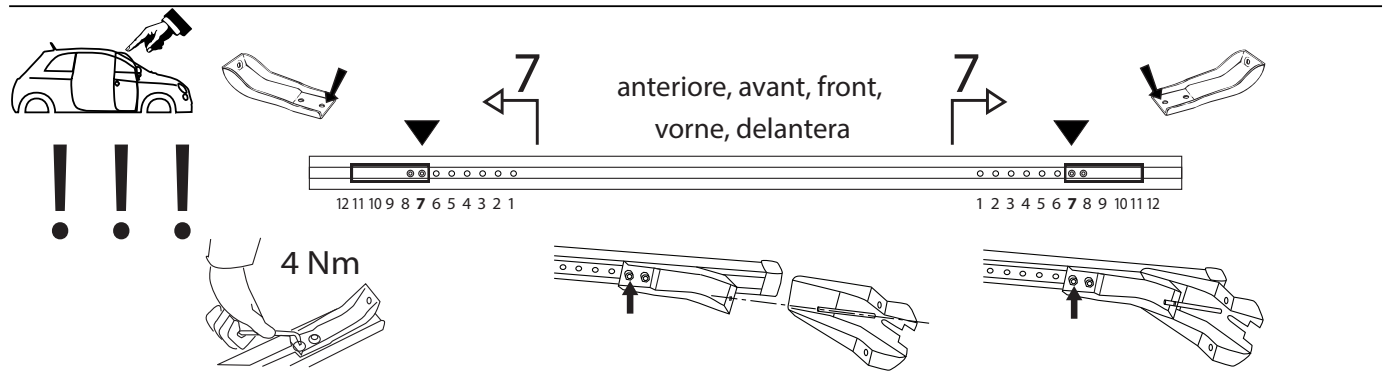
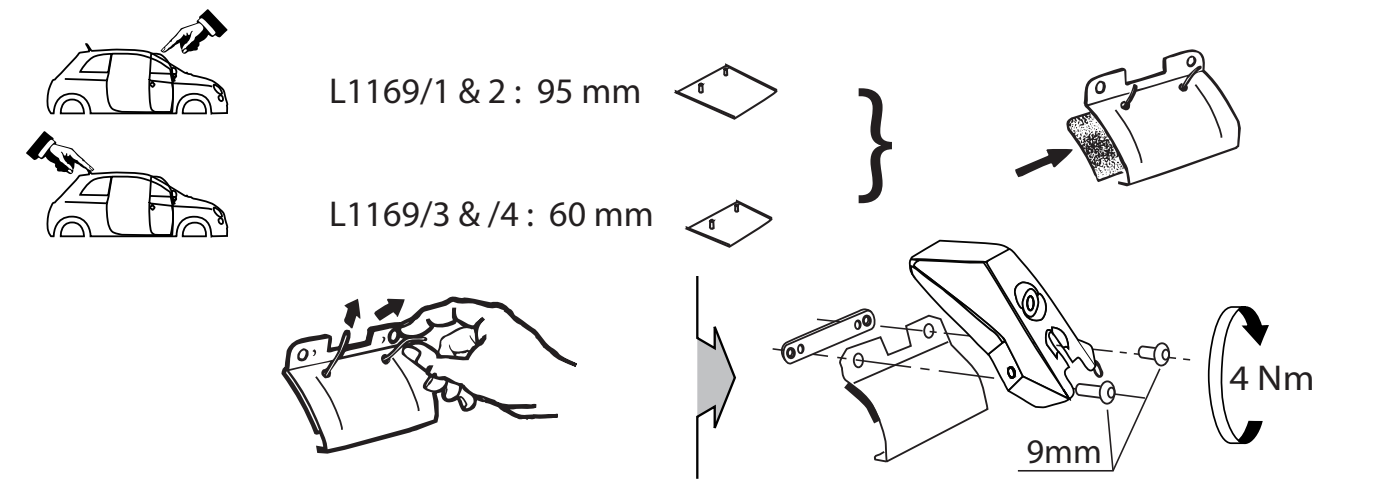
MOCSKT 087



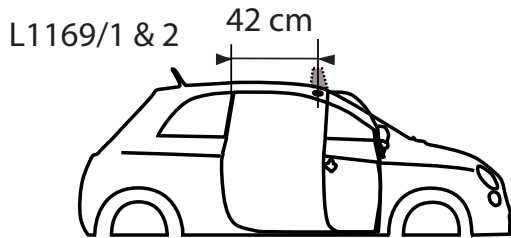
MOCSRROAC010 cm 110
MOCSRROAL006 cm 110



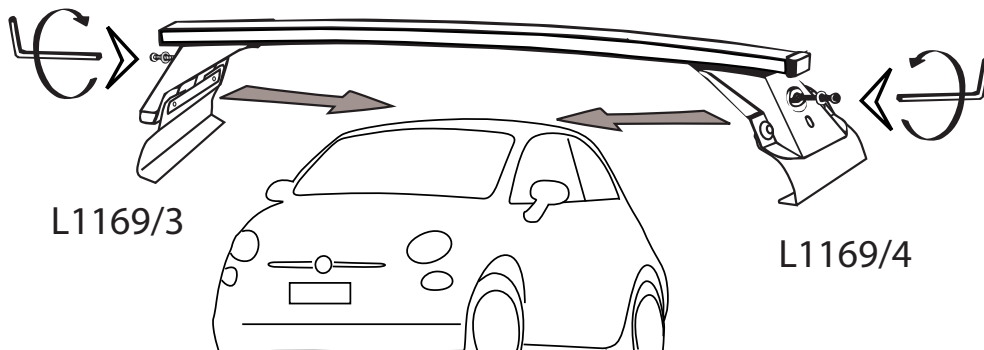
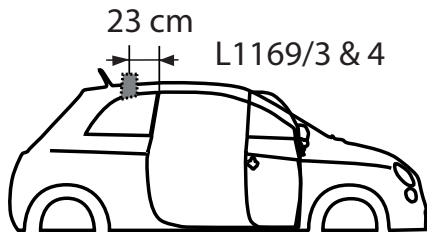
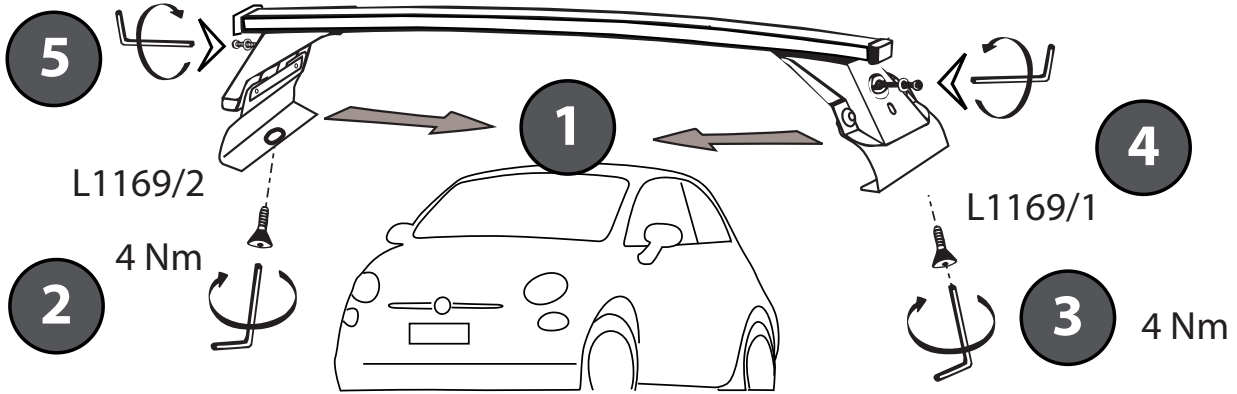
1 - L1169/1 ant. sx		2 - RC1500/95 ant.		4 - RC20200026	
1 - L1169/2 ant.dx		2 - RC1500/60 post.		1 - RCBR5	
1 - L1169/3 post. dx.		8 - RCVM6X9Q		1 - RCBR4	
1 - L1169/4 post. sx.		2 - RCVM6x16TSQ			



MOCSKT 087



RCVM6x16TSQ



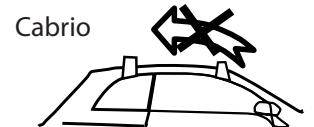
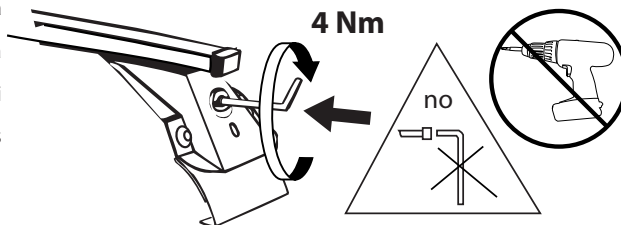
I- Per stringere, usare la chiave come indicato nel disegno. (Non si assumono responsabilità per danni causati dall'impiego di chiavi diverse da quella in dotazione al prodotto).

F- Pour serrer, utiliser la cle comme indique ci dessous.

GB-For tightening, please use the wrench as per the drawing.

D- Zum Anziehen benutzen Sie bitte den Inbusschlüssel, nur wie auf dem Bild dargestellt.

E- Para el correcto ajuste, utilizar la llave fija tal y como se indica en la imagen.



MODULA
case system

email: modulacs@modulacs.com
web site: www.modulacs.com

Modula s.r.l.
Loc. Penisola, 20/A
61026 Piandimeleto (PU) ITALY
phone +39 0722/700070
fax +39 0722/720017

18-01-2016