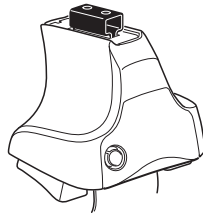
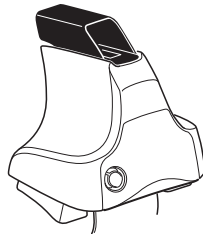
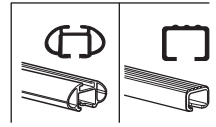


# Kit 1473

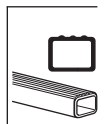
TOYOTA Auris, 3-dr Hatchback, 06-12



**754** Rapid System  
**480R** Rapid Traverse (North America)



**480** Traverse (North America)



xx kg / xx lbs + 7 kg / 15,4 lbs =
   
 3 kg / 6,6 lbs
   
**Max. 40 kg**
  
**Max. 88 lbs**

80 km/h 130 km/h
   
 50 Mph 80 Mph
   
 40 km/h 25 Mph
   
**km/h Mph**

**THULE**
  
  
**instructions** Kit XXXX
   
**THULE**

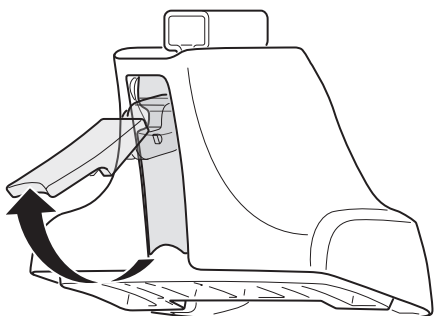
**x1**
  
  
**x4**
  
**754 Rapid System**
  
  
**x4**
  
**480R Rapid Traverse (North America)**
  
  
**x4**
  
**754 Rapid System**
  
**480R Rapid Traverse (North America)**

**x1**
  
  
**x4**
  
  
**x4**
  
**480 Traverse (North America)**

**x2**
  
**x2** 23 mm
   
**x2**
  
**x4**
  
**x4**
  
**x1** 17 mm
   
**x2** 23 mm
   
**x2**
  
**x2**
  
**x4**
  
**x2**
  
**x2**
  
**x2**
  
**x2**
  
**x2**
  
**x2**
  
**(North America)**

**887 x4**
  
**266 x2**
  
**267 x2**
  
  
**x1**

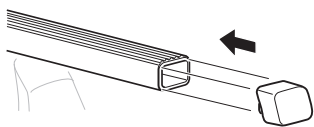
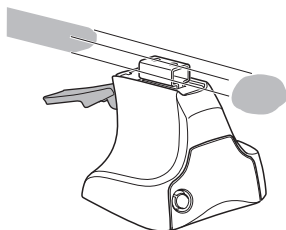
1



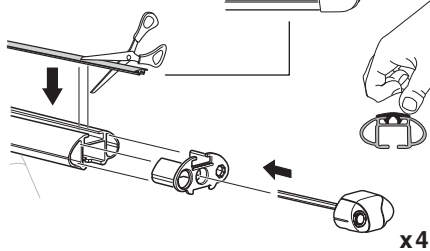
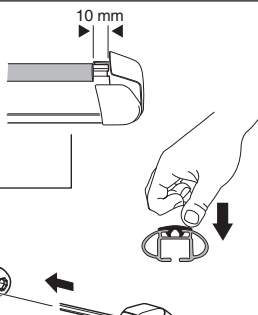
2



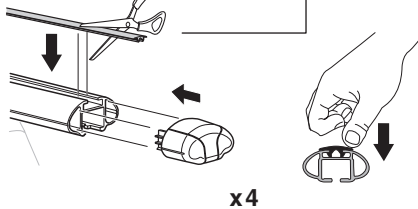
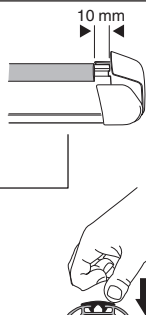
754 Rapid System  
480R Rapid Traverse  
(North America)



x4



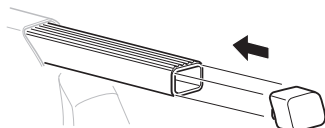
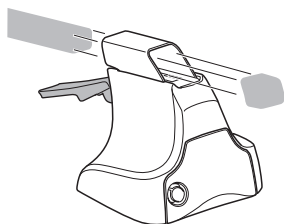
x4



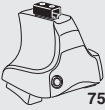
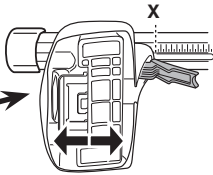
x4



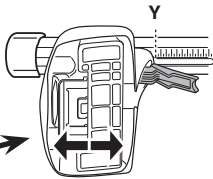
480 Traverse  
(North America)



x4

**3****754** Rapid System

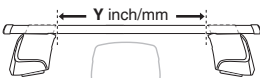
TOYOTA Auris, 3-dr Hatchback, 06-12

**X****36,5**

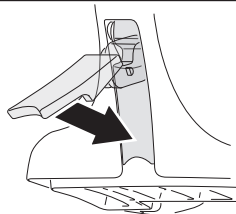
TOYOTA Auris, 3-dr Hatchback, 06-12

**Y****34,5****3****480R** Rapid Traverse**480** Traverse**(North America)**

TOYOTA Auris, 3-dr Hatchback, 06-12

**X inch****X mm****40"****1016 mm**

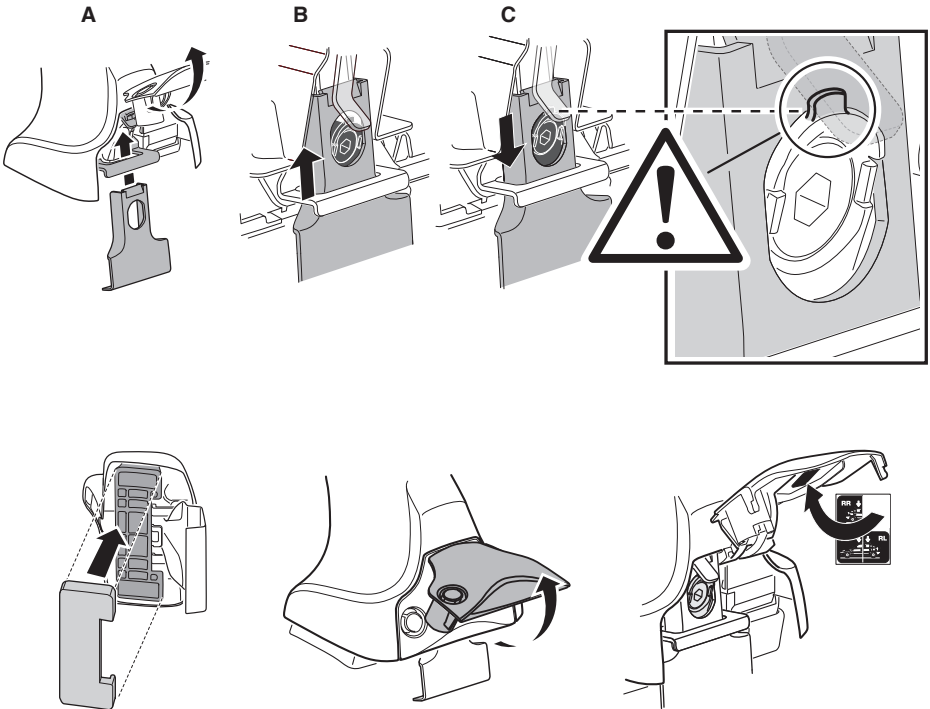
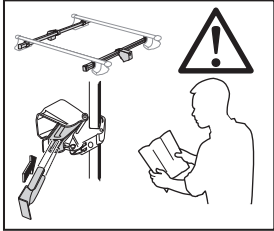
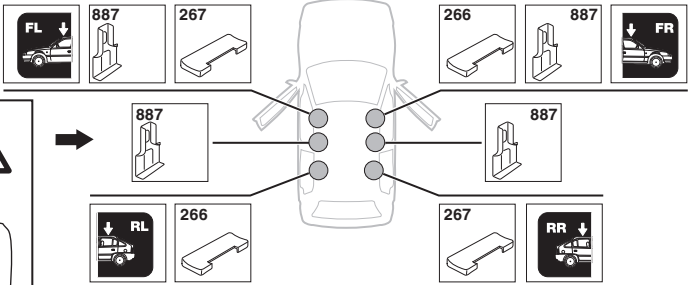
TOYOTA Auris, 3-dr Hatchback, 06-12

**Y inch****Y mm****39 1/4"****996 mm****4**

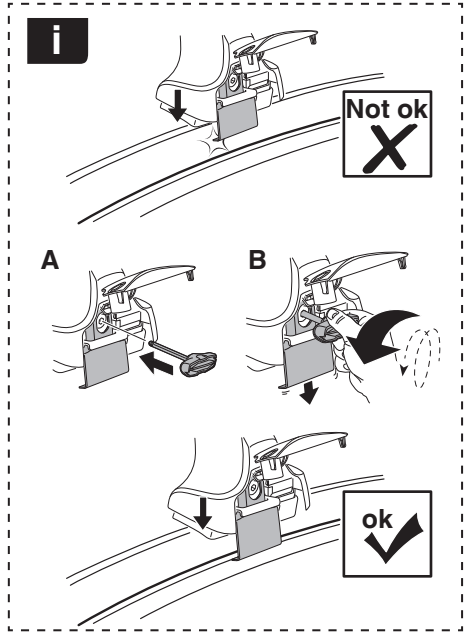
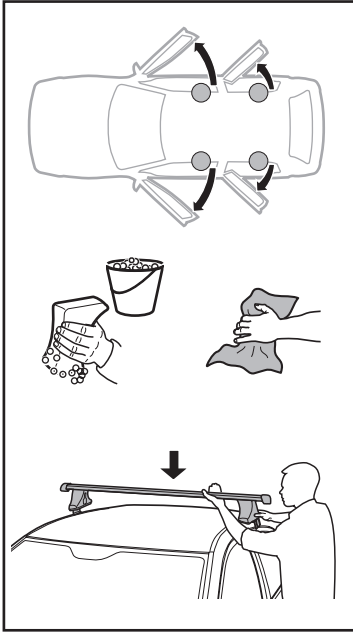
# 5

TOYOTA Auris, 3-dr Hatchback, 06-12

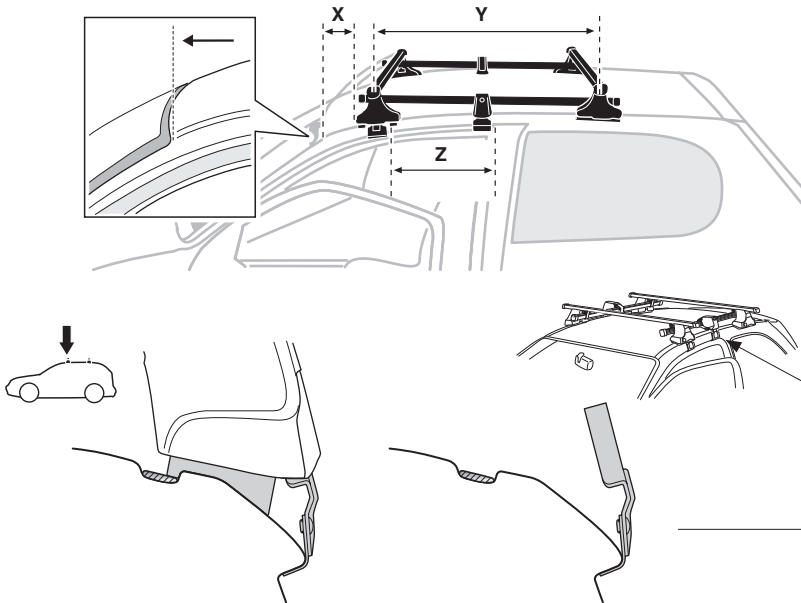
SRA



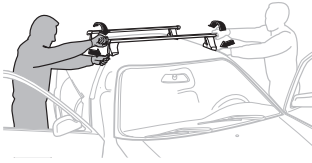
6



	X mm	Y mm	Z mm	X inch	Y inch	Z inch
TOYOTA Auris, 3-dr Hatchback, 06-12	310 mm	600 mm	365 mm	12 1/4"	23 5/8"	14 3/8"



7



GB/US	Tighten alternately
D	Die Schrauben abwechselnd anziehen
F	Serrer alternativement chaque côté
NL	Afwisselend aan de linker- en de rechterkant aandraaien
I	Alternare il serraggio delle viti
E	Apretar alternativamente
PT	Aperte alternadamente
S	Dra åt växelvis
FIN	Kierrä vuorotellen
EST	Pinguldage vaheldumisi
LAT	Pielveiciet pamišus
LIT	Užsukinėkite pakaitomis
PL	Śruby dokręcaj naprzemiennie
RU	Затягивайте попеременно

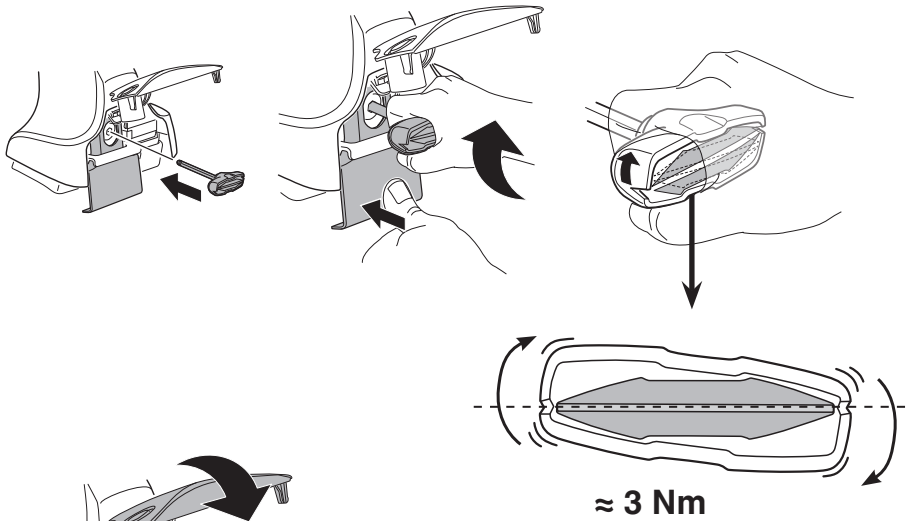
CZ	Pokręťta bagażníka dokręcaj naprzemiennie.
SK	Dofahajte striedavo
SLO	Privijajte izmenično.
HR	Naizmjenočno zategnite
HU	Egymástól függetlenül szorítandó
GR	Σφιγίγες ενολάξ
TR	Dönüşümlü sıkın

中文 交替拧紧

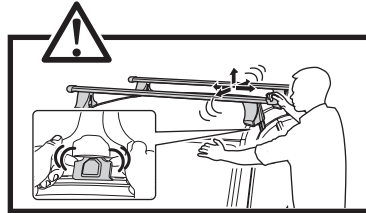
한국어 번갈아 가며 조이십시오.

日本語 交互に締め付けてください。

ไทย ชันในแบบสลับ



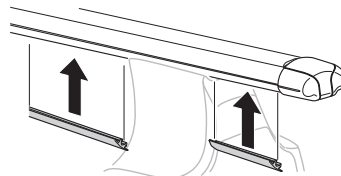
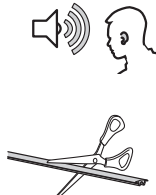
≈ 3 Nm

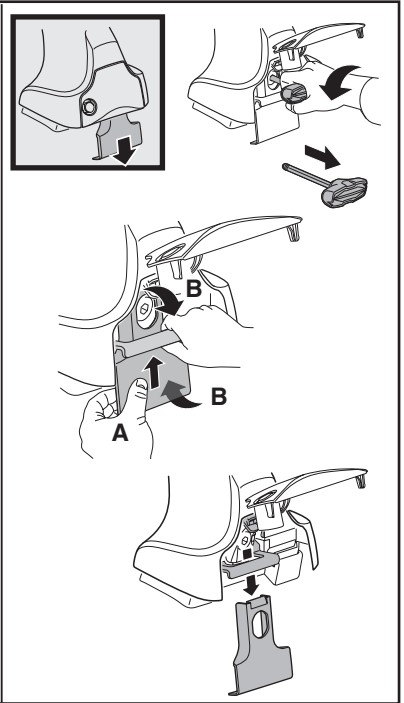
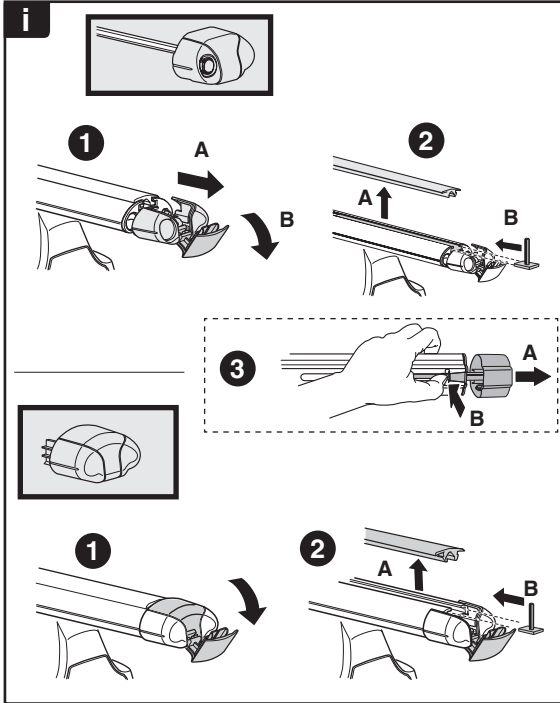
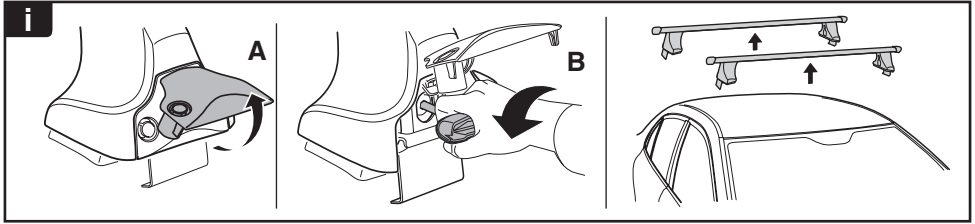


8

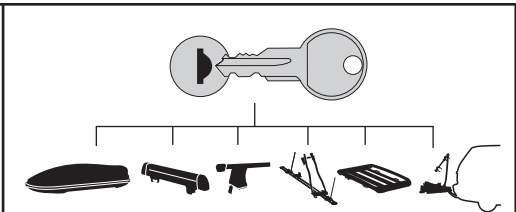


x1  
17 mm

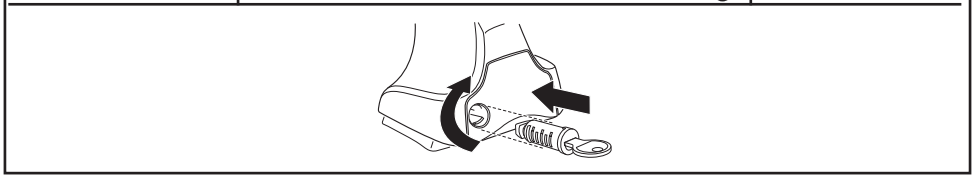




**THULE**  
SWEDEN  
**ONE  
KEY  
SYSTEM**



		(x4)
		(x6)
		(x8)
NA		(x10)
EUR		(x12)
ASIA		



WW ▶ Thule Sweden AB, Box 69, 330 33 Hillerstorp, SWEDEN  
NA ▶ Thule Inc., 42 Silvermine Road, Seymour, Connecticut 06483, USA

info@thule.com  
customer.service@thule.com

www.thule.com