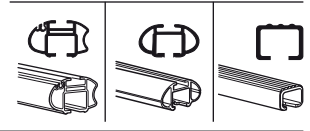
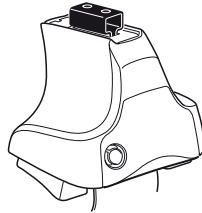


Kit 1085

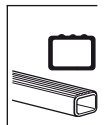
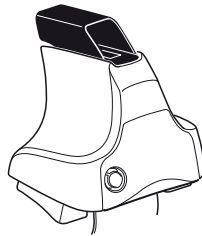
TOYOTA 4 Runner, 3-dr SUV, 90-95

TOYOTA 4 Runner, 5-dr SUV, 90-95

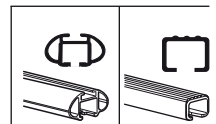
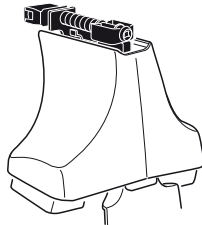
480R
754



480



750



xx kg
 xx lbs
 + 7 kg / 15,4 lbs
 = 3 kg / 6,6 lbs

Max. 75kg
Max. 165 lbs

80 km/h 130 km/h
 50 Mph 80 Mph
 40 km/h 25 Mph
km/h Mph

THULE

Kit XXXX
 instructions

x1

x4

x4

x4

480R/754

x1

x4

x4

x4

480

x1

x4

x4

750

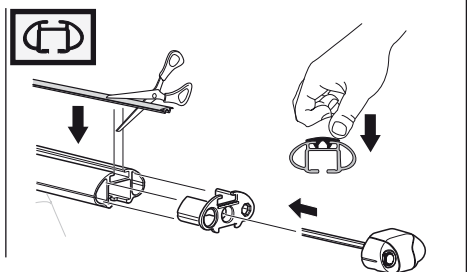
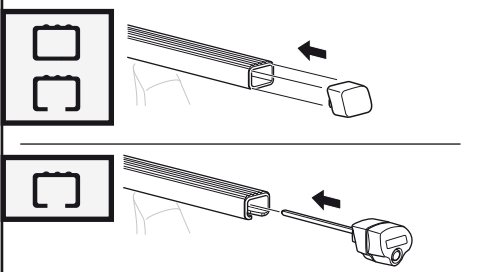
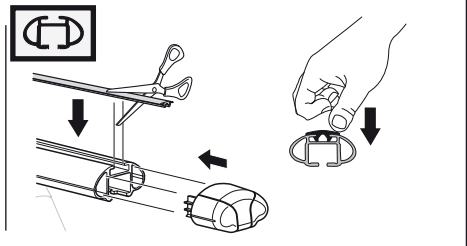
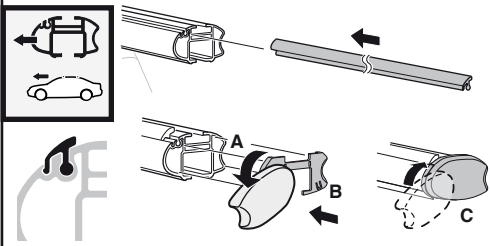
x2 x2 x2 x4	x2	x2 x2 x4 x4	x2 x2	x2
----------------------	----	----------------------	----------	----

173 x4

45 x4

x1

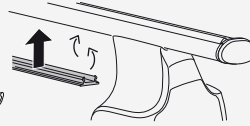
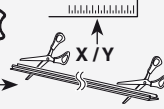
Kit



3



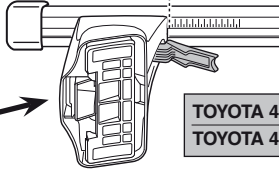
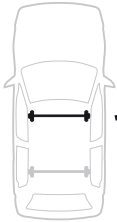
754



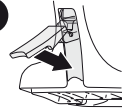
750



1

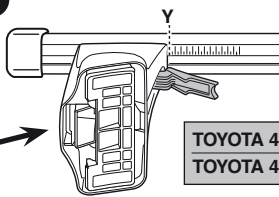


2

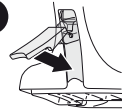


	X
TOYOTA 4 Runner, 3-dr SUV, 90-95	31,5
TOYOTA 4 Runner, 5-dr SUV, 90-95	31,5

1



2



	Y
TOYOTA 4 Runner, 3-dr SUV, 90-95	30,5
TOYOTA 4 Runner, 5-dr SUV, 90-95	30,5

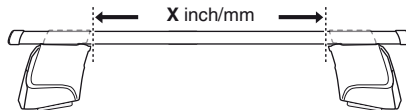


480R

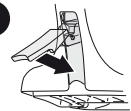


480

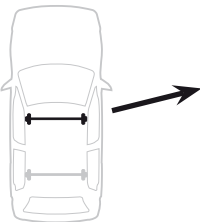
1



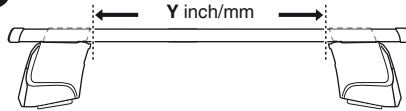
2



	X inch	X mm
TOYOTA 4 Runner, 3-dr SUV, 90-95	38"	966 mm
TOYOTA 4 Runner, 5-dr SUV, 90-95	38"	966 mm



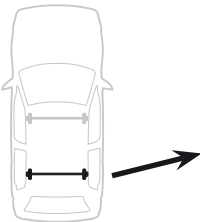
1



2

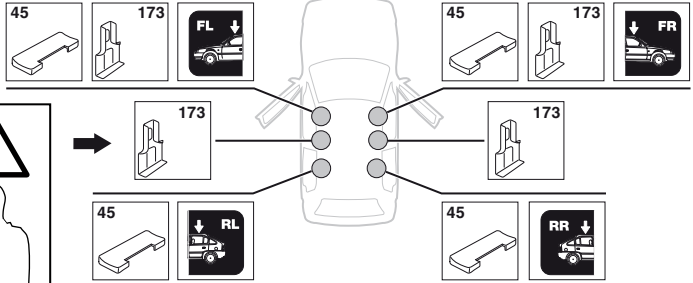


	Y inch	Y mm
TOYOTA 4 Runner, 3-dr SUV, 90-95	37 ⁵ / ₈ "	956 mm
TOYOTA 4 Runner, 5-dr SUV, 90-95	37 ⁵ / ₈ "	956 mm

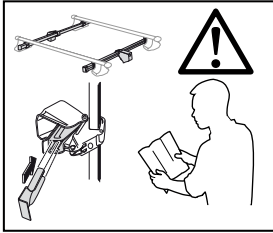


4

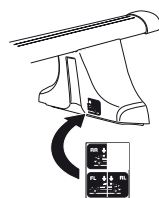
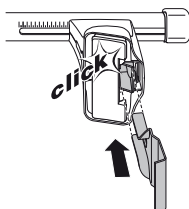
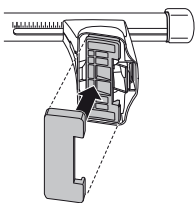
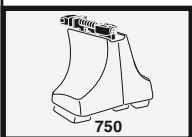
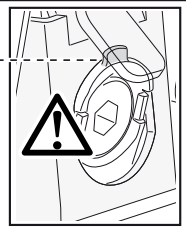
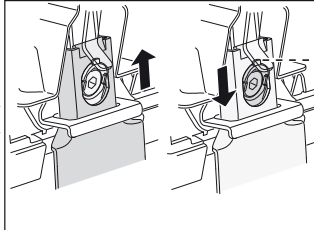
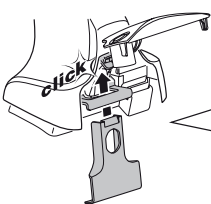
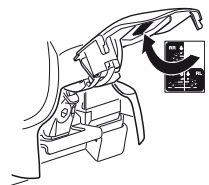
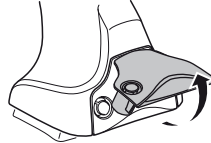
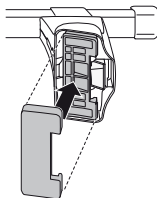
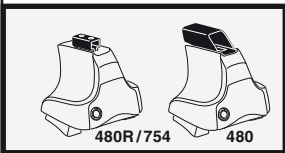
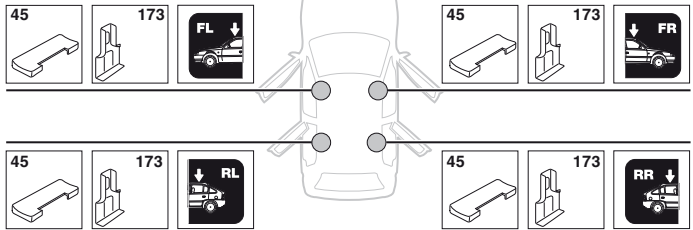
TOYOTA 4 Runner, 3-dr SUV, 90-95



SRA



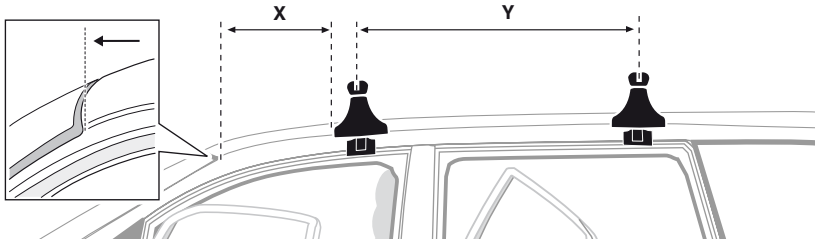
TOYOTA 4 Runner, 5-dr SUV, 90-95



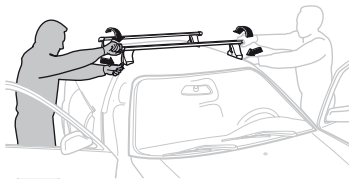
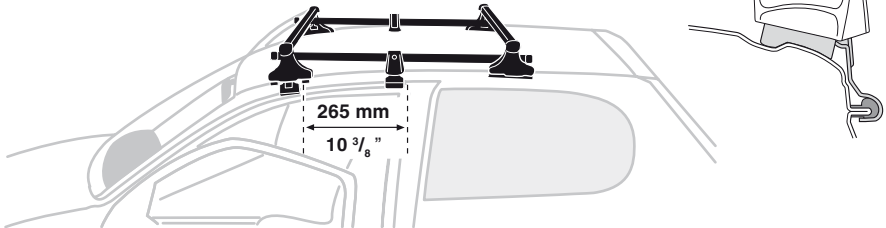
5



	X mm	Y mm	X inch	Y inch
TOYOTA 4 Runner, 3-dr SUV, 90-95	200 mm	700 mm	7 7/8" "	27 1/2" "
TOYOTA 4 Runner, 5-dr SUV, 90-95	300 mm	700 mm	11 3/4" "	27 1/2" "



TOYOTA 4 Runner, 3-dr SUV, 90-95



GB/US Tighten alternately

D Die Schrauben abwechselnd anziehen

F Serrer alternativement chaque côté

NL Afwisselend aan de linker- en de rechterkant aandraaien

I Alternare il serraggio delle viti

E Serrare alternativamente

PT Aperte alternadamente

S Dra åt växelvis

FIN Kierrä vuorotellen

EST Pinguldage vaheldumisi

LAT Pielvelciēt pamīšus

LIT Užsukinėkite pakaitomis

PL Śruby dokręcaj naprzemiennie

RU Затягивайте попеременно

CZ Pokręťta bagażníka dokręcaj dokręcaj naprzemiennie.

SK Doťahujte striedavo

SLO Privijajte izmenično.

HR Naizmjenično zategnite

HU Egymástól függetlenül szorítandó

GR Σφίγγετε εναλλάξ

TR Dönüşümlü sıkın

中文 交替拧紧

한국어 번갈아 가며 조이십시오.

日本語 交互に締め付けてください。

ไทย ชั้้นในแบบสลับ

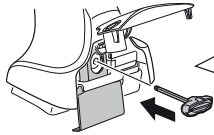
6



480R/754



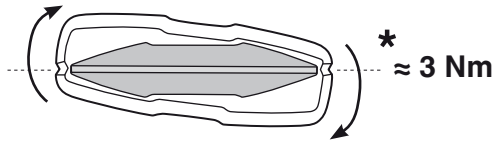
480



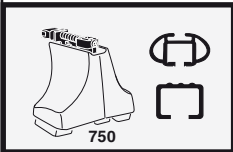
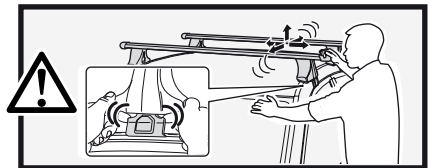
*
3 Nm



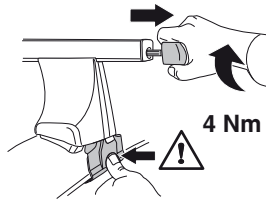
*



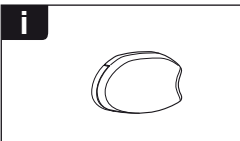
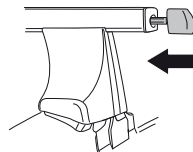
*
≈ 3 Nm



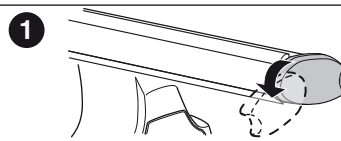
750



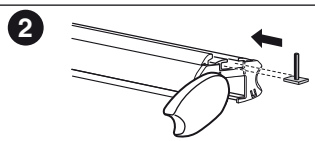
4 Nm



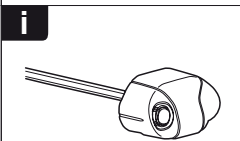
i



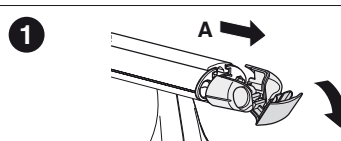
1



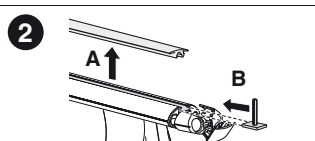
2



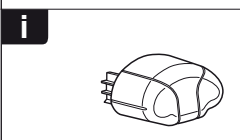
i



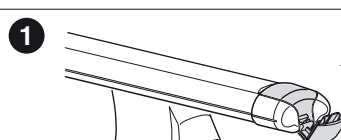
1



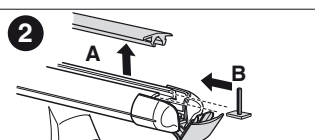
2



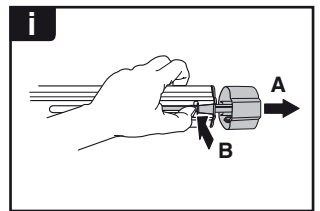
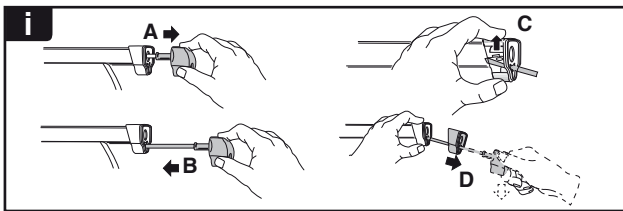
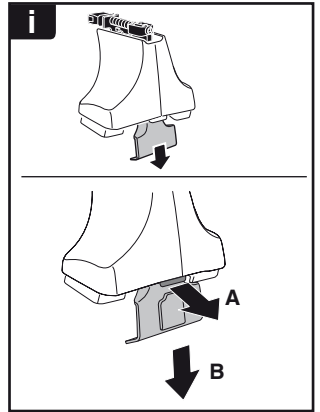
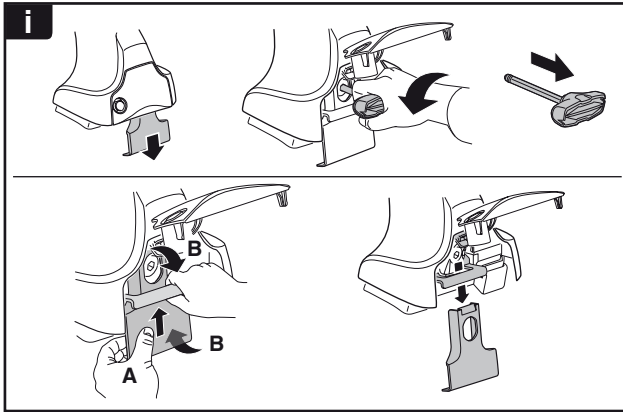
i



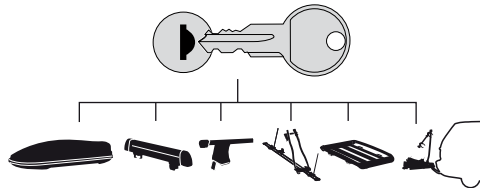
1



2



THULE
SWEDEN
**ONE
KEY
SYSTEM**



- 544 (x4)
- 596 (x6)
- 588 (x8)
- NA 510 (x10)
- EUR 452 (x12)
- ASIA



WW ▶ Thule Sweden AB, Box 69, 330 33 Hillerstorp, SWEDEN
 NA ▶ Thule Inc., 42 Silvermine Road, Seymour, Connecticut 06483, USA

info@thule.com
 customer.service@thule.com

www.thule.com