

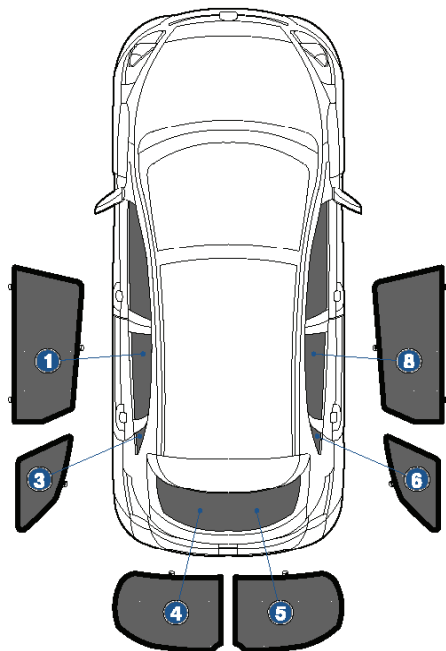
# Installation Manual

HYUNDAI I30 WAGON  
HYU-I30-E-B



## COMPONENTS INCLUDED

## SHADES



1+8



3+6



4+5

## FIXING CLIPS



CL-M02 x 2



CL-M12 x 4



CL-M13 x 4



CL-M14 x 1

# Side Shade Installation

HYUNDAI I30 WAGON

HYU-I30-E-B

COMPONENTS NEEDED:



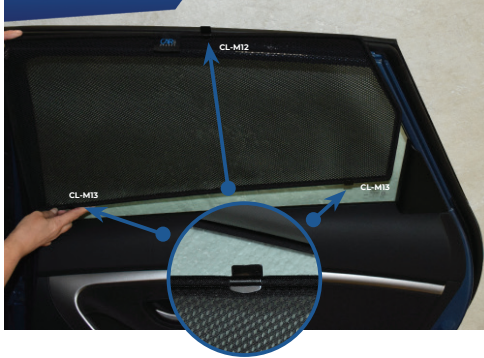
CL-M12 x 1



CL-M13 x 2

## STEP #1

ATTACH CLIPS ON SHADE EDGES



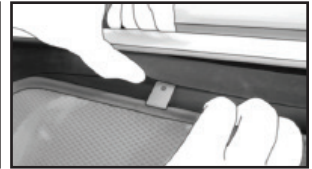
## STEP #2

POSITION THE SIDE SHADE



## STEP #3

INSERT CLIPS INSIDE WEATHERSTRIP



## STEP #4

ENSURE SECURELY FITTED IN PLACE



**CAR**  
SHADES

# Quarter Light Shade Installation

HYUNDAI I30 WAGON  
HYU-I30-E-B

COMPONENTS NEEDED:



## STEP #1

ATTACH CLIPS ON SHADE EDGES



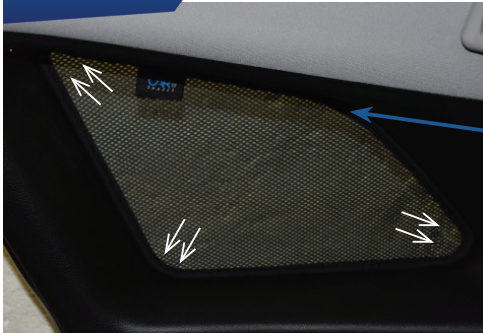
## STEP #2

INSERT CLIPS BEHIND INTERIOR TRIM



## STEP #3

ENSURE SECURELY FITTED IN PLACE



**CAR**  
SHADES



# Rear Shade Installation

HYUNDAI I30 WAGON  
HYU-I30-E-B

COMPONENTS NEEDED:



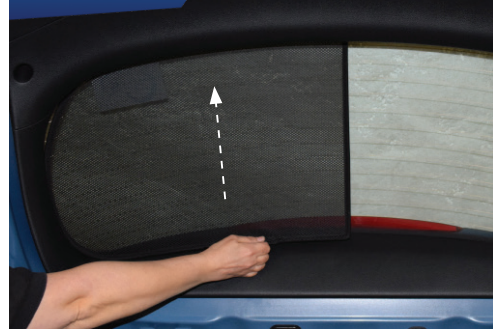
## STEP #1

ATTACH CLIPS ON SHADE EDGES



## STEP #2

POSITION THE REAR SHADE



## STEP #3

INSERT CLIPS BEHIND INTERIOR TRIM



## STEP #4

REPEAT THE PROCESS ON OTHER SHADE



## STEP #5

ENSURE SECURELY FITTED IN PLACE



**CAR**  
SHADES